



Immunohistochemical Classification of Hepatic Adenoma, A Single Center Experience

Bitá Geramizadeh^{1,2,*}, Zahra Memar³ and Seyedali Malekhosseini³

¹Department of Pathology, Medical School of Shiraz University, Shiraz University of Medical Sciences, Shiraz, Iran

²Transplant Research Center, Shiraz University of Medical Sciences, Shiraz, Iran

³Shiraz University of Medical Sciences, Shiraz, Iran

*Corresponding author: Department of Pathology, Medical School of Shiraz University, Shiraz University of Medical Sciences, Shiraz, Iran. Email: geramib@gmail.com

Received 2019 March 17; Revised 2019 June 15; Accepted 2019 June 17.

Abstract

Objectives: Hepatocellular adenoma (HCA) is a tumor with heterogenous molecular pathogenesis and varying malignant potential. Subclassification of HCAs is one of the important issues for the management decision to perform surgery or to follow up the patient. Iran is in intermediate status regarding the incidence of hepatocellular carcinoma, and on the other hand, incidence of viral precursors especially hepatitis B is decreasing, so it can be important to know the frequency of premalignant subtypes of liver cell adenomas in Iran.

Methods: During the study period (10 years from 2008 to 2018) 40 cases of HCA (35 female and 5 males) were retrieved from the archives of the pathology departments of the affiliated hospitals of Shiraz University of Medical Sciences. The diagnosis was confirmed and the best paraffin block was used for IHC staining for liver fatty acid binding protein (LFABP), glutamine synthetase (GS), β -catenin and serum amyloid A (SAA). Histologic findings were also recorded. In the mean time, clinical charts of the patients were reviewed and clinicopathologic findings were compared.

Results: The most common subtype in our cases was hepatocyte nuclear factor-1 α inactivated and the least common was β -catenin activated subtype. We didn't find any cases of mixed subtype. Inflammatory subtype was seen in 10% of the cases. Another 10% of our cases were unclassified because all of the IHC markers were negative.

Conclusions: Our results confirmed that immunohistochemistry should be routinely performed to subclassify HCAs. We also showed that frequencies of subtypes differ according to the studied population. For our population (Middle East or west Asia) HCAs with malignant potential are the least common.

Keywords: Liver Cell Adenoma, Immunohistochemistry, Classification

1. Background

Hepatocellular adenoma (HCA) is a benign hepatic tumor, with a high incidence in women of child bearing age. This tumor has different risk factors such as history of oral contraceptive drug (OCP) and androgen use, obesity, diabetes and glycogen storage disease (1). In the past, HCA used to be considered as a completely benign tumor with no malignant potential; however, it has now been proved that HCAs are heterogeneous regarding complications such as malignant potential and hemorrhage. In some subtypes, there is a 4% - 8% risk of malignant transformation and in others there is high risk of hemorrhage. According to the WHO (World health organization) classification of liver tumors (2010), HCAs are classified into 4 subtypes with different molecular pathogeneses (2).

These four most popular and accepted subtypes are as below (3):

1- Hepatocyte nuclear factor-1 α (HNF1 α) inactivated type, which is called H-HCA. These HCAs are negative for liver fatty acid binding protein (LFABP).

2- β -catenin activated type, which is called b-HCA. These cases show positive nuclear β -catenin or/and positive glutamine synthetase. Some of these cases show mutation in exon 3 with strong Wnt pathway activation and rare forms show mutation in exon 7 and 8 with weak Wnt pathway activation.

3- Inflammatory type which is called I-HCA. These are positive for CRP (C-reactive protein) or/and serum amyloid A (SAA).

4- Unclassified (U-HCA). These are cases which can not be categorized in the abovementioned 3 subtypes. Recently in some of the cases of this subtype activation of the sonic hedgehog pathway has been demonstrated (4).

2. Objectives

To the best of our knowledge, there has been no study about HCA and its subtypes from Iran and also this classification has rarely been studied in other Asian countries, so in this study we tried to evaluate different subtypes of 40 cases of HCA during 10 years (2008-2018) in the largest hepatobiliary referral center in the south of Iran.

3. Methods

In this cross-sectional study, during 10 years (2008 - 2018), we extracted all (40) cases with the pathologic diagnosis of hepatocellular adenoma from the archives of pathology department in the affiliated hospitals of Shiraz University of medical Sciences.

All the pathology slides were reviewed by two pathologists (BG&ZM), the diagnosis was confirmed and histopathologic findings were recorded. In the meantime, the best Hematoxylin & Eosin (H&E) slide was selected to extract the related paraffin block and to perform immunohistochemistry (IHC) on a freshly cut slide. Among the abovementioned 40 cases, 15 specimens were tumor resected tissue by surgery and 25 cases were needle biopsies.

We also evaluated the clinical charts of the patients to find out about the main clinical findings, such as drug history (mainly OCP and steroid androgens), obesity and diabetes mellitus (DM).

In this study we evaluated 4 IHC markers i.e. LFABP, β -catenin, Serum amyloid A (SAA), and glutamine synthetase (GS) which are the most recommended IHC markers in the very recent literature (1). Table 1 shows the characteristics of the antibodies and the methodology for IHC staining.

4. Results

A total of 40 HCA cases (15 resections and 25 biopsies) were included in this study (male = 5, female = 35, mean age 33 ± 17 years).

Fifteen patients (37.5%) had multiple adenomas. The average size of HCA was 8.6 ± 6.8 cm (range: 2 - 17 cm).

Table 2 shows the details of clinicopathologic findings in these 40 cases. Among the female patients, use of oral contraceptives (OCP) for at least 6 months, was identified in 22 of 35 cases (63%) cases. One of 5 male patients (20%) reported anabolic steroid use (for the duration 2 years). Eight patients (20%) were diabetic. It's worth mentioning that 7 patients with diabetes also had the history of OCP usage. There were 3 patients with a body mass index (BMI) more than 25.

We identified one case of glycogen storage disease in a 3-year old child with HCA.

By applying the IHC criteria (2, 3), we identified 4 (10%) b-HCA, 8 (20%) I-HCA and 20 (50%) H-HCA and 8 cases (20%) were negative for β -catenin, GS, SAA, and LFABP, and therefore were unclassifiable (U-HCA) (Tables 2 and 3).

Main histopathologic findings were inflammation in 9 cases (22.5%), hemorrhage in 10 cases (25%), steatosis in 20 cases (50%), acinar transformation in 2 cases (5%) and atypia in 4 cases (10%). Inflammation and hemorrhage were seen together in 2 cases. Steatosis and inflammation were seen together in 2 cases. All of the cases with atypia were β -catenin positive. Two of them were male, one with the history of androgen use and size of larger than 5 cm (Figures 1 - 4).

All of the 20 cases of H-HCA showed steatosis, one of which was also inflamed. In eight cases of I-HCA, 7 cases showed inflammation, in one of which inflammation was associated with steatosis and two with hemorrhage. Three cases showed hemorrhage, two of which were associated with inflammation. In U-HCA cases, 7 showed hemorrhage and one showed inflammation.

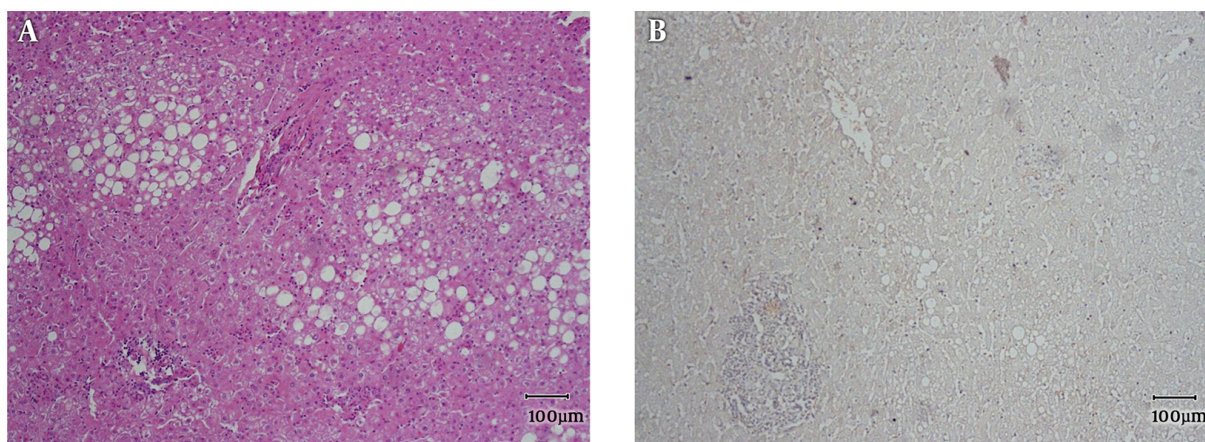
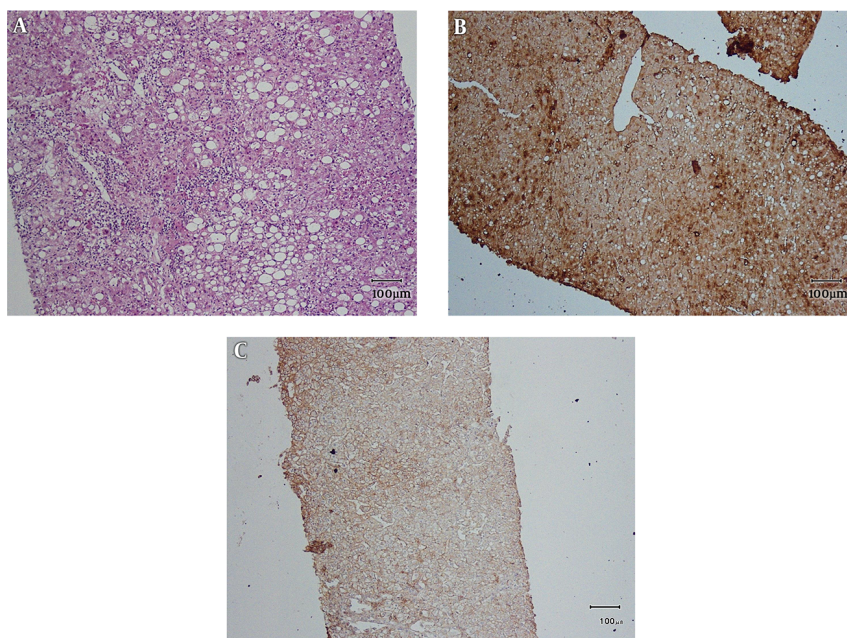
5. Discussion

HCA shows variable pathophysiologic pathways of development which contributes to different prognoses and varying malignant potential (1). This is because of different molecular and immunohistochemical characteristics, which result in different management protocols. According to WHO, varying protein expression and also histomorphologic findings determine malignant potential and prognosis of these tumors (2). In some studies immunohistochemistry has been the base of classification and in some others, molecular methods have been used to classify HCA (4-16). Another possible reason for the different results in the frequencies has been because of the variety of geographic regions and ethnic population of the studies. The most important point to classify HCAs according to their molecular and immunohistochemical findings is to separate those with malignant potential to perform special procedures. However, as Table 4 shows there have been many controversial reports about the percentage of β -catenin mutated HCAs. Studies from the USA report the results of b-HCA from zero (2) to 15.4% (14) which can be secondary to variable ethnicity in this country. Studies from Japan are more consistent and two reported studies have had similar results around 15% (12, 13). There has not been any report from Iran about the molecular and immunohistochemical classification of HCA. We decided to report our experience about HCA and immunohistochemical classification from our center as the largest referral hepatobiliary center in the south of country.

As Tables 2 and 3 show, the most common subtype of HCA in our center has been type I or H-HCA. About half of

Table 1. Characteristics of the Antibodies Which Have Been Used in This Study for Classification of Liver Cell Adenomas

Antibody	Source	Clone	Antigen retrieval	Dilution	Company
Glutamine synthetase	Mouse	GS-6	Trypsin	1/100	Medysis
Serum amyloid A	Rabbit	EP335	Citrate	1/200	Medysis
Liver fatty acid binding protein	Mouse	F9	Citrate	1/200	Medysis
Beta-catenin	Mouse	14	Heat	1/200	Biocare

**Figure 1.** A, sections from HCA show steatosis and inflammation (H&EX250); B, Negative LFABP in a case of H-HCA (IHCX250)**Figure 2.** A, Sections from HCA show inflammation and steatosis; (H&EX250); B, Positive SAA in a case of I-HCA (IHCX250); C, Cytoplasmic β -catenin positivity in a case of I-HCA i.e. normal β -catenin (IHCX250).

the 40 cases showed negative LFABP which correlates with the presence of fat and classifies the tumor in the first cat-

Table 2. Clinicopathologic Characteristics of the 40 Cases with the Pathologic Diagnosis of Liver Cell Adenoma

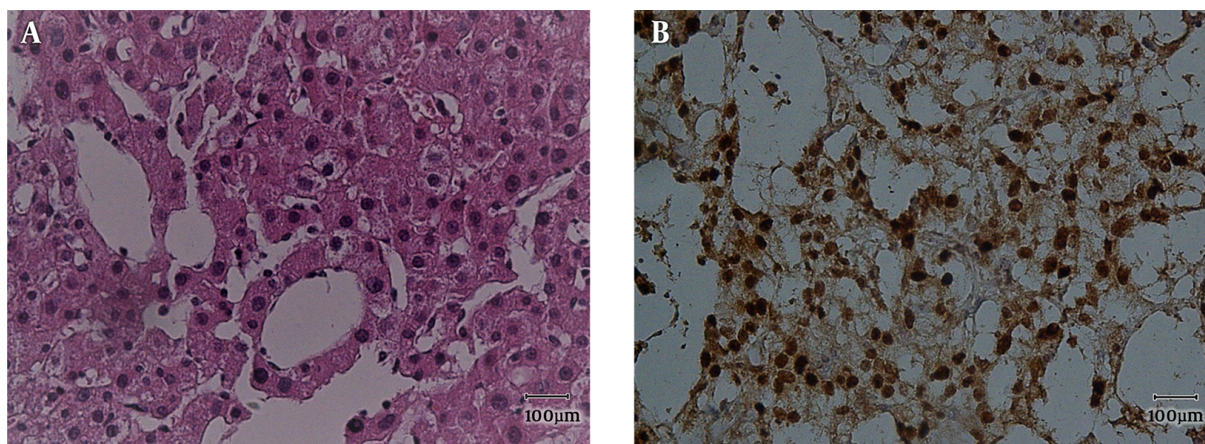
Case	Gender/Age, y	Size, largest/cm	Numbers	Additional Findings	Main Histologic Finding	Adenoma Subtype by IHC
1	F/30	2	1	OCP	Hemorrhage	U-HCA
2	F/33	13	2	OCP	Hemorrhage	I-HCA
3	F/32	10	1	-	Atypia and Acini	b-HCA
4	F/38	4	1	BMI > 25 kg/m ²	Steatosis	H-HCA
5	F/43	9	3	OCP and DM	Hemorrhage	U-HCA
6	F/26	4	1	-	Steatosis and inflammation	H-HCA
7	M/59	17	1	Androgen	Atypia and Acini	b-HCA
8	M/36	4.5	1	-	Steatosis	H-HCA
9	F/35	14	1	OCP	Steatosis	H-HCA
10	F/34	7	1	OCP and DM	Steatosis	H-HCA
11	F/33	4	1	OCP	Steatosis	H-HCA
12	F/28	2.5	1	OCP	Steatosis and inflammation	I-HCA
13	F/19	4	2	-	Inflammation	U-HCA
14	F/38	14	4	OCP	Steatosis	H-HCA
15	F/43	4	2	OCP	Steatosis	H-HCA
16	F/40	13	2	OCP and DM	Steatosis	H-HCA
17	F/28	4	1	OCP and BMI > 25 kg/m ²	Steatosis	H-HCA
18	F/31	10	1	OCP	Hemorrhage	U-HCA
19	F/35	11	1	OCP	Steatosis	H-HCA
20	F/42	10	1	OCP	Steatosis	H-HCA
21	F/37	16	2	OCP	Steatosis	H-HCA
22	F/48	4	2	OCP	Steatosis	H-HCA
23	F/19	6	2	-	Hemorrhage	U-HCA
24	M/17	2	1	-	Steatosis	H-HCA
25	F/53	15	2	OCP and DM	Inflammation and Hemorrhage	I-HCA
26	F/39	9	1	OCP and DM	Steatosis	H-HCA
27	F/40	10	1	OCP and DM	Atypia	b-HCA
28	F/26	6	3	hemorrhage	Hemorrhage	U-HCA
29	F/37	9	1	OCP and DM	Steatosis	H-HCA
30	F/42	2	1	-	Steatosis	H-HCA
31	F/19	6	2	DM and BMI > 25 kg/m ²	Hemorrhage	U-HCA
32	F/36	6	1	OCP	Inflammation	I-HCA
33	F/16	6	2	-	Inflammation	I-HCA
34	F/37	9	1	OCP	Inflammation	I-HCA
35	M/30	3	1	-	Steatosis	H-HCA
36	M/17	11	1	-	Atypia	b-HCA
37	F/3	6	2	GSD	Inflammation and Hemorrhage	I-HCA
38	F/16	6	1	-	Steatosis	H-HCA
39	F/9	5	1	-	Inflammation	I-HCA
40	F/63	4	3	-	Hemorrhage	U-HCA

Abbreviations: BMI, body mass index; b-HCA: β -catenin mutated hepatocellular adenoma; DM, diabetes Mellitus; GSD, glycogen storage disease; H-HCA, hepatocyte nuclear factor mutated hepatocellular adenoma; I-HCA, inflammatory hepatocellular adenoma; OCP, Oral contraceptive pill; U-HCA, unclassified hepatocellular adenoma.

Table 3. Immunohistochemical Findings and Subtyping of the 40 Cases of Liver Cell Adenoma

	Glutamine Synthetase	β -Catenin	Serum Amyloid A	Liver Fatty Acid Binding Protein	No. (%)
H-HCA	-	-	-	-	20 (50)
I-HCA	-	-	+	+	8(20)
b-HCA	+	+	-	+	4(10)
U-HCA	-	-	-	+	8(20)

Abbreviations: b-HCA: β -catenin mutated hepatocellular adenoma; H-HCA, hepatocyte nuclear factor mutated hepatocellular adenoma; I-HCA, inflammatory hepatocellular adenoma; U-HCA, unclassified hepatocellular adenoma.

**Figure 3.** A, Sections from HCA show cellular atypia. (H&EX250); B, Nuclear positivity of β -catenin in a case of b-HCA. (IHCX250)**Table 4.** Comparison of the Frequencies of Different Subtypes of HCA from Different Geographic Areas of the World^a

Study	Year	HCA Subtypes				
		H-HCA	I-HCA	b-HCA	U-HCA	I-HCA + b-HCA
Japan (12)	2011	15.4	38.6	15.4	30.6	-
Japan (13)	2012	15	38	15	32	-
USA (2)	2014	29	32	0	36	36
USA (14)	2016	34.6	42.3	15.4	7.7	-
USA (15)	2017	0	34.8	8.7	15.2	41.3
France (4)	2017	33	39	19	0	10
Australia (16)	2018	7	50	14	28	-
Iran	Current study	50	20	10	20	-

Abbreviations: b-HCA: β -catenin mutated hepatocellular adenoma; H-HCA, hepatocyte nuclear factor mutated hepatocellular adenoma; I-HCA, inflammatory hepatocellular adenoma; U-HCA, unclassified hepatocellular adenoma.

^aValues are expressed as percentage.

egory. The least common subtype in our study has been β -catenin mutated type which has the higher risk of malignancy. As Table 4 shows the reported frequencies from Japan, Australia, France and USA have been very different and, in some studies, mixed I-HCA and b-HCA has been very common (2, 15).

In most of the previous reports, the most common sub-

type has been inflammatory (I-HCA), but in our study the most common subtype has been H-HCA. It's the subtype which most commonly occurs in the patients with the history of OCP ingestion (1). In our study more than 50% of patients had the history of OCP use.

As mentioned above, Table 4 shows even studies from the same country reporting different frequencies. This

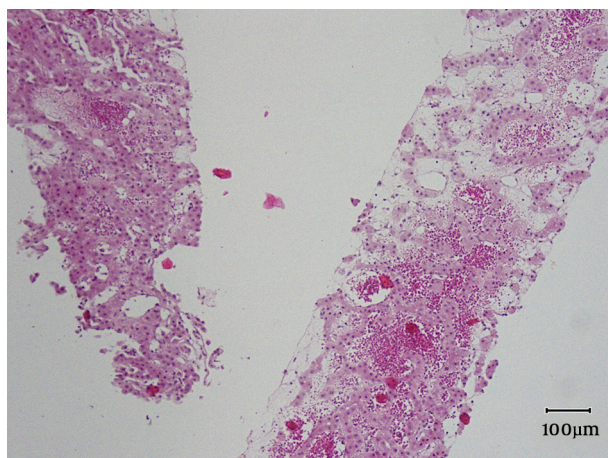


Figure 4. Sections from HCA show sinusoidal dilatation and hemorrhage in a case of U-HCA. All of the IHC markers were negative (IHCX250).

means that the issue is evolving and the difference in the frequencies is multifactorial, which emphasizes the importance of routine classification of the cases with the diagnosis of HCA (4, 12-17).

Management of HCAs is mostly based on the size (more than 5 cm) and the presence or absence of β -catenin mutation (1). Our population has been amongst the lowest number of the cases with β -catenin mutation (10%), and studies from USA have shown up to 50% HCAs with the mutation of β -catenin, either pure or mixed with inflammatory pathogenesis (15). In our cases, all of those with β -catenin activated HCAs (b-HCA) showed different degrees of cellular atypia with and without acinar transformation. There has also been different degrees of steatosis and inflammation in the cases of I-HCA and H-HCA. This finding correlates with previous reports, which have shown steatosis in all of the subtypes of HCA (6-9).

5.1. Conclusions

HCA should be considered as a heterogenous tumor in the diagnosis of which IHC subclassification should be part of routine practice. Frequencies of different subtypes are completely different in different populations. Histologic findings are informative but not adequate for subclassification of HCA. Further cohort studies are necessary for definite evaluation of the role of IHC study in subclassification and long-term prognosis of HCA.

Acknowledgments

This project has been performed under the project number 11957, supported by Shiraz University of Medical Sciences.

Footnotes

Authors' Contribution: Bita Geramizadeh: The idea of the project, designing the project, looking at slides and diagnosis, writing the paper; Zahra Memar: Collecting the cases, helping in IHC, Analysis of data; Seyedali Malekhosseini: Surgery.

Conflict of Interests: The authors declare no conflict of interest.

Ethical Considerations: It is not declared by the authors.

Funding/Support: It has been funded by Shiraz University of Medical Sciences (project number: 11957).

References

1. Torbenson M. Hepatic adenomas: Classification, controversies, and consensus. *Surg Pathol Clin.* 2018;**11**(2):351-66. doi: [10.1016/j.path.2018.02.007](https://doi.org/10.1016/j.path.2018.02.007). [PubMed: 29751879].
2. Kondo F, Fukusato T, Kudo M. Pathological diagnosis of benign hepatocellular nodular lesions based on the new World Health Organization classification. *Oncology.* 2014;**87** Suppl 1:37-49. doi: [10.1159/000368144](https://doi.org/10.1159/000368144). [PubMed: 25427732].
3. Vedio AL, Sutter O, Ziol M, Nault JC. Molecular classification of hepatocellular adenomas: Impact on clinical practice. *Hepat Oncol.* 2018;**5**(1):HEP04. doi: [10.2217/hep-2017-0023](https://doi.org/10.2217/hep-2017-0023). [PubMed: 30302195]. [PubMed Central: PMC6168043].
4. Nault JC, Paradis V, Cherqui D, Vilgrain V, Zucman-Rossi J. Molecular classification of hepatocellular adenoma in clinical practice. *J Hepatol.* 2017;**67**(5):1074-83. doi: [10.1016/j.jhep.2017.07.009](https://doi.org/10.1016/j.jhep.2017.07.009). [PubMed: 28733222].
5. Bioulac-Sage P, Balabaud C, Zucman-Rossi J. Will the pathomolecular classification of hepatocellular adenomas improve their clinical management? *J Hepatol.* 2011;**55**(1):8-10. doi: [10.1016/j.jhep.2011.01.016](https://doi.org/10.1016/j.jhep.2011.01.016). [PubMed: 21300118].
6. Szor DJ, Ursoline M, Herman P. Hepatic adenoma. *Arq Bras Cir Dig.* 2013;**26**(3):219-22. doi: [10.1590/S0102-67202013000300012](https://doi.org/10.1590/S0102-67202013000300012). [PubMed: 24190381].
7. Nault JC, Bioulac-Sage P, Zucman-Rossi J. Hepatocellular benign tumors-from molecular classification to personalized clinical care. *Gastroenterology.* 2013;**144**(5):888-902. doi: [10.1053/j.gastro.2013.02.032](https://doi.org/10.1053/j.gastro.2013.02.032). [PubMed: 23485860].
8. Dhingra S, Fiel MI. Update on the new classification of hepatic adenomas: clinical, molecular, and pathologic characteristics. *Arch Pathol Lab Med.* 2014;**138**(8):1090-7. doi: [10.5858/arpa.2013-0183-RA](https://doi.org/10.5858/arpa.2013-0183-RA). [PubMed: 25076298].
9. Agrawal S, Agarwal S, Arnason T, Saini S, Belghiti J. Management of hepatocellular adenoma: Recent advances. *Clin Gastroenterol Hepatol.* 2015;**13**(7):1221-30. doi: [10.1016/j.cgh.2014.05.023](https://doi.org/10.1016/j.cgh.2014.05.023). [PubMed: 24909909].
10. Bioulac-Sage P, Sempoux C, Balabaud C. Hepatocellular adenoma: Classification, variants and clinical relevance. *Semin Diagn Pathol.* 2017;**34**(2):112-25. doi: [10.1053/j.semmp.2016.12.007](https://doi.org/10.1053/j.semmp.2016.12.007). [PubMed: 28131467].
11. Terkivatan T, Ijzermans JN. Hepatocellular adenoma: Should phenotypic classification direct management? *Nat Rev Gastroenterol Hepatol.* 2009;**6**(12):697-8. doi: [10.1038/nrgastro.2009.199](https://doi.org/10.1038/nrgastro.2009.199). [PubMed: 19946304].
12. Sasaki M, Yoneda N, Kitamura S, Sato Y, Nakanuma Y. Characterization of hepatocellular adenoma based on the phenotypic classification: The Kanazawa experience. *Hepatol Res.* 2011;**41**(10):982-8. doi: [10.1111/j.1872-034X.2011.00851.x](https://doi.org/10.1111/j.1872-034X.2011.00851.x). [PubMed: 21883740].

13. Sasaki M, Nakanuma Y. Overview of hepatocellular adenoma in Japan. *Int J Hepatol.* 2012;**2012**:648131. doi: [10.1155/2012/648131](https://doi.org/10.1155/2012/648131). [PubMed: [22973519](https://pubmed.ncbi.nlm.nih.gov/22973519/)]. [PubMed Central: [PMC3438775](https://pubmed.ncbi.nlm.nih.gov/PMC3438775/)].
14. Margolskee E, Bao F, de Gonzalez AK, Moreira RK, Lagana S, Sireci AN, et al. Hepatocellular adenoma classification: A comparative evaluation of immunohistochemistry and targeted mutational analysis. *Diagn Pathol.* 2016;**11**:27. doi: [10.1186/s13000-016-0475-5](https://doi.org/10.1186/s13000-016-0475-5). [PubMed: [26961851](https://pubmed.ncbi.nlm.nih.gov/26961851/)]. [PubMed Central: [PMC4784347](https://pubmed.ncbi.nlm.nih.gov/PMC4784347/)].
15. Larson BK, Guindi M. A limited immunohistochemical panel can subtype hepatocellular adenomas for routine practice. *Am J Clin Pathol.* 2017;**147**(6):557-70. doi: [10.1093/ajcp/aqx010](https://doi.org/10.1093/ajcp/aqx010). [PubMed: [28472207](https://pubmed.ncbi.nlm.nih.gov/28472207/)].
16. Miller GC, Campbell CM, Manoharan B, Bryant R, Cavallucci D, O'Rourke N, et al. Subclassification of hepatocellular adenomas: Practical considerations in the implementation of the Bordeaux criteria. *Pathology.* 2018;**50**(6):593-9. doi: [10.1016/j.pathol.2018.05.003](https://doi.org/10.1016/j.pathol.2018.05.003). [PubMed: [30149989](https://pubmed.ncbi.nlm.nih.gov/30149989/)].
17. Nault JC, Couchy G, Balabaud C, Morcrette G, Caruso S, Blanc JF, et al. Molecular classification of hepatocellular adenoma associates with risk factors, bleeding, and malignant transformation. *Gastroenterology.* 2017;**152**(4):880-894 e6. doi: [10.1053/j.gastro.2016.11.042](https://doi.org/10.1053/j.gastro.2016.11.042). [PubMed: [27939373](https://pubmed.ncbi.nlm.nih.gov/27939373/)].