

Supplementary Materials for
***In-vitro* Studies of Anti-EGFR Tyrosine Kinase Activity of Thai nutraceutical
Plants**

Suwanna Semsri, Chanyatorn seatew, Siriluk Rattanabunyong, Sirigade Ruekit, Natharinee
Horata^a, Aussara Panya, Pa-thai Yenchitsomanus , Orathai Sawatdichaikul* and Kiattawee
Choowongkomon*

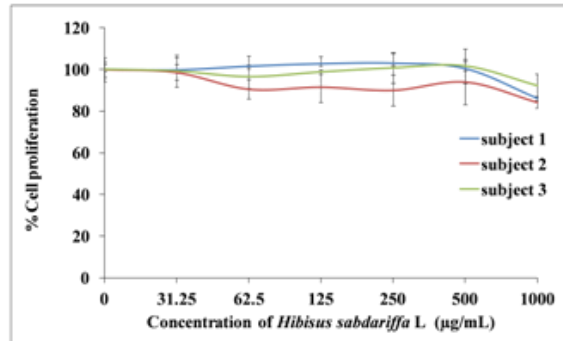
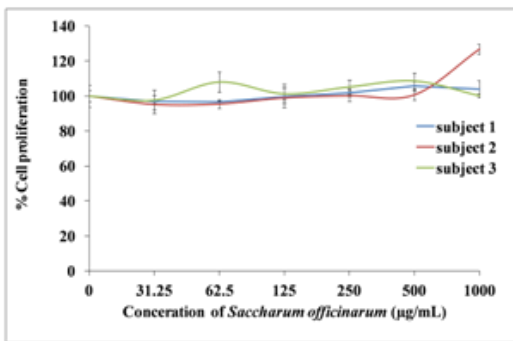
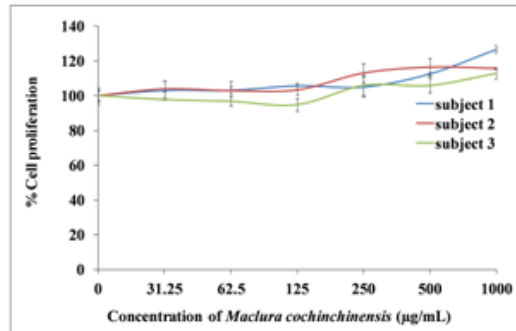
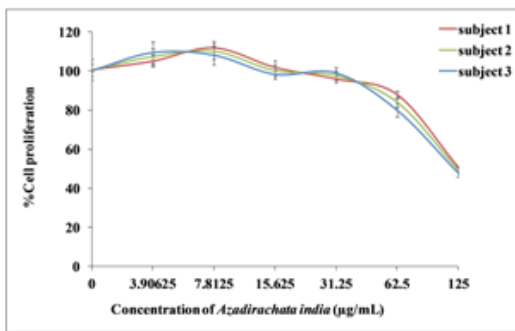
*To whom correspondence should be addressed

ifrots@ku.ac.th , fsciktc@ku.ac.th

Volume 19, Issue 2 (Spring 2020)

This PDF file include

Figure s1



Supplementary Figure 1 The cytotoxicity of four herb extracts on PBMC was detected by MTT