

# Comparison of Quantitative Assessment of BLADE and Isotropic Three-Dimensional Fast Spin Echo Cube (3D T2 SPACE) Sequences with Conventional Protocols of wrist Joint at 3 Tesla Magnetic Resonance Imaging

Hamed Naghibi,<sup>1</sup> Hedayatolah Soroush,<sup>2</sup> Fariborz Faeghi,<sup>3,\*</sup> Madjid Shakiba,<sup>2</sup> Amir Reza Farhoud,<sup>4</sup>

and Hassan Hashemi<sup>2</sup>

<sup>1</sup>School of Allied Medical Sciences, Shahid Beheshti University of Medical Sciences, Tehran, Iran

<sup>2</sup>Advanced Diagnostic and Interventional Radiology Research Center (ADIR), Tehran University of Medical Sciences, Tehran, Iran

<sup>3</sup>Radiology Technology Department, School of Allied Medical Sciences, Shahid Beheshti University of Medical Sciences, Tehran, Iran

<sup>4</sup>Department of Orthopedics, Imam Hospital Complex, Tehran University of Medical Sciences (TUMS), Tehran, Iran

\*Corresponding author: Fariborz Faeghi, Radiology Technology Department, School of Allied Medical Sciences, Shahid Beheshti University of Medical Sciences, Tehran, Iran, E-mail: f\_faeghi@sbmu.ac.ir

Received 2016 February 27; Revised 2016 April 30; Accepted 2016 May 01.

## Abstract

**Background:** Magnetic resonance imaging (MRI) of the wrist joint is a useful method in the diagnosis of triangular fibrocartilage complex (TFCC), ligaments and tendons, peripheral nerves, cartilage and carpal tunnel syndrome. However, the evaluation of these small anatomical structures is a topic of investigation. In some instances, the diagnostic indices of MRI in tears and other lesions of cartilage and ligamentous structures are relatively low, so the protocols should be optimized.

**Objectives:** In this study, we aim to compare new MRI protocols of 3D T2SPACE, PD BLADE and T2 BLADE with the conventional protocols, including T2 FSE, PD FSE, and T1 FSE in case of signal intensity.

**Patients and Methods:** Twenty patients with a history of wrist trauma or suspected wrist lesions were referred by orthopedic hand surgeons and enrolled into the study. All the protocols were carried out on all patients and the images were assessed quantitatively by measurement of signal to noise ratio (SNR) and contrast to noise ratio (CNR). Then, these parameters were compared between different protocols. SPSS ver.18 was used for the statistical analyses.

**Results:** SNR of the cartilage, TFCC on 3D T2SPACE and T1 FSE was better than other sequences ( $P < 0.001$ ). SNR of the bone on PD BLADE was significantly higher ( $P < 0.001$ ) than that of conventional protocols. PD BLADE images showed significantly higher bone-cartilage CNR and bone-TFCC CNR ( $P < 0.001$  to  $P < 0.001$ ). CNR of cartilage-TFCC on T1 FSE was better than other sequences, but no significant statistical differences were seen.

**Conclusion:** High-resolution MR images of the wrist using 3D T2SPACE, PD BLADE and T2 BLADE were superior to those using conventional sequences quantitatively. High-SNR and CNR MR imaging with SPACE and BLADE would be a promising method to diagnose wrist lesions.

**Keywords:** MRI, Wrist, 3D SPACE, BLADE, TFCC, 3Tesla

## 1. Background

In recent years, magnetic resonance imaging (MRI) of the wrist joint for evaluation of its pathologies has been developed. In this imaging modality, depiction of disorders such as ligamentous and tendon injuries, osteonecrosis, osteoarthritis, and synovial effusion is quite possible. The resolution and contrast of MR images are better for visualization of the anatomical structure of the wrist joint in comparison with the other imaging modalities. In addition, its role in the diagnosis of neoplastic, infective, carpal tunnel syndrome (CTS), and triangular fibrocartilage complex (TFCC) disorders has been shown (1).

In previous studies, the important role of MRI in the diagnosis of TFCC lesions has been approved. For many years, visualization of TFCC lesions, arthrography was done which was both invasive and expensive and its application was limited to some special cases. However, it is suggested to utilize the new MRI pulse sequences or the optimized routine ones for diagnosis of TFCC and wrist lesions (2).

TFCC is the most frequent lesion of the wrist joint with non-specific clinical findings. All kinds of distal radial and ulnar fracture and dislocations are able to make injuries and tearing of TFCC. Studies show that TFCC lesions are also important in the evaluation of wrist pain. So, the imaging method is important for both radiologists and orthopedic

surgeons in order to visualize the TFCC lesion. However, the complicated and smaller structures like ligaments and TFCC are under investigation (3).

## 2. Objectives

In this study, we used T2BLADE, PD BLADE, and 3D T2SPACE pulse sequences in the MRI of the wrist joint, especially for TFCC and we compared it to the current pulse sequences quantitative analysis. These MRI protocols were selected because there are some pulsation and motion artifacts in the wrist area. BLADE and SPACE may eliminate them. Therefore, the signal to noise ratio (SNR) and contrast to noise ratio (CNR) would probably increase and visualization of the anatomical structures of the wrist including TFCC may improve.

## 3. Patients and Methods

### 3.1. Study Subjects

Our study was done in Imam Khomeini hospital. 3 Tesla-Trio-Siemense MRI machine and circular 3 inches coil was used. In this cross sectional study, twenty patients with a history of wrist trauma or suspected wrist lesions were referred by orthopedic hand surgeons. Ten men and ten women in the age range of 22 to 40 years (mean, 28 years) were enrolled. All patients were imaged in prone position while their wrist was at the center of the magnet (isocenter) and the wrist area was covered by coil and the other upper limb was parallel to the body. The list of used pulse sequences are shown in Table 1. All sequences were performed in coronal section with a fixed Field of view (FOV). Parallel imaging was not utilized in the sequences.

### 3.2. Quantitative Analysis

In quantitative analysis, two criteria including SNR and CNR were used to compare all pulse sequences. In each sequence, SNR was earned by locating the region of interest (ROI) on lunate (center of bone), TFCC and cartilage (between radius and ulna) and another ROI beyond the anatomical area on the air outside the wrist, to calculate the air standard deviation (Figure 1).

The size of ROI and the section of study was fixed in all the sequences.

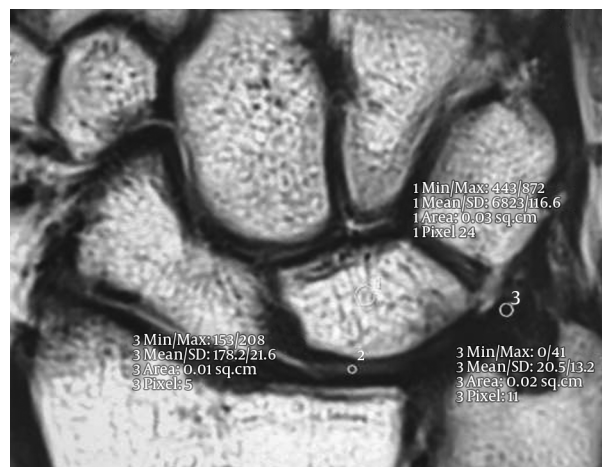
Size of ROI for lunate: 3 mm<sup>2</sup>;

Size of ROI for TFCC: 2 mm<sup>2</sup>;

Size of ROI for cartilage: 1 mm<sup>2</sup>.

SNR was calculated by the following Formula 1:

$$SNR = \frac{SI}{N} \quad (1)$$



**Figure 1.** 2D T2BLADE MR image demonstrating examples of region of interest (ROI) on the disc of the triangular fibrocartilage complex (TFCC)

SI = signal intensity; N = standard deviation.

CNR was calculated by subtracting the average signal intensity of two areas divided by air standard deviation based on the following Formula 2-4

$$CNR_{BC} = \frac{SI_B - SI_C}{N} \quad (2)$$

$$CNR_{BT} = \frac{SI_B - SI_T}{N} \quad (3)$$

$$CNR_{CT} = \frac{SI_C - SI_T}{N} \quad (4)$$

C = cartilage; B = bone; T = TFCC.

### 3.3. Data Analysis Method

Normality of all variables was evaluated by using Kolmogorov-Smirnov test. If the data were normally distributed, comparison of CNR and SNR between different sequences was accomplished by repeated measure ANOVA. Post hoc comparison between different groups was done after Bonferroni correction. If the data were not normally distributed, the Friedman test was used for comparison of the variables between different groups. We assessed twenty patients in different protocols twice in a 14-day time period. Then we assessed intra observer reliability by intraclass correlation coefficient. All coefficients were higher than 0.8. All P-values lower than 0.05 were considered as statistically significant. SPSS ver. 18 were used for statistical analysis (SPSS Inc. Released 2009. PASW Statistics for Windows, Version 18.0. Chicago, Ill, USA).

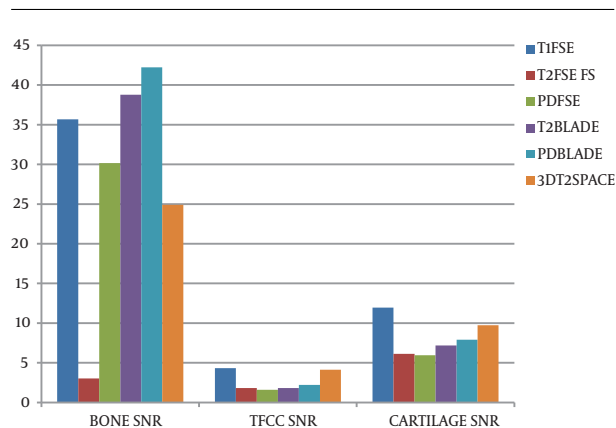
**Table 1.** Pulse Sequence Parameters

Pulse Sequence Parameters	T1FSE	T2 FSE FS	PDFSE	T2 BLADE	PDBLADE	3D T2 SPACE
Imaging Direction	Coronal	Coronal	Coronal	Coronal	Coronal	Coronal
TR (ms)	830	3000	3000	3500	3200	1000
TE (ms)	22	77	20	67	52	45
Flip Angle (degree)	150	150	150	160	160	120
Echo train length	3	18	10	16	13	215
field of view (mm)	100	100	100	120	120	120
Matrix	256 × 204	256 × 204	256 × 204	320 × 320	320 × 320	320 × 320
Section Thickness (mm)	3	3	3	3	3	0.6
Intersection Gap (mm)	0.3	0.3	0.3	0.3	0.3	0
Number of Sections	15	15	15	15	15	80
Band Width (Hz/pixel)	256	256	256	256	256	434
Number of Signal Acquisition	2	3	1	1	1	1.6
Phase Direction	L-R	L-R	L-R	F-H	F-H	F-H
Acquisition Time (S)	120	116	107	173	190	360

Abbreviations: 3D, three-dimensional; FSE, fast spin echo; TR, repetition time; TE, echo time; PD, proton density; SPACE, sampling perfection with application optimized contrast using different flip angle evolution.

#### 4. Results

The results of comparison of SNR in TFCC, cartilage and bone within all sequences are shown in [Figure 2](#).



**Figure 2.** Comparison of relative signal to noise ratio (SNR) bone, triangular fibrocartilage complex (TFCC), and cartilage of each sequence of MR wrist images

SNR of bone in PD BLADE in comparison with the other sequences was significant ( $P < 0.001$ ).

SNR of TFCC in T1 FSE and 3D T2SPACE in comparison with the other sequences was higher ( $P < 0.001$ ). SNR of cartilage in T1 FSE in comparison with the other sequences

was better ( $P < 0.001$ ).

Post hoc test for comparison of different MRI sequences were accomplished and the data are mentioned in [Table 2](#) and [3](#). The results of comparison between averages CNR, bone with TFCC, bone with cartilage, cartilage with TFCC are depicted in [Figure 3](#). Comparison of CNR between bone and TFCC shows that CNR in T2 BLADE and PD BLADE sequences are better in comparison with the other sequences ( $P < 0.001$ ). Evaluation of CNR between bone and cartilage in different sequences shows that there is a significant difference between PD BLADE and the other sequences, which shows that this sequence has higher CNR ( $P < 0.001$ ). CNR between cartilage and TFCC reiterated that T1 FSE in comparison with the other sequences has higher CNR, but the value of differences was clinically small ( $P < 0.001$ ).

#### 5. Discussion

MRI has been considered as the best imaging modality for wrist lesions due to its considerable contrast resolution and the ability to obtain images in every three anatomical planes. MRI has a higher sensitivity and specificity compared to other modalities. In recent studies, it is shown that higher magnetic field like 3T make it possible to obtain images with higher resolution and SNR with higher sensitivity and specificity (4).

**Table 2.** Comparison of Mean Signal to Noise Ratio (SNR), Contrast to Noise Ratio (CNR) in Different MRI Sequences<sup>a</sup>

Physical Parameters	Anatomical Location	Sequences	P value
SNR	Bone	G2 < [G1 = G3 = G4]	P < 0.001
		G2 < G5 < G6 [G3 = G4]	
	TFCC	[G2 = G3 = G4 = G6] < [G1 = G5]	P < 0.001
	Cartilage	[G2 = G3 = G4 = G6] < G1	P < 0.001
		G1 = G5	
		G2 < G5	
CNR	Bone, TFCC	G2 < G1	P < 0.001
		G2 < G3	
		G2 < G4	
		G2 < G5	
		G2 < G6	
		G3 = G4	
		G5 < G3	
		G5 < G4	
		G5 < G6	
		Bone, Cartilage	
	G2 < G3		
	G2 < G4		
	G2 < G5		
	G2 < G6		
	G5 < G3		
	G5 < G4		
	G5 < G6		
	Cartilage, TFCC	G4 < G1	P < 0.001

Abbreviations: TFCC, triangular fibrocartilage complex ;G, group.

<sup>a</sup>Group 1 = T1 FSE; Group 2 = T2 FSE FS; Group 3 = T2 BLADE; Group 4 = PD BLADE; Group 5 = 3D T2 SPACE; Group 6 = PD FSE.

The earned information of wrist MRI is quite necessary for the surgeon to manage patient treatment. Due to the small anatomical structures of the wrist joint, the diagnosis of lesions is a challenge. Some new sequences with higher resolution and SNR have been introduced (5).

In our study, we evaluated SNR and CNR of T2 BLADE, PD BLADE, and 3D T2SPACE in comparison with 2D FSE sequences.

BLADE and SPACE is in the same group as Fast spin echo, but they have differences in K-SPACE filling and pulse se-

quence characteristics such as the type and number of RF pulses with other routine FSE sequences.

In BLADE sequence, the K-SPACE is filled radially while filling of K-SPACE is linear. It causes more filling of central lines of K-SPACE and then SNR would increase and motion artifact would remarkably decrease.

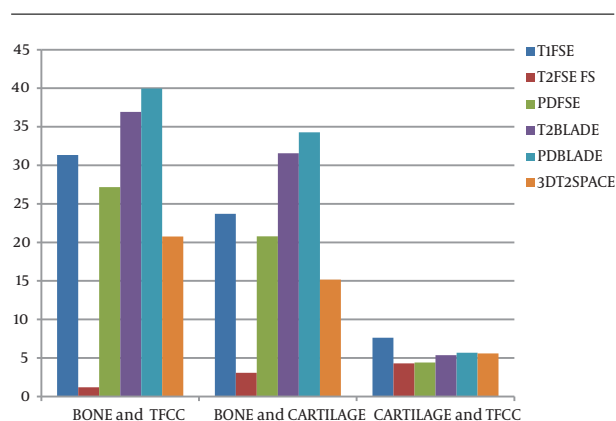
SPACE sequence uses different rotation angles and variable flip angles and limited T2 suppression (which is caused due to prolonged echo train length). Therefore, images with optimized contrast and uniform resolution and

**Table 3.** Average of Signal to Noise Ratio and Contrast to Noise Ratio in Different Sequences<sup>a</sup>

Physical Parameters	Anatomical Location	T1 FSE	T2 FSE FS	PD FSE	T2 BLADE	PD BLADE	3D T2 SPACE
SNR	Bone	35.66 ± 12.02	3.04 ± 2.29	30.16 ± 15.10	38.76 ± 14.30	42.21 ± 20.06	24.91 ± 13.35
	TFCC	4.32 ± 2.10	1.83 ± 1.69	1.60 ± 1.20	1.83 ± 1.41	2.23 ± 1.75	4.14 ± 2.77
	Cartilage	11.95 ± 3.90	6.14 ± 4.42	5.96 ± 3.70	7.19 ± 4.73	7.91 ± 4.74	9.73 ± 4.89
CNR	Bone, TFCC	31.34 ± 12.10	1.21 ± 1.48	27.18 ± 13.25	36.93 ± 13.20	39.97 ± 18.62	20.77 ± 10.9
	Bone, Cartilage	23.71 ± 11.29	3.09 ± 3.40	20.78 ± 11.32	31.57 ± 11.51	34.29 ± 17.50	15.17 ± 8.62
	Cartilage, TFCC	7.63 ± 2.67	4.31 ± 3.78	4.41 ± 2.65	5.36 ± 3.82	5.68 ± 4.38	5.59 ± 2.60

Abbreviations: TFCC, triangular fibrocartilage complex; SNR, signal to noise ratio; CNR, contrast to noise ratio; FSE, Fast Spin Echo; PD, proton density; FS, fat saturation; 3D, Threedimensional.

<sup>a</sup>Values are means ± standard deviations.



**Figure 3.** Comparison of relative contrast to noise ratio (CNR), bone and triangular fibrocartilage complex (TFCC), bone and cartilage, cartilage and TFCC of each sequence of MR wrist images

lower blurring artifact are produced.

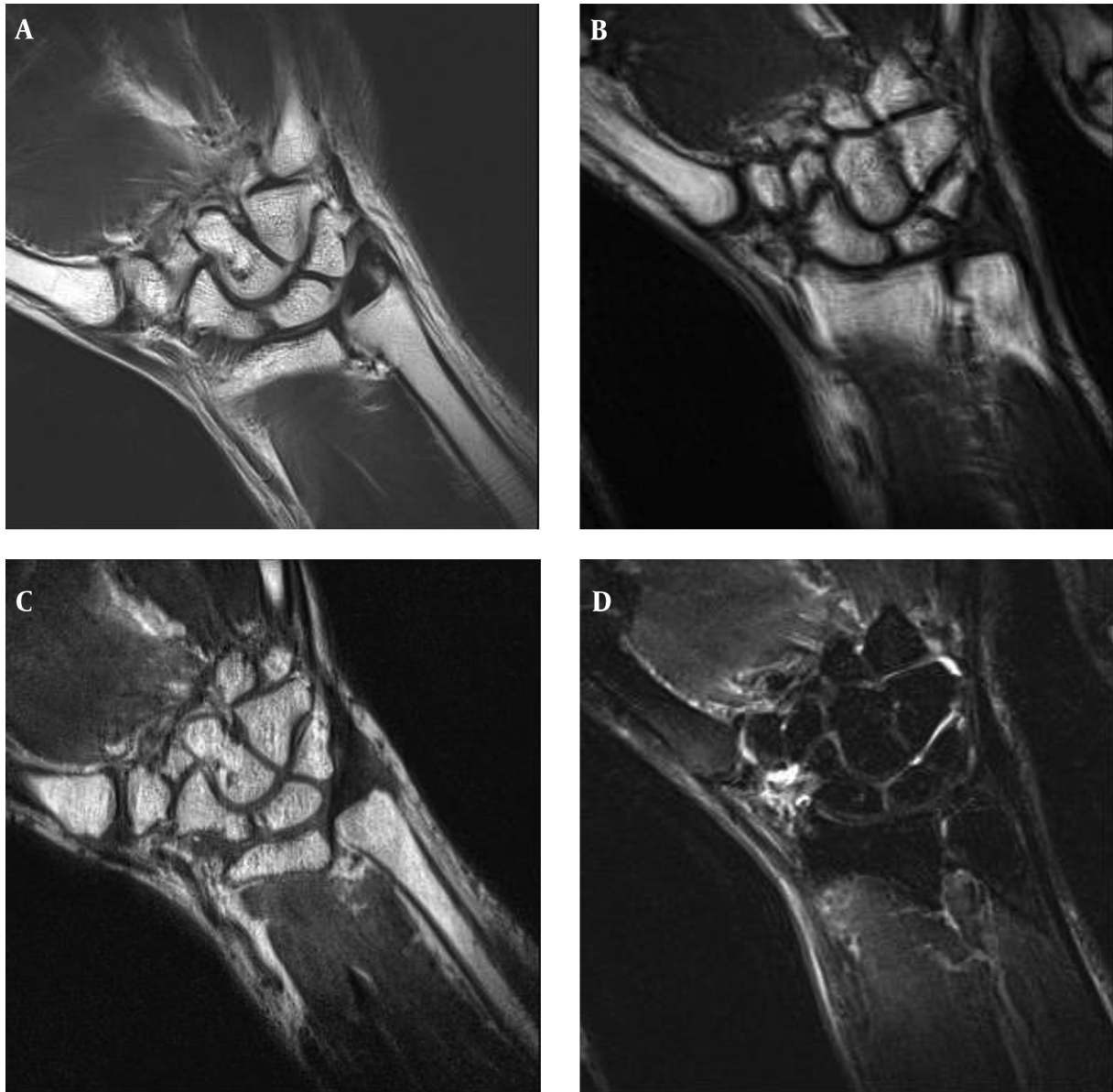
Our study shows that T2 BLADE and PD BLADE in comparison to FSE sequence would significantly produce images with remarkable lower motion artifact and improved image quality (Figure 4). SNR of nearly all cases was higher. Moreover, the study of CNR in different tissues (bone, cartilage, and TFCC) shows that CNR between bone-cartilage and bone-TFCC in T2 and PD BLADE was higher than FSE sequences.

Generally, in previous studies, the comparison of SNR and CNR in 2D and 3D images were different and controversial. In a previous study conducted by Lenk et al. (6), which was done on 2D, 3D MEDIC with a 3T MRI scanner shows that these sequences are suitable in the diagnosis of CTS and TFCC disorders (4). Another study carried out by Bittersohl et al. (7) suggested to use magnetic field of

higher than 1.5T for better evaluation of small anatomical structures of the wrist joint. In another study performed by Jung et al. (8) in 2013 with a 3T scanner on the wrist joint, they compared isotropic 3D-turbo spin echo and 3D fast field echo (FFE) with 2D turbo spin echo. Their investigation showed that image quality of 2D sequence in comparison with 3D isotropic sequences in evaluating cartilages and TFCC is better in 2D sequences. In a study carried out by Crema et al. (9) in 2013 on osteoarthritis knee joint showed that SNR of 3D FSE (SPACE) in comparison with 2D FSE is higher and thus more reliable for diagnosis and determining the extension of osteoarthritis.

In our study, the sequences of BLADE and SPACE were compared with current protocols on wrist joint structures with 3T scanner. 2D FSE sequences are susceptible to pulsation artifacts while the BLADE sequence has direct effect on reducing flow and motion artifact (Figure 5). Changing the phase encoding can realign the motion artifact direction, but it would not be able to eliminate it. SPACE sequence increases the SNR and CNR due to its 3D nature (that increases the volume data), its small pixel size (that improves resolution) and its variable flip angle and decrease of proton saturation. It is expected that increased SNR and decreased artifacts causes better visualization of anatomical structures (especially in small structures) and increased CNR causes better differentiation of anatomical structures in which results in better diagnosis of pathologies. In fact, here we have shown primarily that these sequences could be useful in wrist pathologies and further studies will show diagnostic efficacy of these protocols in this regard.

Our research had some limitations. The examination time was long and some patients were not cooperative enough. We had no multi-channel coil and therefore, parallel imaging was not achievable in order to decrease scan



**Figure 4.** A, Coronal PD BLADE; B, T1 F; C, 3D SPACE; D, T2 FSE FS images of the wrist. PD BLADE image eliminates the motion artifact and improves image quality compared to T1 F, 3D SPACE, and T2 FSE FS.

time.

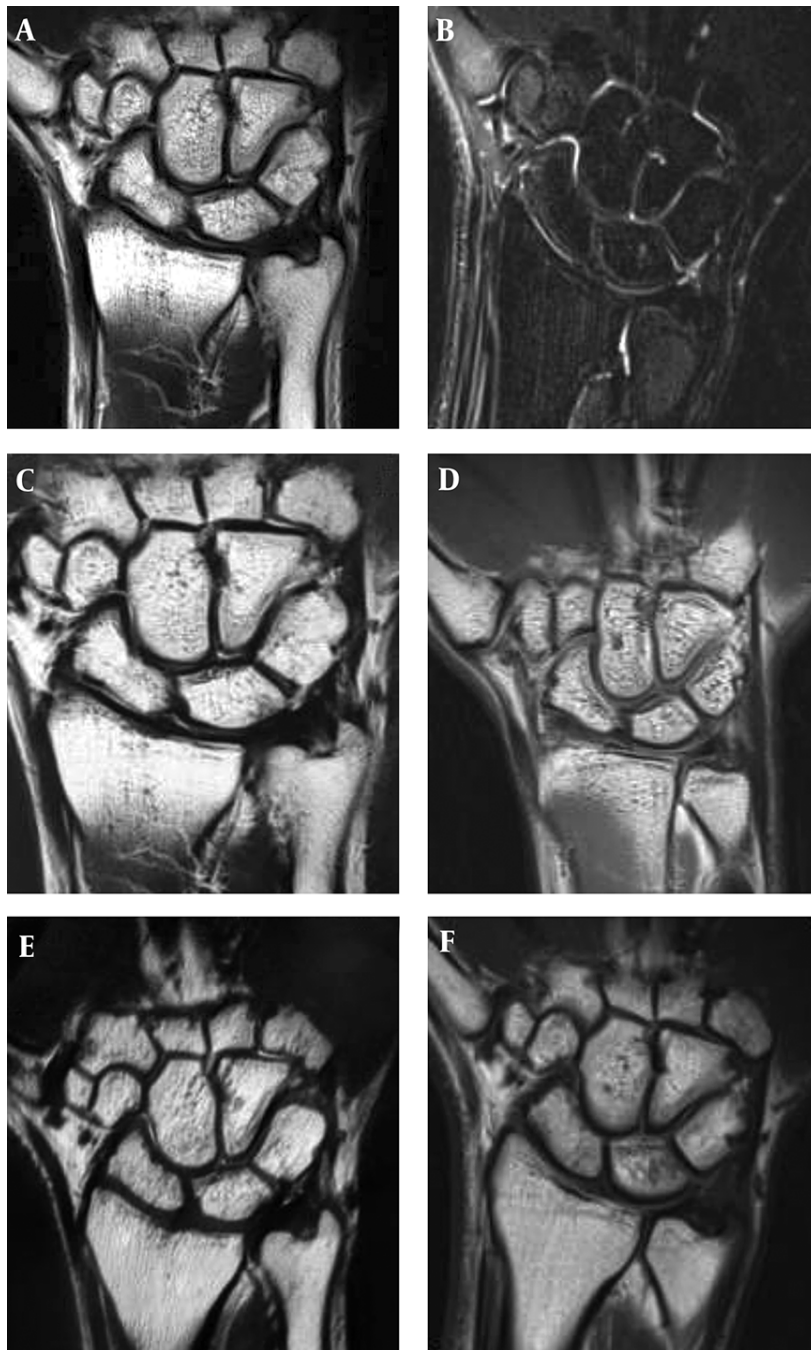
For other investigations, we suggest qualitative comparison of 3D T2SPACE, T2 BLADE, and PD BLADE with current protocols in other pathological disorders of the wrist joint.

#### Footnotes

**Authors' Contributions:** Hamed Naghibi and Hedayatollah Soroush were responsible for study concept, and de-

sign. Hamed Naghibi was responsible for acquisition of data. Analysis and interpretation of the data was carried out by Madjid Shakiba. Drafting of the manuscript was performed by Hamed Naghibi and Hedayatollah Soroush. Madjid Shakiba was responsible for statistical analysis. Administrative, technical, and material support was done by Hassan Hashemi and finally, study supervision was carried out by Fariborz Faeghi.

**Financial Disclosure:** None declared.



**Figure 5.** A, Coronal T2 BLADE; B, T2 FSE FS; C, PD BLADE; D, PD FSE; E, 3D T2 SPACE; and F, T1 FSE images demonstrate anatomical structure of the wrist

**Funding/Support:** This research was funded by Tehran University of Medical Sciences and the patients did not pay for their imaging. This study received a research grant from Tehran University of Medical Sciences.

## References

1. Yoshioka H, Ueno T, Tanaka T, Shindo M, Itai Y. High-resolution MR imaging of triangular fibrocartilage complex (TFCC): comparison of microscopy coils and a conventional small surface coil. *Skeletal Radiol.* 2003;**32**(10):575-81. doi: [10.1007/s00256-003-0672-7](https://doi.org/10.1007/s00256-003-0672-7). [PubMed: [12942205](https://pubmed.ncbi.nlm.nih.gov/12942205/)].

2. Sasao S, Beppu M, Kihara H, Hirata K, Takagi M. An anatomical study of the ligaments of the ulnar compartment of the wrist. *Hand Surg.* 2003;**8**(2):219-26. [PubMed: 15002101].
3. Zlatkin MB, Rosner J. MR imaging of ligaments and triangular fibrocartilage complex of the wrist. *Magn Reson Imaging Clin N Am.* 2004;**12**(2):301-31. doi: 10.1016/j.mric.2004.02.012. [PubMed: 15172388].
4. Stevens KJ, Wallace CG, Chen W, Rosenberg JK, Gold GE. Imaging of the wrist at 1.5 Tesla using isotropic three-dimensional fast spin echo cube. *J Magn Reson Imaging.* 2011;**33**(4):908-15. doi: 10.1002/jmri.22494. [PubMed: 21448957].
5. Zanetti M, Saupe N, Nagy L. Role of MR imaging in chronic wrist pain. *Eur Radiol.* 2007;**17**(4):927-38. doi: 10.1007/s00330-006-0365-4. [PubMed: 16932876].
6. Lenk S, Ludescher B, Martirosan P, Schick F, Claussen CD, Schlemmer HP. 3.0 T high-resolution MR imaging of carpal ligaments and TFCC. *Rofo.* 2004;**176**(5):664-7. doi: 10.1055/s-2004-813112. [PubMed: 15122464].
7. Bittersohl B, Huang T, Schneider E, Blazar P, Winalski C, Lang P, et al. High-resolution MRI of the triangular fibrocartilage complex (TFCC) at 3T: comparison of surface coil and volume coil. *J Magn Reson Imaging.* 2007;**26**(3):701-7. doi: 10.1002/jmri.21077. [PubMed: 17729361].
8. Jung JY, Yoon YC, Jung JY, Choe BK. Qualitative and quantitative assessment of wrist MRI at 3.0T: comparison between isotropic 3D turbo spin echo and isotropic 3D fast field echo and 2D turbo spin echo. *Acta Radiol.* 2013;**54**(3):284-91. doi: 10.1258/ar.2012.120475. [PubMed: 23319720].
9. Crema MD, Nogueira-Barbosa MH, Roemer FW, Marra MD, Niu J, Chagas-Neto FA, et al. Three-dimensional turbo spin-echo magnetic resonance imaging (MRI) and semiquantitative assessment of knee osteoarthritis: comparison with two-dimensional routine MRI. *Osteoarthritis Cartilage.* 2013;**21**(3):428-33. doi: 10.1016/j.joca.2012.12.011. [PubMed: 23274102].