



# Evaluation of Suspicious Appearing Microcalcification Groups on Mammogram: Comparing BI-RADS 5th Edition Descriptors with the BI-RADS 4th Edition and Pathologic Association

Nasrin Ahmadinejad,<sup>1,2</sup> Maryam Jafari,<sup>3,\*</sup> Maryam Rahmani,<sup>1,2</sup> Kiara Rezaei-Kalantari,<sup>4</sup> and Madjid Shakiba<sup>1</sup>

<sup>1</sup>Advanced Diagnostic and Interventional Radiology Research Center, Tehran University of Medical Sciences, Tehran, Iran

<sup>2</sup>Department of Radiology, Breast Cancer Institute, Imam-Khomeini Hospital, Tehran University of Medical Sciences, Tehran, Iran

<sup>3</sup>Department of Breast Disease, Breast Cancer Research Center, ACECR, Tehran, Iran

<sup>4</sup>Department of Radiology, Rajaie Cardiovascular Medical and Research Center, Iran University of Medical Sciences, Tehran, Iran

\*Corresponding author: Maryam Jafari, Department of Breast Disease, Breast Cancer Research Center, ACECR, Tehran, Iran. Tel: +98-9128715912, E-mail: maryajafarimd@gmail.com

Received 2016 June 20; Revised 2017 May 24; Accepted 2017 November 21.

## Abstract

**Background:** Groups of microcalcifications are the most frequent recognized features of ductal carcinoma on mammograms. However, heterogeneity (in size, morphology and density) and number of microcalcification groups as well as presence of accompanied soft-tissue density are not included in breast imaging reporting and data system (BI-RADS) descriptors.

**Objectives:** The study purposes to determine the malignancy risk of microcalcification groups regarding these characteristics and also compare the 4th and 5th versions of BI-RADS.

**Patients and Methods:** In a cross sectional study, 88 patients with microcalcification groups (age range, 26 - 80 years; mean, 53.4 years) who had undergone mammographically guided biopsy between March 2013 and March 2015 were evaluated. The overall number of microcalcification groups in each patient, number of deposits within each group, group location and heterogeneity in size, density and morphology were assessed and subsequently BI-RADS descriptors for 4th and 5th editions were recorded separately. Finally, correlation with histopathology was performed.

**Results:** Overall, positive predictive value (PPV) of suspicious microcalcifications was 22.4%. PPVs of morphology descriptors were as follows: amorphous, 7.9%; coarse heterogeneous, 17.8%; fine pleomorphic, 63.2%; fine linear/fine linear branching, 100%; ( $P < 0.001$ ). Heterogeneity in size existed in 81 cases (92%), in density in 69 cases (86.4%) and in morphology in 86 cases (97.7%). Additionally, microcalcification groups that were accompanied with soft-tissue density had a higher percentage of malignancy (67.5% vs. 54.5%) but with no significant difference ( $P = 0.2$ ). According to BI-RADS 4th edition, the risk of malignancy was 49.1%, 66.7% and 88.1% in 4b, 4c and 5, respectively. These figures were 30%, 82.9%, and 100% for BI-RADS 5th version, respectively. The area under the receiver (AUC) of 4th and 5th versions of BI-RADS was 0.76 and 0.74 (both  $P$  values  $< 0.001$ , 95% confidence intervals = 0.66-0.87 and 0.63 - 0.85 respectively).  $P$  value for comparison was insignificant.

**Conclusion:** The risk of malignancy increased with the heterogeneity of microcalcifications, especially in the groups with heterogeneity in density, however with no statistically significant difference. BI-RADS 5th edition could predict the likelihood of malignancy as well as 4th version.

**Keywords:** BI-RADS, Suspicious Microcalcifications, Mammography

## 1. Background

Mammographically visible microcalcifications are present in approximately 55% of non-palpable breast malignancies (1). They are responsible for detection of 85% - 95% of the cases of ductal carcinoma in situ (DCIS) by screening mammography (2). DCIS accounts for 20% - 25% of breast cancers detected at screening mammography (3).

The Breast Imaging Reporting and Data System (BI-RADS) has standardized and facilitated the description and management of microcalcifications identified on mammograms (4, 5).

Based on BI-RADS 5th edition that was published in 2013, the term of grouped distribution (historically "clustered") is usually used when five calcifications grouped within 1 cm of each other or when a definable pattern is

identified. The upper limit for use of this descriptor is when larger numbers of calcifications gather within 2cm of each other (4, 5). The microcalcifications with morphology of coarse heterogeneous, fine pleomorphic, fine linear, fine linear branching and amorphous are suspicious forms and should further evaluate by biopsy.

In detail, suspicious morphology is defined as follows:

1. Amorphous (BI-RADS 4b; hazy in appearance with no distinct and sharp border)

2. Coarse heterogeneous (BI-RADS 4b; irregular calcifications smaller than dystrophic calcifications measured between 0.5 mm and 1 mm, they tend to coalesce)

3. Fine pleomorphic (BI-RADS 4c; usually more conspicuous than amorphous forms with discrete shapes often measure < 0.5 mm)

4. Fine linear or fine-linear branching (BI-RADS 4c; thin and irregular linear calcifications measure usually < 0.5 mm).

In the previous 2003 atlas of BI-RADS (4th edition), the clusters of microcalcifications were classified by morphology and distribution either as benign, intermediate concern or high probability of malignancy; and groups with fine pleomorphic and linear morphology were categorized as BI-RADS 5 category. Nevertheless, in the new 2013 version, the approach has changed and they were reclassified as suspicious forms (BI-RADS 4C) (4, 5). Therefore, groups with coarse heterogeneous and amorphous morphology are included in 4b category and the fine pleomorphic and fine linear branching morphologies are in the 4c category. If any distortion is associated with the latter forms, the final BIRADS would be 5 (4, 5).

On the other hand, heterogeneity (in size, morphology and density) and number of microcalcification within a group are not included in BI-RADS classification.

## 2. Objectives

The purpose of this study was to retrospectively determine the malignancy risk of microcalcification groups regarding these characteristics. In addition, we compared the fourth and fifth editions of BI-RADS in their interpretation.

## 3. Patients and Methods

In a cross sectional study, 88 patients with microcalcification groups (age range, 26 - 80 years; mean, 53.4 years) who had undergone mammographically guided biopsy between March 2013 and March 2015 were evaluated.

All mammographic examinations were obtained by using a LORAD Selenia (Hologic) full-field digital mammography system. Screening and diagnostic mammograms were

obtained prior to mammographically guided biopsy, then analyzed by a breast subspecialty-trained radiologist.

Overall, the number of microcalcification groups in each patient, number of deposits within each group, group location and heterogeneity in size, density and morphology assessed and subsequently BI-RADS descriptors for fourth and fifth editions were recorded separately. Finally, correlation with histopathology was performed.

### 3.1. Statistical Analysis

In statistical analysis, the Fisher-Freeman-Halton Exact Test, the linear association chi-square test and SPSS were used to evaluate the statistical significance among the descriptor groups with respect to the risk of malignancy.

A statistically significant difference was defined as P values of less than 0.05 and for results found to be statistically significant, odds ratios and 95% confidence intervals (CIs) were used in a pairwise method to assess differences.

Additionally, for assessment of the efficacy of BIRADS versions we used receiver operating characteristics (ROC) curves.

## 4. Results

In this study, 88 patients, who had grouped calcifications on mammogram and underwent mammo-guided biopsy, were included. All of them were women with the mean age of 54.3 years. The malignant groups composed 53 out of 88 (60.2%) cases and were mostly located in the upper outer quadrants in 30 (34%) cases (Table 1), mostly in upper parts and further in the left breast in 49 (55.7%) cases.

**Table 1.** Location of the Calcification Groups

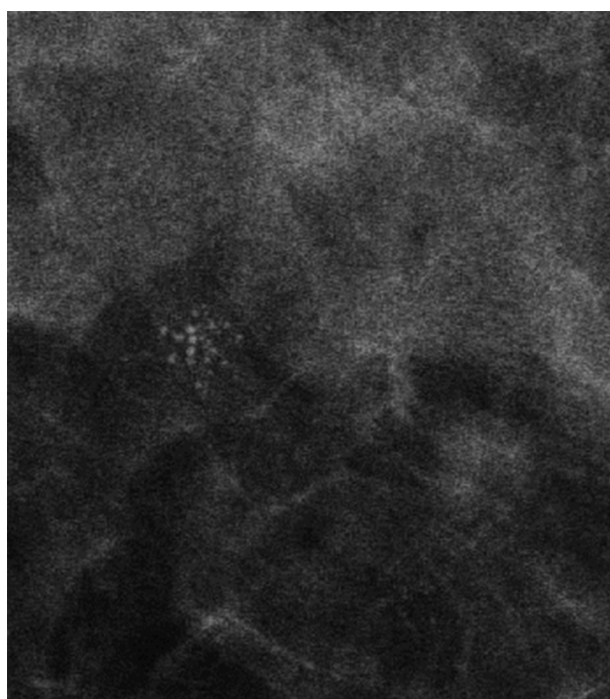
Location	No. (%)
Upper/outer	30 (34.1)
Upper/inner	2 (2.3)
Lower/inner	4 (4.5)
Lower/outer	6 (6.8)
Upper	18 (20.5)
Medial	2 (2.3)
Lower	8 (9.1)
Lateral	5 (5.7)
Retroareolar/Central	13 (14.8)

Evaluation of frequency distribution demonstrated that the most common morphology descriptors included pleomorphic (27/88, 30.7%) and amorphous (26/88, 29.5%). The less frequent features were coarse heterogeneous (19/88, 21.6%) and fine linear and fine linear branching

(16/88, 18. 2%). In 86.4% of cases, the calcium flecks within the group were above 10.

Heterogeneity in size was seen in 81 cases (92%) and in density and morphology it was noted in 69 (78.4%) and 86 cases (97.7%), respectively.

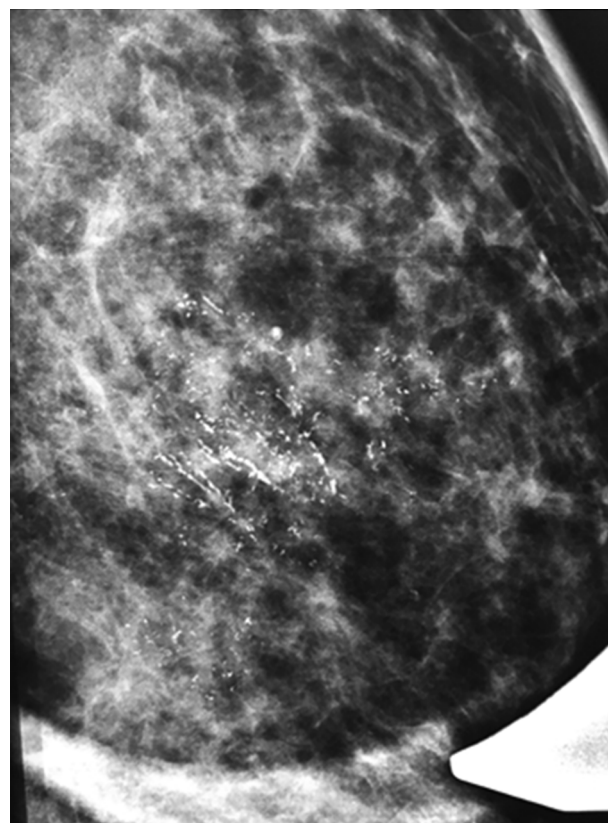
The probability of malignancy based on morphology is as follows: coarse heterogeneous (Figure 1), 42.1% (8 out of 19); amorphous (Figure 2), 29% (7 out of 26); fine pleomorphic, 85.2% (23 out of 27); and fine linear (Figure 3) and fine linear branching, 93% (15 out of 16), which showed a statistically significant difference between these groups ( $P < 0.001$ ) (Table 2).



**Figure 1.** Calcification groups that have amorphous morphology as seen here on magnification view. They were suspicious, which led to the diagnosis of fibrocystic changes after histopathological assessment.

As shown in Table 3, the likelihood of malignancy in groups under 10 in number of microcalcifications were 50% (6 out of 12) and in above 10 group, 61.8% (47 out of 76). Heterogeneity in size existed in 81 cases (92%), in density, in 69 cases (86.4%) and in morphology, in 86 cases (97.7%).

The risk of malignancy increased with the heterogeneity of microcalcifications especially in the groups with heterogeneity in density, however with no statistically significant difference. ( $P=0.68$ ). The overall PPV of suspicious microcalcifications was 22.4%. PPVs of morphology descriptors were as follows: amorphous, 7.9 %; coarse heterogeneous, 17.8 %; fine pleomorphic, 63.2 %; fine linear/fine lin-



**Figure 2.** There are calcifications with fine linear morphology and fine-linear branching morphology on this magnification view. As we know, they should be judged by those with the worse morphology. Core biopsy showed invasive ductal carcinoma.

**Table 2.** Probability of Malignancy Regarding Morphology of the Calcifications, All with Grouped Distribution<sup>a</sup>

Morphology descriptor	Probability of malignancy	Positive predictive value
Amorphous	7/26 (29)	7.9
Coarse heterogeneous	8/19 (42.1)	17.8
Fine linear or fine-linear branching	23/27 (85.2)	63.2
Fine pleomorphic	15/16 (93)	100

<sup>a</sup>Values are expressed as No.(%)

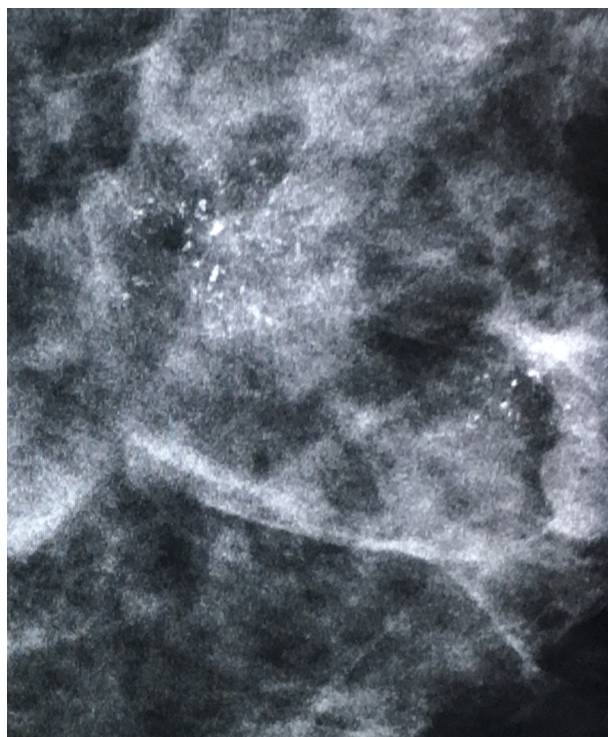
ear branching, 100 % ( $P < 0.001$ ).

We assessed the area under the receiver operating characteristic (AUC of ROC) curve for evaluating BIRADS efficacy in predicting the risk of malignancy, regarding that the AUC of 4th and 5th versions of BIRADS were 0.76 and 0.74 (both  $P$  values  $< 0.001$ , 95% confidence intervals = 0.66 - 0.87 and 0.63 - 0.85 respectively).  $P$  value for comparison

**Table 3.** Diagnostic Efficacies of Different Descriptors for Malignancy

Variable	TP	FN	TN	FP	Sen %95CI	Spec %95CI	PPV %95CI	NPV %95CI	PLR %95CI	NLR %95CI	Accuracy %95CI
Number (<10 and >10)	47	6	6	30	0.89 (0.77-0.96)	0.17 (0.06-0.33)	0.61 (0.49-0.72)	0.5 (0.21-0.79)	1.1 (0.89-1.3)	1.47 (0.5-4.1)	0.6 (0.49-0.7)
Size heterogeneity	51	2	6	30	0.96 (0.87-0.99)	0.17 (0.06-0.33)	0.63 (0.52-0.73)	0.75 (0.35-0.17)	1.2 (0.99-1.3)	4.4 (0.94-20.7)	0.64 (0.53-0.74)
Density heterogeneity	45	8	12	24	0.85 (0.72-0.93)	0.33 (0.19-0.51)	0.65 (0.53-0.76)	0.6 (0.36-0.81)	1.3 (0.98-1.6)	2.2 (1-4.9)	0.63 (0.5-0.74)
Morphology heterogeneity	53	0	2	34	1 (0.93-1)	0.06 (0.01-0.19)	0.61 (0.5-0.71)	1 (0.16-1)	1.1 (0.98-1.1)	-	0.62 (0.51-0.72)
Distribution (1 vs. >1)	13	40	28	8	0.25 (0.14-0.38)	0.78 (0.61-0.9)	0.62 (0.38-0.82)	0.41 (0.29-0.54)	1.1 (0.51-2.4)	1.3 (0.82-1.3)	0.46 (0.35-0.57)
Associated (yes vs. no)	27	26	23	13	0.51 (0.37-0.65)	0.64 (0.46-0.79)	0.68 (0.51-0.81)	0.47 (0.33-0.62)	1.4 (0.85-2.3)	1.3 (0.9-1.9)	0.56 (0.45-0.67)

Abbreviations: CI, confidence interval; FN, false negative; FP, false positive; NLR, negative likelihood ratio; NPV, negative predictive value; PLR, positive likelihood ratio; PPV, positive predictive value; Sen, sensitivity; spec, specificity; TN, true negative; TP, true positive.



**Figure 3.** In this mammogram, groups of coarse heterogeneous morphology with tissue distortion are due to invasive ductal carcinoma.

of two BIRADS was insignificant. Considering successive cutoff points [(4a - 4b), (4b - 4c) and (4 - 5)] for BIRADS versions, diagnostic efficacies of two BIRADS versions were calculated (Table 4).

## 5. Discussion

Calcium deposits are extremely common in mammograms which increase with age between the ranges of 8 to 86% (6).

As previous studies reported, small calcium groupings are one of the frequent features of breast cancer on mammograms (7). In this study, most of the calcium groups were histologically malignant and located in the left upper and upper outer quadrants. The pleomorphic and amorphous morphologies are the most common forms. Calcium flecks within the group were above 10 in most groups.

Mammographic assessment of microcalcifications and classification according to BI-RADS system is an essential part of abnormal screening or diagnostic mammograms. Regarding the last edition of BI-RADS system, when they are visible in a volume of approximately 2 cm<sup>3</sup> with a numerical threshold of five or more calcium flecks, 20% to 25% of them may indicate cancer.

The risk of malignancy accompanied with a mammographic microcalcification in our study is comparable to results done by most investigators with the range of 13% - 36% (8-10). Our data showed that the positive predictive value for microcalcification group risk of malignancy is 22.4%.

The most important element of microcalcification characteristics is morphology. The shape of calcium flecks and heterogeneity of them in shape are valuable in determining the likelihood of malignancy and suspicion should be aroused as previously reported in prior studies (11).

The microcalcification morphologic descriptors amorphous, coarse heterogeneous, fine pleomorphic, and fine linear had a progressively increasing risk of malignancy especially the fine linear and fine linear branching types

**Table 4.** Diagnostic Efficacies of Two BI-RADS Lexicons in Different Cutoff Points

BI-RADS Version	Cutt-Off Point	TP	FN	TN	FP	Sen [95%CI]	Spec [95%CI]	PPV [95%CI]	NPV [95%CI]	PLR [95%CI]	NLR [95%CI]	Accuracy [95%CI]
4th	4a versus others	58	1	5	24	98 [91-99]	17 [6-36]	71 [60-80]	83 [36-99]	1.2 [1-1.4]	10.2 [1.2-83]	72 [61-81]
	(4a and 4b) versus others	41	18	22	7	69 [56-81]	76 [56-90]	85 [72-94]	55 [38-71]	2.9 [1.5-5.6]	2.5 [1.6-3.8]	72 [61-81]
	4 versus 5	37	22	24	5	63 [49-75]	83 [64-94]	88 [74-96]	52 [37-67]	3.6 [1.6-8.3]	2.2 [1.5-3.2]	69 [59-79]
5th	4b versus others	41	18	22	7	69 [56-81]	76 [56-90]	85 [72-94]	55 [38-71]	2.9 [1.5-5.6]	2.5 [1.6-3.8]	72 [61-81]
	4 versus 5	7	52	29	0	12 [5-23]	100 [88-100]	100 [59-100]	36 [25-47]	-	1.1 [1-1.2]	41 [31-52]

Abbreviations: BI-RADS, breast imaging reporting and data system; CI, confidence interval; FN, false negative; FP, false positive; NLR, negative likelihood ratio; NPV, negative predictive value; PLR, positive likelihood ratio; PPV, positive predictive value; Sen, sensitivity; spec, specificity; TN, true negative; TP, true positive.

with estimated percentages of 29%, 42%, 85% and 93%, respectively.

The positive predictive value of malignancy likelihood for fine pleomorphic and fine linear/fine linear branching are higher than previous similar studies (4-12).

It can be mentioned that in the case of coarse heterogeneous morphology, the risk of malignancy is compatible with prior data; although relatively few studies have been carried out before (12).

Additionally, the risk of malignancy of amorphous morphology (7.9%) shows lower PPV compared to prior studies; however, regarding BI-RADS system, this morphology descriptor with about eight percent of malignancy is within the 4b category (higher than 2%).

Pathologically, the overall heterogeneity and number of calcium deposits could be due to the process of tumor necrosis. Therefore, in our experience and that of others, irregular heterogeneous groups with an increased number of calcium flecks are more suspicious for malignancy reasonably as Egan et al. concluded in a study and found similar results.

Heterogeneity in size, density and morphology of microcalcification groups as well as increasing numbers of calcium deposits within a group increased the likelihood of malignancy with CI of 1, 0.96, 0.89 and 0.85, respectively.

In this study, group microcalcifications in association with an asymmetry, ill-defined density or tissue distortion are of more concern and increased risk of malignancy, which is consistent with previous studies (13).

Apparently, BI-RADS category 5 is usually reserved for lesions having a 95% probability of malignancy. If a mammogram is classified into BI-RADS category 4 or 5 it tends to have a positive predictive value of breast cancer of approximately 2% or more.

The frequency of carcinoma was higher in category 5 than in category 4 lesions, which is similar to previously reported findings (4, 5).

In conclusion, in this study we found that the descriptors in BI-RADS 5th edition could predict the risk of malignancy as well as 4th edition with no significant statistical difference although comparing PPV of descriptors, the likelihood of malignancy is slightly closer to the 5th edition predictors than the 4th.

## References

- Gajdos C, Tartter PI, Bleiweiss IJ, Hermann G, de Csepe J, Estabrook A, et al. Mammographic appearance of nonpalpable breast cancer reflects pathologic characteristics. *Ann Surg.* 2002;**235**(2):246-51. [PubMed: [11807365](#)].
- de Roos MA, van der Veegt B, de Vries J, Wesseling J, de Bock GH. Pathological and biological differences between screen-detected and interval ductal carcinoma in situ of the breast. *Ann Surg Oncol.* 2007;**14**(7):2097-104. doi: [10.1245/s10434-007-9395-7](#). [PubMed: [17453296](#)].
- Yamada T, Mori N, Watanabe M, Kimijima I, Okumoto T, Seiji K, et al. Radiologic-pathologic correlation of ductal carcinoma in situ. *Radiographics.* 2010;**30**(5):1183-98. doi: [10.1148/rg.305095073](#). [PubMed: [20833844](#)].
- American College of Radiology. *Breast imaging reporting and data system*. Reston: American College of Radiology; 2003.
- American College of Radiology. *Breast imaging reporting and data system (BI-RADS)*. Reston: American College of Radiology; 2013.
- Stomper PC, D'Souza DJ, DiNitto PA, Arredondo MA. Analysis of parenchymal density on mammograms in 1353 women 25-79 years old. *AJR Am J Roentgenol.* 1996;**167**(5):1261-5. doi: [10.2214/ajr.167.5.8911192](#). [PubMed: [8911192](#)].
- Meyer JE, Kopans DB, Stomper PC, Lindfors KK. Occult breast abnormalities: percutaneous preoperative needle localization. *Radiology.* 1984;**150**(2):335-7. doi: [10.1148/radiology.150.2.6691085](#). [PubMed: [6691085](#)].
- Burnside ES, Ochsner JE, Fowler KJ, Fine JP, Salkowski LR, Rubin DL, et al. Use of microcalcification descriptors in BI-RADS 4th edition to stratify risk of malignancy. *Radiology.* 2007;**242**(2):388-95. doi: [10.1148/radiol.2422052130](#). [PubMed: [17255409](#)].
- Liberman L, Abramson AF, Squires FB, Glassman JR, Morris EA, Dershaw DD. The breast imaging reporting and data system: positive predictive value of mammographic features and final assessment categories. *AJR Am J Roentgenol.* 1998;**171**(1):35-40. doi: [10.2214/ajr.171.1.9648759](#). [PubMed: [9648759](#)].

10. Uematsu T, Kasami M, Yuen S. Usefulness and limitations of the Japan Mammography Guidelines for the categorization of microcalcifications. *Breast Cancer*. 2008;**15**(4):291-7. doi: [10.1007/s12282-008-0033-4](https://doi.org/10.1007/s12282-008-0033-4). [PubMed: [18288569](https://pubmed.ncbi.nlm.nih.gov/18288569/)].
11. Mayr NA, Staples JJ, Hussey DH, Robinson RA, Vanmetre JE. Morphometric studies in intraductal breast carcinoma using computerized image analysis. *Cancer*. 1991;**67**(11):2805-12. doi: [10.1002/1097-0142\(19910601\)67:11lt;2805::aid-cnrcr2820671116gt;3.0.co;2-d](https://doi.org/10.1002/1097-0142(19910601)67:11lt;2805::aid-cnrcr2820671116gt;3.0.co;2-d).
12. Bent CK, Bassett LW, D'Orsi CJ, Sayre JW. The positive predictive value of BI-RADS microcalcification descriptors and final assessment categories. *AJR Am J Roentgenol*. 2010;**194**(5):1378-83. doi: [10.2214/AJR.09.3423](https://doi.org/10.2214/AJR.09.3423). [PubMed: [20410428](https://pubmed.ncbi.nlm.nih.gov/20410428/)].
13. Egan RL, McSweeney MB, Sewell CW. Intramammary calcifications without an associated mass in benign and malignant diseases. *Radiology*. 1980;**137**(1 Pt 1):1-7. doi: [10.1148/radiology.137.1.7422830](https://doi.org/10.1148/radiology.137.1.7422830). [PubMed: [7422830](https://pubmed.ncbi.nlm.nih.gov/7422830/)].