

Anomalous Origin of the Right Coronary Artery from the Mid-Portion of the Left Anterior Descending Artery in a Patient with Single Left Coronary Artery: A Rare Coronary Artery Anomaly and Review of Literature

Mahmoud Beheshti Monfared,¹ Hamid Ghaderi,¹ Taraneh Faghihi Langroudi,² Seyedeh Adeleh

Mirjafari,^{3*} Mahnoosh Foroughi,⁴ Mohammad Forozeshfard,⁵ and Farshid Heidarpour Kiaie⁶

¹Department of Cardiovascular Surgery, Shahid Modarres Hospital, Shahid Beheshti University of Medical Sciences, Tehran, Iran

²Department of Radiology, Shahid Modarres Hospital, Shahid Beheshti University of Medical Sciences, Tehran, Iran

³Brain and Spinal Injury Research Center (BASIR), Tehran University of Medical Sciences, Tehran, Iran

⁴Cardiovascular Research Center, Department of Cardiovascular Surgery, Shahid Modarres Hospital, Shahid Beheshti University of Medical Sciences, Tehran, Iran

⁵Department of Anesthesiology, Semnan University of Medical Sciences, Semnan, Iran

⁶Cardiovascular Research Center, Department of Cardiology, Shahid Modarres Hospital, Shahid Beheshti University of Medical Sciences, Tehran, Iran

*Corresponding author: Seyedeh Adeleh Mirjafari, Brain and Spinal Injury Research Center (BASIR), Imam Khomeini Hospital Complex, Keshavarz Blvd., Tehran, Iran. Tel: +98-2166581561, E-mail: adeleh_60@yahoo.com

Received 2014 September 09; Revised 2014 October 26; Accepted 2014 November 15.

Abstract

Origination of the right coronary artery (RCA) from the left anterior descending (LAD) artery is a case of single coronary artery. It is an extremely rare coronary artery abnormality and usually an incidental finding during coronary angiography. A 73-year-old man with a medical history of hypertension arrived with chest pain. Medical therapy started for ST elevated myocardial ischemia. During his diagnostic coronary angiogram, RCA was visualized as abnormally orientating from the mid-portion of LAD. A significant lesion in the proximal part of LAD, significant long lesion in the diagonal artery, and several stenoses in the obtuse marginal artery (OMA) were observed. To evaluate the course of RCA, coronary computed tomography angiography (coronary CTA) scan was performed. The patient underwent coronary artery bypass graft (CABG) for three vessels. He was discharged without any complication and no problems were detected in follow-up. In conclusion, if during classic angiography, RCA is not seen, the physician should keep in mind that RCA may originate from LAD. Current classification cannot exactly determine this anomaly and needs revision. When there is suspicion for coronary anomaly, performing coronary CTA can be helpful for better management and planning of therapy.

Keywords: Anomalous Coronary Artery, Right Coronary Artery, Left Anterior Descending Artery, Diagnosis, Therapy

1. Introduction

The term “single coronary artery” emphasizes on a coronary artery originating from a single coronary ostium on the aorta. Origination of the right coronary artery (RCA) from the left anterior descending (LAD) artery is a type of single coronary artery that is an extremely rare coronary artery abnormality (incidence 0.024%) (1). It is usually an incidental finding during coronary angiography (2).

We found only less than 40 case reports in which RCA originated from LAD and just less than 15 case reports in which RCA originated from the mid-portion of LAD in PubMed. In most of the published cases, anomalous RCA originated from the left main artery (LMA) or proximal portion of LAD (3).

We present a patient with multiple stenoses in the proximal part of LAD, long lesion in the diagonal artery, several stenoses in the obtuse marginal artery (OMA), and

RCA arose from the mid-portion of LAD.

2. Case Presentation

A 73-year-old man was admitted to our hospital complaining of chest pain and functional class III-IV. His medical history consisted of hypertension. He was a smoker and had suffered from chest pain for 2 weeks. On admission, his electrocardiogram (ECG) showed ST segment elevation in leads I, II, aVL and V3-V6 associated with right anterior hemiblock. Cardiac enzyme levels were elevated. His transthoracic echocardiogram was normal. Medical therapy was started for ST elevated myocardial ischemia and diagnostic coronary angiogram was performed. During his diagnostic coronary angiogram, multiple attempts for cannulation of the RCA by right Judkins catheter were unsuccessful and the catheter could not be engaged in the ostium of the RCA. Aortic root angiography showed no def-

inite origin for RCA on the right sinus of Valsalva. The left coronary ostium was located normally and its cannulation was performed displaying a normal course of LAD and showed dominance of left circumflex (LCX) (Figures 1 and 2). RCA was visualized originating anomalously from the mid-portion of LAD. A significant lesion in the proximal part of LAD, significant long lesion in the diagonal artery and several stenoses in OMA were observed. Left ventriculography was normal, with an ejection fraction of 55%. Neither aortography nor pulmonary artery angiography showed presence of another origin for a supplementary RCA.

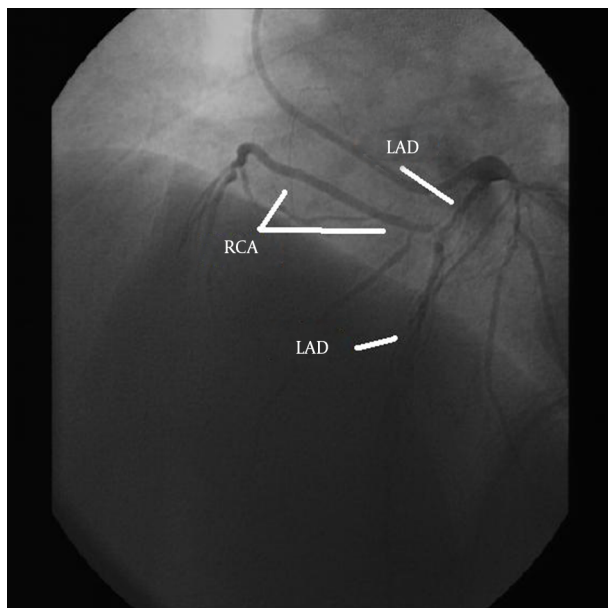


Figure 1. A 73-year-old man with chest pain who underwent angiography. Right coronary artery originating from the mid-portion of the left anterior descending artery. LAD, left anterior descending; RCA, Right Coronary Artery.

To evaluate the course of RCA (posterior or anterior to the pulmonary artery) and to exclude the presence of any origin for a supplementary RCA from another site, coronary CTA was performed using 64-slice single-source scanner (Brilliance 64, Philips Medical System, Cleveland, OH, USA) (Figures 3 and 4). The coronary CTA showed the origin of RCA on the mid-portion of LAD passing horizontally anterior to the pulmonary artery and entering the right atrioventricular groove.

The patient was referred for coronary artery bypass graft (CABG) and he was evaluated by cardiovascular surgeons for surgical treatment. The patient underwent coronary artery bypass graft and the findings during surgery confirmed the findings of angiography and coronary CTA (Figure 5). He underwent coronary artery bypass graft-

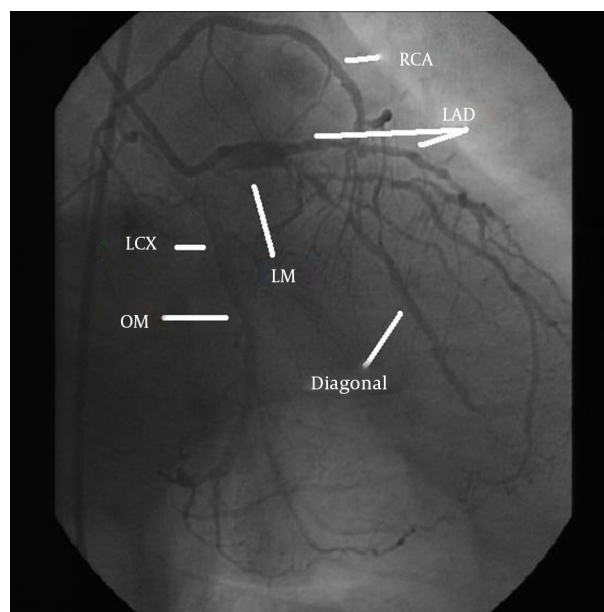


Figure 2. Right coronary artery originating from the mid portion of the left anterior descending Artery. LM, left main; LAD, left anterior descending; OM, obtuse marginal; LCX, left circumflex artery; RCA, right coronary artery.

ing (CABG) for three vessels; left internal mammary artery (LIMA) to LAD, and three saphenous vein grafts to RCA and diagonal and OMA. He was discharged 8 days after surgery with no complication. His echocardiogram on follow-up showed good biventricular function.

3. Discussion

Coronary artery anomaly exists in 0.6% to 5.6% of patients undergoing coronary angiography, 1% of routine autopsy studies (3, 4), and 2.93% of coronary CT angiographies (5).

The most common coronary anomaly is the circumflex coronary artery arising from the right sinus or from RCA (0.37% - 0.6%) (2, 5), right coronary artery arising from the left sinus of Valsalva and the left main coronary artery arising abnormally from the right sinus of Valsalva (0.17% in autopsy series and 0.1% - 0.3% in patients undergoing catheterization or echocardiography) (2, 6, 7).

Lipton reported single coronary artery in approximately 0.024% of the general population (1). A variety of anomalous origins of RCA (left anterior sinus with variable courses, ascending aorta above the sinus level, descending thoracic aorta, left main coronary artery, circumflex coronary artery, the pulmonary arteries, or below the aortic valve) have been reported (8, 9).

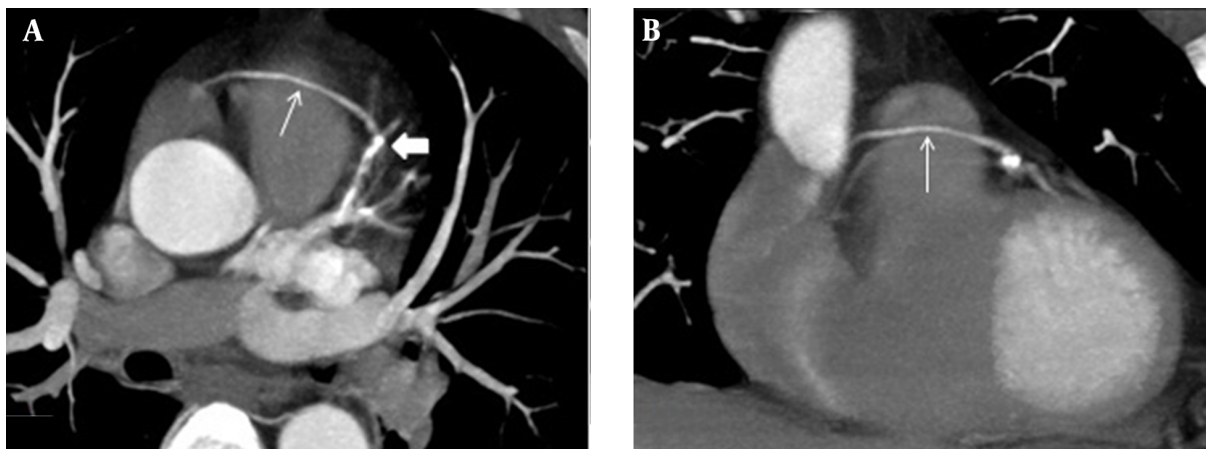


Figure 3. Maximum intensity projection in axial (A) and coronal (B) planes of coronary computed tomography angiography. The right coronary artery (thin arrow) originates from the midportion of the left anterior descending (thick arrow) passing anterior to the pulmonary artery.

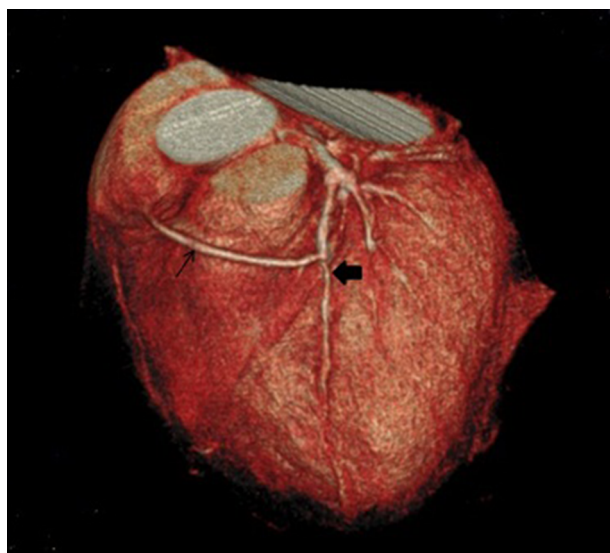


Figure 4. Three-dimensional volume-rendered reconstruction of coronary computed tomography angiography angiogram. Right coronary artery (thin arrow) originates from the midportion of the left anterior descending (thick arrow) passing anterior to the pulmonary artery.

Anomalous origin of RCA (ARCA) from LAD has rarely been reported and we found only less than 40 published cases with this specific coronary anomaly (10). In the most of these reported cases, ARCA originated from LM (2, 7). There was only 15 reported cases in which the origin of ARCA was from the midportion of LAD (2, 3) (Table 1).

According to modified Lipton classification, our case can be categorized as "LIIA" anomaly (23). (L type: single coronary artery arising from the left sinus of Valsalva;

group II: arise from the proximal part of the normal right or left coronary artery; A (anterior): anomalous coronary artery passes anterior to the pulmonary artery) (3, 23). However, this classification can not exactly define a coronary artery anomaly that originates from the midportion of LAD.

Although single coronary artery is commonly associated with other congenital cardiovascular anomalies such as transposition of the great vessels, coronary arteriovenous fistula, bicuspid aortic valve, tetralogy of Fallot and origin from the pulmonary artery (3), most of the patients (97%) with RCA arising from LAD have a structurally normal heart (9). Only two of the cases had association with tetralogy of Fallot (24, 25).

Prognosis of this type of anomaly on depends on the coronary perfusion. The anomalous vessel with the interarterial course (between aorta and pulmonary arteries) is considered malignant or serious and the prognosis is better for a vessel with an anterior course. If the course of RCA is not between the aorta and pulmonary artery, this anomaly has a better prognosis (2). Benign anomalous addresses an anomalous in which the LCX originates from the right circulation (26, 27) and we will not discuss this anomaly in this article.

If ARCA is compressed between the pulmonary artery and aorta, myocardial ischemia and sudden death may occur (3, 28). Some studies suggest that ARCA is prone to atherosclerosis (22) but in 15% of patients with ARCA, myocardial ischemia can progress without atherosclerosis (3).

Some hypotheses explain myocardial ischemia and sudden death due to coronary vasospasm, acute angle take off, slit like orifice, intramural course, and compression by the great vessels (3). Some studies based on autopsy

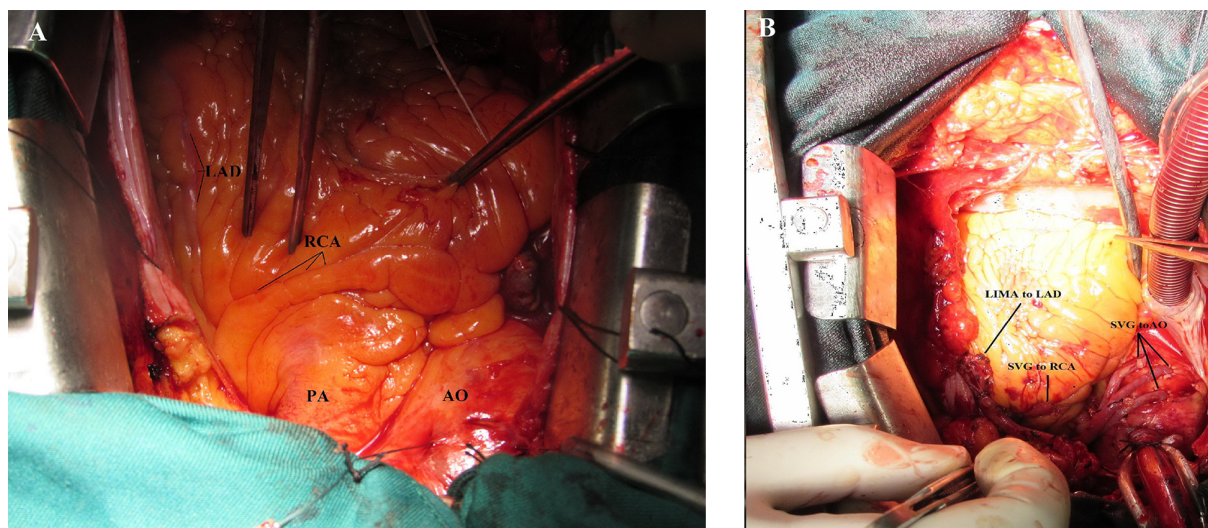


Figure 5. The course of the right coronary artery. A, Intraoperative photo; B, After coronary artery bypass graft (CABG). LAD, left anterior descending; RCA, right coronary artery; AO, aorta; PA, pulmonary artery; LIMA to LAD, anastomosis of left internal mammary artery to left anterior descending artery; SVG to AO, anastomosis of saphenous vein grafts to aorta; SVG to RCA, anastomosis of saphenous vein grafts to right coronary artery.

cases have shown that slit-like orifice structure and acute angle take off are more common in sudden cardiac death patients (2, 25, 29).

Patients with ARCA may be asymptomatic and 25% of them die suddenly (29). Patients with coronary anomaly may present with chest pain, dyspnea, palpitation, syncope, sudden death, ventricular fibrillation or myocardial infarction (3). Our patient presented with myocardial infarction.

A diagnostic tool for ARCA is coronary angiography and they are usually an incidental finding. If RCA is not seen during classic angiography, the physician should keep in mind that RCA can originate from LAD. Coronary CTA is a very useful diagnostic tool to determine the anatomy of the coronary arteries, the possible anomalies, and their relationship with great vessels (30). CT angiography is the gold standard investigation tool in evaluating coronary anomalies and their anatomic relationship to adjacent structures (3, 30). Recent guidelines and appropriateness criteria favor the use of coronary CTA for the evaluation of coronary anomalies (31).

Treatments for coronary anomaly include medical therapy, percutaneous coronary intervention (PCI), and surgery. Medical treatment is useful when the patient is asymptomatic and ARCA is not malignant or in other words is not compressed between the aorta and pulmonary artery (3). Although some studies reported PCI for anomalous RCA arising from LAD, but PCI is not widely used because of single coronary orifice and different anatomical structures in these patients (3). Cardiac surgery is very

important in these patients. Recommended surgical therapies in this anomaly include ostioplasty, bypass graft of the RCA, reimplantation of RCA to the aorta, and pulmonary artery translocation (2, 3). However, the long-term outcome of such therapies is not confirmed.

In conclusion, when RCA is not seen during classic angiography, the physician should keep in mind that RCA can originate from LAD. Anomalous RCA usually stems from proximal or mid-portion of LAD. Current classification cannot exactly determine this anomaly and it needs to be revised. When there is suspicion for coronary anomaly, then performing coronary CTA for better management and planning of therapy can be helpful.

Acknowledgments

None declared.

Footnote

Authors' Contributions: All authors contributed extensively to the work presented in this paper. Seyedeh Adeleh Mirjafari was the corresponding author and helped in all aspects. Mahmoud Beheshti Monfared and Hamid Ghaderi were the cardiac surgeons. Mohammad Forozeshfard was the anesthesiologist. Taraneh Faghihi Langroudi contributed to the radiologic findings. Farshid Heidarpour Kiaie was the technical and material support. Seyedeh Adeleh Mirjafari and Mahnoosh Foroughi prepared the

Table 1. Overview of Published Reports Regarding Patients with Anomalous Origin of the Right Coronary Artery from the Mid-Portion of the Left Anterior Descending Artery

Author/Reference	Publish Year	Age	Sex	Symptom	ECG	Course of RCA	CAD	Treatment
Nath et al. (11)	1987	65	M	Exertional angina	Normal	Anterior to PA	No	Unknown
Nath et al. (11)	1987	54	M	Exertional angina	Precordial ST depression	Anterior to PA	Proximal LAD 75%, RCA 80%	Unknown
Biffani et al. (12)	1991	54	F	Angina at rest	Precordial ST depression	Anterior to PA	No	Unknown
Rath and Battler (13)	1998	77	M	Exertional fatigue	Normal	Anterior to PA	Non-critical stenosis	Medical
Iyisoy et al. (14)	2002	53	M	Angina at rest	Normal	Posterior to PA	No	Unknown
Takano et al. (15)	2003	35	M	Angina	ST-T wave changes	Anterior to PA	Severe LAD stenosis	PCI
Jammula et al. (16)	2005	45	F	Exertional angina	Normal	Not available	Non-critical stenosis	Medical
Saravanan et al. (17)	2006	59	F	Atypical angina	Normal	Anterior to PA	No	Medical
Kamran and Bogal (18)	2006	39	M	Endocarditis	Normal	Anterior to PA	No	Medical
Erdogan et al. (19)	2008	44	F	Angina	Normal	Anterior to PA	Stenosis in circumflex artery	Medical
Bayram et al. (20)	2008	51	M	Angina	Normal	Anterior to PA	Normal	Medical
Hsueh et al. (21)	2009	72	F	Angina	ST-T wave change	Not available	95% LAD stenosis	PCI
Calabro et al. (22)	2009	53	F	Angina	Normal	Not available	LAD stenosis	PCI
Tokmakoglu et al. (2)	2010	66	M	Exertional chest pain	Normal	Anterior to PA	Severe stenosis on ostium of anomalous RCA, mid portion of LAD and circumflex	CABG for three vessel disease
Yurtdas and Gulen (3)	2012	65	M	Chest pain	Normal	Anterior to PA	Non-critical stenosis	Medical
Beheshti Monfared et al. (Present case)	2014	73	M	Chest pain	ST-T elevation	Anterior to PA	Significant lesion in proximal part of LAD, significant long lesion in Diagonal artery and several stenosis in OM	CABG for three vessel disease

Abbreviations: CABG, coronary artery bypass graft; CAD, coronary artery disease; ECG, electrocardiogram; F, female; M, Male; LAD, left anterior descending artery; OM, obtuse marginal; PA, pulmonary artery; RCA, right coronary artery; PCI, percutaneous coronary intervention.

case and helped in the discussion part. All authors contributed to the writing of the manuscript. All authors read and approved the final manuscript.

References

- Lipton MJ, Barry WH, Obrez I, Silverman JF, Wexler L. Isolated single coronary artery: diagnosis, angiographic classification, and clinical significance. *Radiology*. 1979;130(1):39-47. doi: [10.1148/130.1.39](https://doi.org/10.1148/130.1.39). [PubMed: [758666](https://pubmed.ncbi.nlm.nih.gov/758666/)].
- Tokmakoglu H, Bozoglan O, Ozdemir L. Right coronary artery originating from left anterior descending artery: a case report. *J Cardiothorac Surg*. 2010;5:49. doi: [10.1186/1749-8090-5-49](https://doi.org/10.1186/1749-8090-5-49). [PubMed: [20529357](https://pubmed.ncbi.nlm.nih.gov/20529357/)].
- Yurtdas M, Gulen O. Anomalous origin of the right coronary artery from the left anterior descending artery: review of the literature. *Cardiol J*. 2012;19(2):122-9. [PubMed: [22461044](https://pubmed.ncbi.nlm.nih.gov/22461044/)].
- Desmet W, Vanhaecke J, Vrolix M, Van de Werf F, Piessens J, Willems J, et al. Isolated single coronary artery: a review of 50,000 consecutive coronary angiographies. *Eur Heart J*. 1992;13(12):1637-40. [PubMed: [1289093](https://pubmed.ncbi.nlm.nih.gov/1289093/)].
- Shabestari AA, Akhlaghpour S, Tayebivaljozi R, Fattahi Masrouf F. Prevalence of Congenital Coronary Artery Anomalies and Variants in 2697 Consecutive Patients Using 64-Detector Row Coronary CT Angiography. *Iran J Radiol*. 2012;9(3):111-21. doi: [10.5812/iranjradiol.8070](https://doi.org/10.5812/iranjradiol.8070). [PubMed: [23329976](https://pubmed.ncbi.nlm.nih.gov/23329976/)].
- Davis JA, Cecchin F, Jones TK, Portman MA. Major coronary artery anomalies in a pediatric population: incidence and clinical importance. *J Am Coll Cardiol*. 2001;37(2):593-7. [PubMed: [11216984](https://pubmed.ncbi.nlm.nih.gov/11216984/)].
- Zamani J, Mahmmody Y. Anomalous right coronary artery originating from the left main coronary artery. *Int Cardiovasc Res J*. 2009;3(4):217-9.
- Yamanaka O, Hobbs RE. Coronary artery anomalies in 126,595 patients undergoing coronary arteriography. *Cathet Cardiovasc Diagn*. 1990;21(1):28-40. [PubMed: [2208265](https://pubmed.ncbi.nlm.nih.gov/2208265/)].

9. Wilson J, Reda H, Gurley JC. Anomalous right coronary artery originating from the left anterior descending artery: case report and review of the literature. *Int J Cardiol.* 2009;**137**(3):195-8. doi: [10.1016/j.ijcard.2009.03.140](https://doi.org/10.1016/j.ijcard.2009.03.140). [PubMed: [19427707](https://pubmed.ncbi.nlm.nih.gov/19427707/)].
10. Hosoglu Y, Orem C, Ekrem Turan O, Ozturk M, Gedikli O, Hosoglu A, et al. Right coronary artery originated from the left anterior descending artery in a patient with congenital pulmonary valvular stenosis. *Case Rep Cardiol.* 2013;**2013**:413961. doi: [10.1155/2013/413961](https://doi.org/10.1155/2013/413961). [PubMed: [24826286](https://pubmed.ncbi.nlm.nih.gov/24826286/)].
11. Nath A, Kennett JD, Politte LL, Sanfelippo JF, Alpert MA. Anomalous right coronary artery arising from the midportion of the left anterior descending coronary artery—case reports. *Angiology.* 1987;**38**(2 Pt 1):142-6. [PubMed: [3826751](https://pubmed.ncbi.nlm.nih.gov/3826751/)].
12. Biffani G, Lioy E, Loschiavo P, Parma A. Single coronary artery, anomalous origin of the right coronary artery from the left anterior descending artery. *Eur Heart J.* 1991;**12**(12):1326-9. [PubMed: [1778201](https://pubmed.ncbi.nlm.nih.gov/1778201/)].
13. Rath S, Battler A. Anomalous origin of the right coronary artery from the left anterior descending coronary artery. *Catheteriz Cardiovasc Diagn.* 1998;**44**(3):328-9.
14. Iyisoy A, Kursaklioglu H, Barcin C, Barindik N, Kose S, Demirtas E. Single coronary artery with anomalous origin of the right coronary artery as a branch from the left anterior descending artery: a very rare coronary anomaly. *Heart Vessels.* 2002;**16**(4):161-3. [PubMed: [12224788](https://pubmed.ncbi.nlm.nih.gov/12224788/)].
15. Takano M, Seimiya K, Yokoyama S, Okamatsu K, Ishibashi F, Uemura R, et al. Unique single coronary artery with acute myocardial infarction: observation of the culprit lesion by intravascular ultrasound and coronary angiography. *Jpn Heart J.* 2003;**44**(2):271-6. [PubMed: [12718488](https://pubmed.ncbi.nlm.nih.gov/12718488/)].
16. Jammula P, Gupta R, Uretsky BF. Images in cardiology: Anomalous origin of the right coronary artery from the left anterior descending artery. *Heart.* 2005;**91**(4):ee30. doi: [10.1136/hrt.2004.054957](https://doi.org/10.1136/hrt.2004.054957). [PubMed: [15772179](https://pubmed.ncbi.nlm.nih.gov/15772179/)].
17. Saravanan P, Mennim P, Hancock JE. Anomalous origin of right coronary artery from the mid left anterior descending coronary artery. *Heart.* 2006;**92**(9):1212. doi: [10.1136/hrt.2005.078733](https://doi.org/10.1136/hrt.2005.078733). [PubMed: [16908690](https://pubmed.ncbi.nlm.nih.gov/16908690/)].
18. Kamran M, Bogal M. Anomalous right coronary artery originating from the left anterior descending artery. *J Invasive Cardiol.* 2006;**18**(8):E221-2. [PubMed: [16877791](https://pubmed.ncbi.nlm.nih.gov/16877791/)].
19. Erdogan O, Buyuklu M, Aktoz M. Anomalous origin of the right coronary artery from the left anterior descending artery in a patient with single left coronary artery: a rare coronary artery anomaly and review of the literature. *Int J Cardiol.* 2008;**127**(2):280-3. doi: [10.1016/j.ijcard.2007.04.121](https://doi.org/10.1016/j.ijcard.2007.04.121). [PubMed: [17658630](https://pubmed.ncbi.nlm.nih.gov/17658630/)].
20. Bayram E, Kocatürk H, Kantarci M, Fil F, Colak MC. Anomalous origin of the right coronary artery arising from the left anterior descending artery in a case with single coronary artery anomaly: multi-detector computer tomography imaging. *Anadolu Kardiyol Derg.* 2008;**8**(5):385-6. [PubMed: [18849235](https://pubmed.ncbi.nlm.nih.gov/18849235/)].
21. Hsueh SK, Youssef AA, Fang CY. Percutaneous intervention of a stenotic left anterior descending artery with anomalous origin of right coronary artery. *Chang Gung Med J.* 2009;**32**(5):574-8. [PubMed: [19840515](https://pubmed.ncbi.nlm.nih.gov/19840515/)].
22. Calabro P, Bianchi R, Palmieri R, Sordelli C, Bigazzi MC, Calabro R. Evidence of right coronary from mid-left anterior descending coronary: a rare case of coronary anomalous origin. *Eur Heart J.* 2009;**30**(5):565. doi: [10.1093/eurheartj/ehn414](https://doi.org/10.1093/eurheartj/ehn414). [PubMed: [18786915](https://pubmed.ncbi.nlm.nih.gov/18786915/)].
23. Shashanka Mlskdrvv C. Anomalous right coronary artery arising from left anterior descending artery. *J Clin Sci Res.* 2012;**1**(3):144-7.
24. Gulati GS, Naik N, Sharma S, Bisoi AK. Anomalous right coronary artery from the left sinus of valsalva diagnosed by multislice computed tomography. *Indian Heart J.* 2003;**55**(6):663-5. [PubMed: [14989524](https://pubmed.ncbi.nlm.nih.gov/14989524/)].
25. Tchervenkov CI, Pelletier MP, Shum-Tim D, Beland MJ, Rohlicek C. Primary repair minimizing the use of conduits in neonates and infants with tetralogy or double-outlet right ventricle and anomalous coronary arteries. *J Thorac Cardiovasc Surg.* 2000;**119**(2):314-23. doi: [10.1016/S0022-5223\(00\)70187-5](https://doi.org/10.1016/S0022-5223(00)70187-5). [PubMed: [10649207](https://pubmed.ncbi.nlm.nih.gov/10649207/)].
26. Ajami GH, Amirghofran AA, Borzouee M, Navvabi MA, Amoozgar H, Sarikhani S. Coronary Artery Origin Anomalies with Especial Emphasis on Delayed Diagnosis of Anomalous Origin of the Left Coronary Artery from Pulmonary Artery, A report from South of Iran. *Int Cardiovasc Res J.* 2009;**3**(1):43-8.
27. Ojaghi Haghghi Z, Poorzand H, Bassiri HA. Presentation of anomalous origin of the left coronary artery from the pulmonary artery with left sided coronary ostium in an adult patient. *Iran Cardiovasc Res J.* 2009;**3**:109-15.
28. Jo Y, Uranaka Y, Iwaki H, Matsumoto J, Koura T, Negishi K. Sudden cardiac arrest: associated with anomalous origin of the right coronary artery from the left main coronary artery. *Tex Heart Inst J.* 2011;**38**(5):539-43. [PubMed: [22163129](https://pubmed.ncbi.nlm.nih.gov/22163129/)].
29. Taylor AJ, Rogan KM, Virmani R. Sudden cardiac death associated with isolated congenital coronary artery anomalies. *J Am Coll Cardiol.* 1992;**20**(3):640-7. [PubMed: [1512344](https://pubmed.ncbi.nlm.nih.gov/1512344/)].
30. Weigold WG, Abbara S, Achenbach S, Arbab-Zadeh A, Berman D, Carr JJ, et al. Standardized medical terminology for cardiac computed tomography: a report of the Society of Cardiovascular Computed Tomography. *J Cardiovasc Comput Tomogr.* 2011;**5**(3):136-44. doi: [10.1016/j.jcct.2011.04.004](https://doi.org/10.1016/j.jcct.2011.04.004). [PubMed: [21640690](https://pubmed.ncbi.nlm.nih.gov/21640690/)].
31. Pursnani A, Jacobs JE, Saremi F, Levisman J, Makaryus AN, Capunay C, et al. Coronary CTA assessment of coronary anomalies. *J Cardiovasc Comput Tomogr.* 2012;**6**(1):48-59. doi: [10.1016/j.jcct.2011.06.009](https://doi.org/10.1016/j.jcct.2011.06.009). [PubMed: [22264632](https://pubmed.ncbi.nlm.nih.gov/22264632/)].