



# Genomic Analysis of *Enterococcus faecium* from Hospital Soil and Patients: Bridging Community and Hospital Strains

Simiao Duan <sup>1</sup>, Yunbo Chen <sup>1</sup>, Tao Lv <sup>1</sup>, Lisi Zheng <sup>1</sup>, Danhua Zhu <sup>1</sup>, Jianqin He <sup>1,\*</sup>

<sup>1</sup> State Key Laboratory for Diagnosis and Treatment of Infectious Diseases, Collaborative Innovation Center for Diagnosis and Treatment of Infectious Diseases, The First Affiliated Hospital, School of Medicine, Zhejiang University, Hangzhou 310003, China

\*Corresponding Author: State Key Laboratory for Diagnosis and Treatment of Infectious Diseases, Collaborative Innovation Center for Diagnosis and Treatment of Infectious Diseases, The First Affiliated Hospital, School of Medicine, Zhejiang University, Hangzhou 310003, China. Email: 1198015@zju.edu.cn

Received: 29 January, 2025; Revised: 30 April, 2025; Accepted: 15 May, 2025

## Abstract

**Background:** *Enterococcus faecium* is an opportunistic pathogen classified into hospital-associated (HA), community-associated (CA), and Els (formerly clade B, later identified as *E. lactis*) clades. The HA *E. faecium* is linked to clinical infections and antibiotic resistance, with hospital soils serving as potential reservoirs for these resistant pathogens.

**Objectives:** The present study aimed to investigate the phylogenetic relationships, clinical traits, and antibiotic resistance profiles of *E. faecium* strains isolated from hospital soils and patient feces. The goal was to assess the role of hospital soils as a reservoir for resistant *E. faecium* strains and identify similarities and differences between clinical and soil-derived isolates.

**Methods:** A total of 25 *E. faecium* strains from hospital soil and 31 from patient feces were isolated and sequenced. Phylogenetic analysis was performed to categorize strains into HA, CA, and Els clades. Sequence categorization was further refined using HierBAPs. Antimicrobial susceptibility testing assessed resistance profiles. Whole-genome sequencing (WGS) data were analyzed to identify antimicrobial-resistance genes, virulence factors, and replicon distributions. An admixture-based population structure analysis was conducted to evaluate ancestral contributions.

**Results:** Most strains were categorized into HA, CA, or Els clades, with five soil strains forming a distinct "clinical" group. This group shared resistance to ciprofloxacin, penicillin, levofloxacin, ampicillin, and erythromycin with clinical strains. Although the "clinical" group had fewer antibiotic resistance genes (ARGs) than clinical strains, it carried key resistance genes *aac(6')*-*aph(2'')* and *erm(B)*, which were prevalent among clinical isolates. The virulence factor distribution and replicon numbers in the "clinical" group resembled those of HA and soil strains, respectively. Admixture analysis revealed equal contributions from HA and CA clades to the "clinical" group.

**Conclusions:** The "clinical" group of *E. faecium* acts as a transitional group bridging HA and CA clades. Hospital soils serve as reservoirs for resistant *E. faecium* strains and potential dissemination points for HA *E. faecium*. These findings highlight the clinical risks posed by *E. faecium* in hospital soil environments.

**Keywords:** *Enterococcus faecium*, Comparative Genomic Analysis, Antibiotic Resistance Profile, Hospital Soil Environment

## 1. Background

*Enterococcus faecium* is widely distributed in natural environments such as soil and is a normal commensal of the human gut. Initially considered a probiotic (1, 2), it was later recognized as an opportunistic pathogen and removed from the "generally recognized as safe" category (3). Clinically, *E. faecium* can cause severe infections, including bacteremia, urinary tract infections, and endocarditis. As part of the ESKAPE

pathogens (*E. faecium*, *Staphylococcus aureus*, *Klebsiella pneumoniae*, *Acinetobacter baumannii*, *Pseudomonas aeruginosa*, and *Enterobacter* species), a group of bacteria known for their ability to escape the effects of antimicrobial agents, *E. faecium* is known for its antibiotic resistance (4). Among antibiotic-resistant *E. faecium*, vancomycin-resistant *E. faecium* (VREfm) represents a significant public health threat and is included in the high-priority group of the WHO's Bacterial Priority Pathogens List (2024 update); its

Copyright © 2025, Duan et al. This open-access article is available under the Creative Commons Attribution 4.0 (CC BY 4.0) International License (<https://creativecommons.org/licenses/by/4.0/>), which allows for unrestricted use, distribution, and reproduction in any medium, provided that the original work is properly cited.

**How to Cite:** Duan S, Chen Y, Lv T, Zheng L, Zhu D, et al. Genomic Analysis of *Enterococcus faecium* from Hospital Soil and Patients: Bridging Community and Hospital Strains. Jundishapur J Microbiol. 2025; 18 (6): e159860. <https://doi.org/10.5812/jjm-159860>.

prevalence is notably high in certain regions of China (5).

The phylogenetic lineage of *E. faecium* reflects its health risks and association with hospital infections. Phylogenetic analysis categorizes *E. faecium* into three clades: A1, A2, and B (*E. lactis*), with distinct clades showing varying associations with hospital infections. Clade A1 is strongly linked to hospital infections. Research shows that the hospital-associated (HA) clade is generally ampicillin-resistant and exhibits a broader range of antimicrobial resistance compared to the community-associated (CA) clade (6). The HA clade also carries unique sequence variants of microbial surface components involved in matrix adhesion and pilus-encoding genes (7). Colonization-associated proteins (e.g., *hyl*, *ptsD*, *orf1481*) and the genomic plasticity-related sequence IS16 are predominantly found in the HA clade; their distribution can help differentiate clinical *E. faecium* strains (8).

Inter-clade strain interactions and transitions are essential for the formation of the HA clade. Studies suggest that mobile genetic elements (MGEs) carrying antibiotic resistance genes (ARGs) and virulence factors contribute to the genomic plasticity of *E. faecium*, facilitating the emergence and spread of new HA clones in clinical settings (9, 10). Soil serves as a natural habitat for *E. faecium*, with studies indicating that it is the most prevalent *Enterococcus* species isolated from local soils, exhibiting multi-antibiotic resistance and multi-virulence factors, suggesting that soil may act as a transmission point to humans (11). However, the phylogenetic relationship, resistance, and virulence profiles of hospital soil-derived *E. faecium* compared to clinical isolates have not been fully explored. This knowledge gap limits understanding of the potential link between hospital soil *E. faecium* and hospital infections, underestimating its role as a reservoir of HA *E. faecium*.

## 2. Objectives

The present study aims to analyze whole-genome sequencing (WGS), resistance phenotypes, and molecular biological characteristics to identify differences and correlations between hospital soil-derived and clinical HA *E. faecium*. The ultimate goal is to reduce the health risks posed by *E. faecium*.

## 3. Methods

### 3.1. *Enterococcus faecium* Isolates

This study was conducted at the First Affiliated Hospital of Zhejiang University School of Medicine in Hangzhou, China. Soil samples were collected from the hospital's roadside greenbelt at 2 - 3 meter intervals from March 6 - 10, 2023. Approximately 0.5 g of each soil sample was collected, enriched in brain heart infusion broth, and plated on Kenner fecal (KF) *Streptococcus* agar containing sodium azide for incubation at 36°C for 24 hours (12). Suspected colonies with bright red and pink circular appearances were identified using matrix-assisted laser desorption/ionization-time of flight mass spectrometry. Identified *Enterococcus* species were included in the study. Additionally, 31 *E. faecium* strains, isolated from fecal samples of inpatients between September 13, 2010, and September 12, 2019, at the same hospital, were also included.

### 3.2. Antibiotic Susceptibility Test

All isolates underwent antibiotic susceptibility testing (AST) using broth and agar dilution methods based on CLSI guidelines, 33rd edition, 2023 (13). Broth dilution tested vancomycin, teicoplanin, and tigecycline, while agar dilution tested minocycline, tetracycline, ciprofloxacin, levofloxacin, ampicillin, penicillin, erythromycin, rifampicin, linezolid, and chloramphenicol. Results were interpreted according to CLSI parameters, with *E. faecalis* ATCC 29212 as the quality control strain.

### 3.3. Whole-Genome Sequencing, Assembly, and Data Analysis

Genomic DNA was extracted using the FastDNA® Spin Kit for Soil (MP Biomedicals, Illkirch, France). The WGS was performed on the Illumina HiSeq 2500 platform (Illumina, San Diego, CA, USA). The quality of raw sequencing reads was assessed using FastQC v.0.11.5, and adapters were trimmed with Trimmomatic v.0.40 (<https://www.bioinformatics.babraham.ac>) (14). Trimmed reads were assembled de novo with SPAdes v.3.6 (15). Genome annotation was performed using the RAST server (rast.nmpdr.org) and Prokka (16, 17). The Next generation sequencing (NGS) data are available in the NCBI Genome repository under accession number PRJNA1141267, with additional dataset accession numbers listed in Appendix 1 in Supplementary File (available online).

### 3.4. Phylogenetic Analysis

Phylogenetic relationships between hospital soil-derived and clinical *E. faecium* strains were analyzed to validate clade assignments. Fifty-six *E. faecium* strains, along with three reference strains representing the HA

(Efm TX16, GCF\_000174395.2), CA (Efm C59, GCF\_009707505.1), and Els (Efm TX1330, GCF\_003583905.1) clades, were included. Phylogenetic analysis was performed using kSNP4 (18) based on core genome single nucleotide polymorphisms (cgSNP) with default parameters ( $K = 15$ ) to construct a neighbor-joining tree. The tree was visualized using iTOL V6 (19), and annotations from other molecular analyses were integrated. Panaroo v1.1.31 (20) extracted the core genome from all strains, aligned using SNP-sites v2.5.1 (21). A minimum spanning tree (MST) was reconstructed with PHYLOViZ v2.01 and the geoBURST Full MST algorithm (22).

### 3.5. Classification of Sequences

The 56 *E. faecium* strains were grouped based on informative SNPs using RhierBAPS software (23), with a maximum depth of 2 and a maximum of 20 populations. Multi-locus sequence typing (MLST) was performed using the unpublished mlst software by Seemann (<https://github.com/tseemann/mlst>). For strains without sequence type (ST) assignments, new STs were assigned by submitting the sequences to the pubMLST database (24).

### 3.6. Identification of Antibiotic Resistance and Virulence Genes, Plasmids, and Transposons

The ARGs were identified using CGE ResFinder 4.5.0 (25) with a similarity threshold of 90% and a minimum length of 60%. Virulence factor genes were detected using CGE VirulenceFinder 2.0 (26) under the same thresholds for *Enterococcus* and *E. faecium* and *E. lactis*. Plasmid replicons were identified using CGE PlasmidFinder 2.1 (27) with the database set to gram positive. Antibiotic resistance-related MGEs were analyzed using VRprofile2 (28) at the single genome contig level.

### 3.7. Population Structure Analysis

The isolates underwent admixture analysis using ADMIXTURE version 1.3.0 (29). We tested the number of ancestral populations ( $K$ ) from one to six and eventually set it at three. The alignment data were converted to BED format using PLINK 1.90 beta (30).

### 3.8. Statistical Analysis

Statistical analysis was performed using R version 4.4.0; a  $P$ -value  $\leq 0.05$  was considered statistically significant. Data from different groups were compared using the Kruskal-Wallis test.

## 4. Results

### 4.1. Epidemiologic Analysis of *Enterococcus faecium*

Among 320 isolation sites, we identified 25 isolates (Figure 1) of *E. faecium* using MALDI-TOF-MS. The predominant STs were ST555 (five isolates), ST32 (three isolates), ST2608 (three isolates), and ST2609 (three isolates). We identified four new STs: ST2607 (one isolate), ST2608 (three isolates), ST2609 (three isolates), and ST2610 (one isolate). Furthermore, we isolated 31 *E. faecium* strains from patient fecal samples in the same hospital. The MLST analysis showed the predominant STs were ST78 (12 isolates), ST341 (six isolates), ST17 (three isolates), and ST555 (three isolates).

### 4.2. Phylogenetic Analysis and Genomic Characteristics of *Enterococcus faecium*

Phylogenetic relationships of hospital soil-derived and clinical *E. faecium* isolates were analyzed to verify clade distribution. A neighbor-joining tree based on core genome SNPs from 56 isolates and three reference strains was constructed (Figure 2), dividing isolates into three clades: The HA clade reference strain (Efm TX16, GCF\_000174395.2) grouped exclusively with clinical isolates, the CA clade reference strain (Efm C59, GCF\_009707505.1) grouped mainly with soil isolates except for one clinical isolate, and the Els clade reference strain (Efm TX1330, GCF\_003583905.1) grouped within the Els clade. Using RhierBAPS, SNPs were further grouped into four groups (Figure 2). Group 1 (clinical group) included 27 clinical isolates; group 2 (Els group) comprised seven *E. lactis* isolates; and group 3 (soil group) contained 17 isolates, mostly soil-derived (14 soil, three clinical). Five soil strains from group 4, forming a distinct cluster within the clinical clade, were designated the "clinical" group. These strains may represent a transitional component between HA and CA *E. faecium*, potentially persisting in hospital soil while maintaining traits linked to clinical infections. To assess relatedness and transmission between clinical and hospital soil environments, we constructed a MST based on core genome SNPs (Figure 3). Using a threshold of  $\leq 25$  cgSNP alleles to define relatedness (31), we identified six genetically related clusters among 18 clinical isolates and four clusters among 13 soil isolates. No direct transmission between clinical and soil environments was detected; however, the clustering of the clinical' group suggested notable dissemination within the hospital soil environment, impacting both the eastern and western areas.



**Figure 1.** A sketch map of sampling soil sites within the hospital environment. The small black dots represent all sampled sites, while larger dots represent those sites where *Enterococcus faecium* strains were isolated. Genetically linked isolates [core genome single nucleotide polymorphisms (cgSNP) alleles  $\leq 25$ ] are depicted by dots with the same color.

#### 4.3. Antibiotic Susceptibility Results

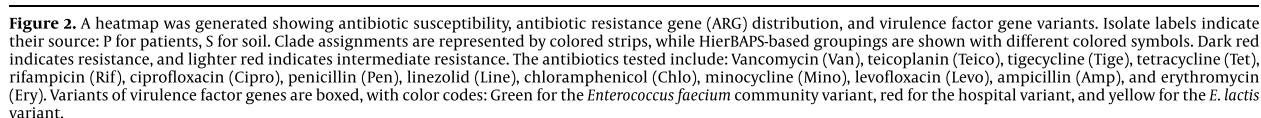
To assess the transitional role of the clinical' group, antibiotic resistance phenotypes of isolates from different sources were compared. The AST revealed that the clinical group exhibited significantly more resistance types than the soil and Els groups ( $7.11 \pm 0.70$ ,  $3.76 \pm 2.11$ ,  $1.43 \pm 1.72$ , and  $P < 0.001$ ) (Figure 4). The clinical group was predominantly resistant to vancomycin, teicoplanin, erythromycin, ciprofloxacin, penicillin, levofloxacin, and ampicillin. Interestingly, the clinical group commonly displayed a resistance profile including ciprofloxacin, penicillin, levofloxacin, ampicillin, and erythromycin, while the soil group isolates showed no such profile. However, the clinical' group carried the same antibiotic resistance profile, only lacking resistance to vancomycin and teicoplanin.

To further distinguish the clinical', clinical, and soil groups, molecular features were analyzed using WGS data. Among 27 types of ARGs detected, the clinical group exhibited significantly more ARGs than the soil and Els groups ( $9.85 \pm 2.11$ ,  $6.53 \pm 2.85$ ,  $2.00 \pm 0.00$ ,  $P < 0.001$ ) (Figure 3). The clinical' group was comparable with the soil group in overall ARG number but had significantly fewer ARGs than the clinical group. However, the clinical' group carried ARGs such as *aac(6')-aph(2'')*, *dfxG*, and *erm(B)*, which were more commonly found in the clinical group. These ARGs likely contribute to the resistance profile shared with the clinical group. Although the clinical' group resembled the soil group in overall ARG number, its possession of certain ARGs typically found in the clinical group was notable.

To determine if ARGs were associated with MGEs, the VRprofile2 database was used. Seven MGEs associated with single resistance genes and one MGE linked to multiple resistance genes were identified. The *aac(6')-aph(2'')* + *IS1216V* combination was the only MGE-associated ARG found in both clinical and soil isolates, specifically represented by soil strains in the clinical' group.

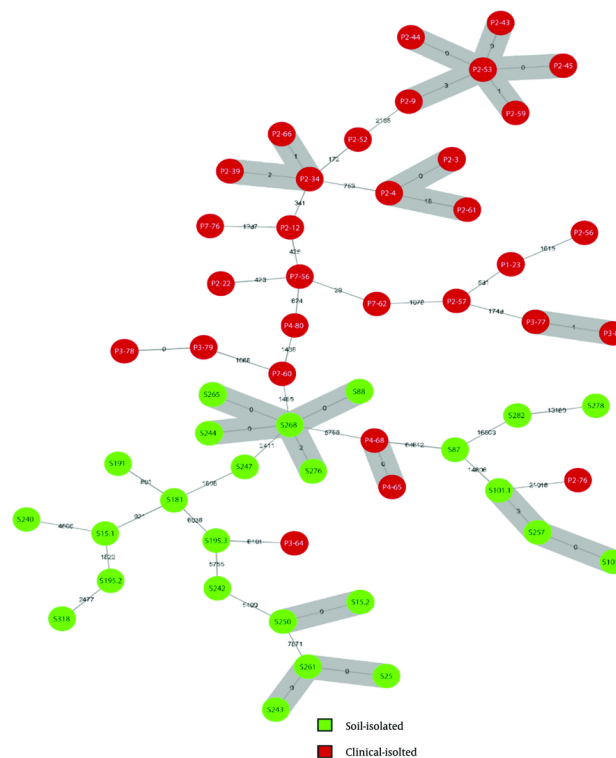
Virulence profiles of HA and CA *E. faecium* clades were compared using VirulenceFinder (Figure 2). Among 30 virulence factor genes, *acm*, *fnm*, *fms-19*, *fms-16*, and *bepA* showed strong source-specificity. Most clinical group strains exhibited HA variants, and soil group strains displayed CA variants, while the Els group exclusively showed Els variants. Similar to the clinical group, the clinical' group exhibited primarily HA variants of these genes, though it carried CA variants for the *acm* gene. No other CA or Els variants were detected. Genes such as *sgrA*, *fms11*, *IS16*, *orf1481*, *ptsD*, and *hyl* were predominantly found in the clinical group, with limited presence in the Els group and almost none in the soil group. The clinical' group carried all these genes except for *ptsD*. Notably, the *ptsD* gene was present in nearly all clinical strains (30/31) but only one soil strain (1/25), demonstrating its specificity for clinical isolates. In the clinical' group, surface and pilus protein sequences were primarily HA variants. This group lacked the *PGC-1* (pilus gene cluster) gene, had an incomplete *PGC-2* gene, and exhibited most HA putative virulence markers (PVMs). The clinical' group's virulence factor distribution closely matched that of the HA group, indicating nearly complete pathogenicity.



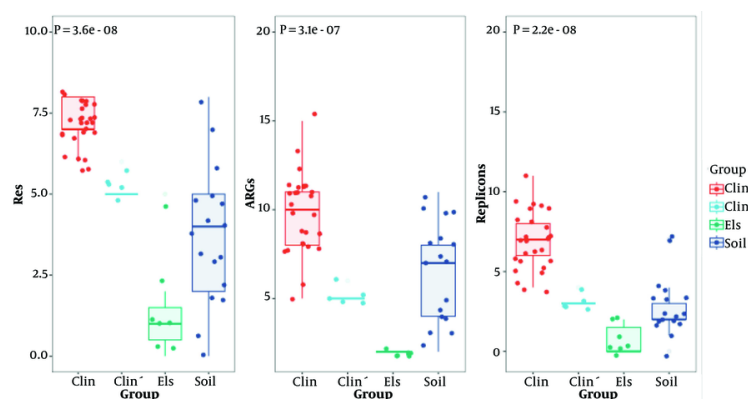


To elucidate the evolutionary contributions of clades of *E. faecium*, we used admixture analysis to define ancestral populations based on genetic characteristics and allocate individuals within the population. Considering the previously discussed clade distributions and sequence groupings, we hypothesized

5



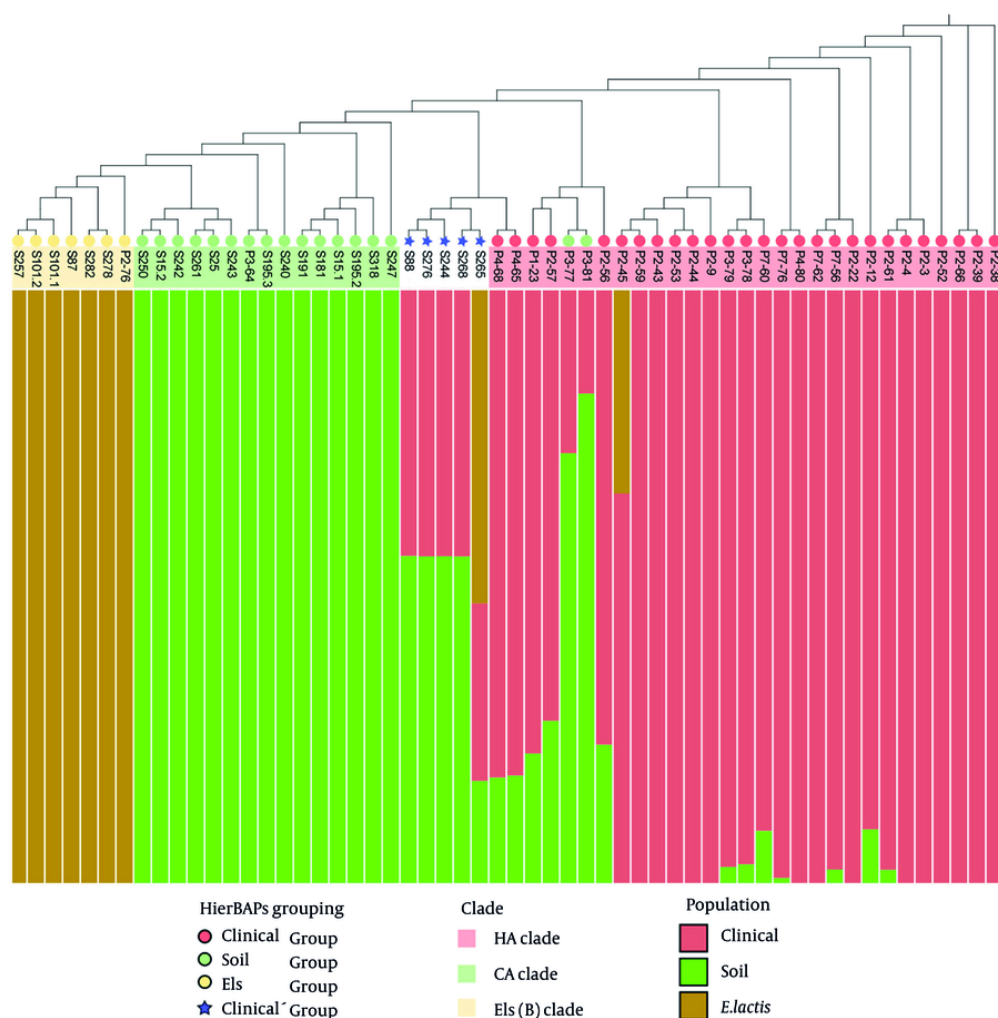
**Figure 3.** The minimum spanning tree (MST) based on core genome SNPs of 56 isolates. Each circle represents an isolate, with green circles representing soil isolates and red circles representing clinical isolates. The numbers between isolates show their core genome single nucleotide polymorphisms (cgSNP) distance. Isolates within the threshold of 25 alleles are considered genetically linked; gray zones were drawn to bridge these isolates.



**Figure 4.** The number of types of antibiotic resistance test outcome, antibiotic-resistance genes, and replicons of each group. P-value is calculated by Kruskal-Wallis test.

in the clinical' group contained comparable clinical and soil ancestral components; one strain had clinical, soil,

and *E. lactis* ancestral components, with nearly equivalent contributions from clinical and soil



**Figure 5.** The population structure graph of 56 isolates. Three ancestral populations were determined: Clinical (pink), soil (green), and *E. lactis* (brown).

ancestries. This further supports the hypothesis that the clinical' group represents a continuum bridging HA and CA *E. faecium* clades.

## 5. Discussion

In this study, clinical isolates of *E. faecium* comprised the HA clade, while isolates from hospital soil environments constituted the CA and Els clades, consistent with common multi-source *E. faecium* phylogenetic distributions. A significant trend was observed with ARGs and replicons in each group decreasing from the clinical group to the soil and Els groups, suggesting that environmental *E. faecium*

isolates have lower resistance rates to antibiotics and fewer overall virulence genes. This supports the association between the role of ARGs and replicons and the clinical adaptation of *E. faecium*.

Considering this association, we explored and identified HA clade-related clinical' group *E. faecium* in hospital soil environments based on their phenotypic and molecular biological comparative analysis. Aligning with the HA clade, the clinical' group is distinguished from the CA clade by its shared resistance spectrum, almost identical virulence profile with the HA clade, and population structure analysis showed that the ancestral components of HA and CA clades contributed equally to

the clinical' group's genetic composition. Previous research has shown that the predecessor of the current vancomycin-resistant *E. faecium* (VREfm) was the HA clade ampicillin-resistant *E. faecium* (AREfm), which evolved into VREfm through horizontal gene transfer of the *van* gene (32). The clinical' group *E. faecium* identified in this study also exhibited ampicillin resistance, a trait absent in the CA clade but predominant in the HA clade. Therefore, we believe that the clinical' group *E. faecium* parallels historical AREfm in characteristics, with the potential of becoming VREfm by acquiring *van* genes during infection or colonization in clinical settings.

The resistance phenotype results suggest that ampicillin resistance is not the only differentiation. This study identified a set of antibiotic resistances present only in the clinical and clinical' groups. We assume that such resistance is essential for colonization in patients amidst exposure to various antibiotics in clinical settings, conferring an advantage and resilience against elimination during subsequent treatments. Soil strains lack this uniform resistance distribution, highlighting its significance in the evolutionary adaptation from the CA to the HA *E. faecium* clades. Notably, the distribution of soil-derived strain clusters in the MST indicates cross-regional transmission in hospital soil, with three clusters, including the clinical' group, spanning from the east to the west of the hospital. This proves that soil *E. faecium* can traverse long distances with carrier assistance and re-establish in new soil, posing potential health risks due to their similarity to HA *E. faecium*.

Soil is recognized as a reservoir for ARG-carrying pathogens (33). Likewise, soil-dwelling *E. faecium* can accept resistance genes like *tet(M)*, *erm(B)*, *erm(Q)*, and *mef(A)* from *Clostridium perfringens*, demonstrating that resistance genes in soil can transfer to *Enterococcus* species (34). Their ability to exchange mobile elements with other soil bacteria may enable *E. faecium* to acquire resistance phenotypes or other clinically rare traits. In this study, the mobile element IS1216V combined with the resistance gene *aac(6')-aph(2'')* in the clinical and clinical' groups may be involved in such processes. Compared to the clinical' and soil groups, the greater diversity of replicons in the clinical group may contribute to or result from its ultimate adaptation to clinical environments. The clinical' group potentially evolves into HA *E. faecium* by acquiring HA mobile elements through infection or colonization in clinical settings or soil environments.

Studies indicate that genetic exchange across *E. faecium* clades predominantly occurs from clade B (Els clade) or clade A2 (soil clade) to clade A1 (clinical clade)

(10). This explains why the HA clade contains ancestral components from the other two clades, while these two clades lack HA clade components. We acknowledge that the 13-year time interval between clinical and hospital soil isolates may introduce temporal confounders when comparing resistance profiles. However, longitudinal surveillance studies have demonstrated that the resistome of *E. faecium*, particularly hospital-adapted strains, remains relatively stable over time. For example, surveillance data from Italy showed minimal fluctuations in resistance rates to key antibiotics such as ampicillin, linezolid, teicoplanin, tigecycline, and vancomycin across multiple years (35). Similarly, national data from China's BRICS program (2016 - 2022) (36-40) confirmed consistent resistance rates for these agents among clinical *E. faecium* isolates. Within our own dataset, we found no significant differences in resistance phenotypes or resistance gene profiles among patient-derived isolates collected between 2010 and 2019. This internal consistency suggests that, at least within the studied hospital setting, the confounding effect of temporal separation is likely minimal.

We also acknowledge that bacterial resistance mechanisms are dynamic, and that CLSI guidelines for antimicrobial susceptibility testing are updated annually to reflect these changes. However, the antibiotics selected in this study – including ampicillin, penicillin, ciprofloxacin, levofloxacin, erythromycin, vancomycin, and teicoplanin – have consistently remained among the primary agents for *E. faecium* susceptibility testing over the past decade. Consequently, despite the time interval between patient and soil isolate collections, the major resistance phenotypes compared in this study reflect stable and clinically relevant antibiotic targets. Moreover, our analysis focused on well-established resistance traits rather than newly emerging or rare mechanisms, minimizing the confounding impact of evolving resistance patterns on the validity of our comparisons.

### 5.1. Conclusions

In conclusion, we isolated five transitional strains from the hospital soil environment. Comparative analyses of resistance phenotypes, ARG distribution, and virulence profiles demonstrate that these strains are transitional between HA and CA *E. faecium* clades, suggesting their potential for clinical infection. Population structure analysis further showed that the HA and CA clades contributed equally to the ancestral components of the clinical' group, making it a continuum bridging the two clades. The emergence of



the clinical' group supports the adaptive transformation process between CA and HA clades and demonstrates that hospital soil environments are not as safe as previously thought. Clinically hazardous *E. faecium* can adapt to and exploit the hospital soil as a reservoir, facilitating its spread over long distances within hospital environments.

## Supplementary Material

Supplementary material(s) is available [here](#) [To read supplementary materials, please refer to the journal website and open PDF/HTML].

## Footnotes

**Authors' Contribution:** Study concept and design: S. D., Y. C., and J. H.; Acquisition of data: S. D., L. Z., D. Z., and T. L.; Analysis and interpretation of data: S. D., T. L., Y. C., and J. H.; Drafting of the manuscript: S. D.; Critical revision of the manuscript for important intellectual content: Y. C. and J. H.; Statistical analysis: S. D. and T. L.; Administrative, technical, and material support: S. D., L. Z., D. Z., and T. L. Study supervision: Y. C. and J. H.

**Conflict of Interests Statement:** The authors declare no conflict of interests.

**Data Availability:** Next generation sequencing data generated in the study are available in NCBI genome repository under accession number PRJNA1141267 and the accession numbers for all data sets used are provided in Appendix 1 in Supplementary File (available in the online version of this article).

**Funding/Support:** This study was supported by National Key R&D Program of China (2020YFE0204300). The funders had no role in study design, data collection and analysis, decision to publish and preparation of the manuscript, and the findings do not necessarily reflect the views and policies of the authors' institutions and funders.

## References

- Byappanahalli MN, Nevers MB, Korajkic A, Staley ZR, Harwood VJ. Enterococci in the environment. *Microbiol Mol Biol Rev.* 2012;**76**(4):685-706. [PubMed ID: 23204362]. [PubMed Central ID: PMC3510518]. <https://doi.org/10.1128/MMBR.00023-12>.
- Carey SA, Goldstein RE, Gibbs SG, Claye E, He X, Sapkota AR. Occurrence of vancomycin-resistant and -susceptible Enterococcus spp. in reclaimed water used for spray irrigation. *Environ Res.* 2016;**147**:350-5. [PubMed ID: 26942838]. [PubMed Central ID: PMC8223762]. <https://doi.org/10.1016/j.envres.2016.02.030>.
- Nallapareddy SR, Singh KV, Murray BE. Contribution of the collagen adhesin Acm to pathogenesis of Enterococcus faecium in experimental endocarditis. *Infect Immun.* 2008;**76**(9):4120-8. [PubMed ID: 18591236]. [PubMed Central ID: PMC2519397]. <https://doi.org/10.1128/IAI.00376-08>.
- Denissen J, Reyneke B, Waso-Reyneke M, Havenga B, Barnard T, Khan S, et al. Prevalence of ESKAPE pathogens in the environment: Antibiotic resistance status, community-acquired infection and risk to human health. *Int J Hyg Environ Health.* 2022;**244**:114006. [PubMed ID: 35841823]. <https://doi.org/10.1016/j.ijheh.2022.114006>.
- Luo Q, Lu P, Chen Y, Shen P, Zheng B, Ji J, et al. ESKAPE in China: Epidemiology and characteristics of antibiotic resistance. *Emerg Microbes Infect.* 2024;**13**(1):2317915. [PubMed ID: 38356197]. [PubMed Central ID: PMC10896150]. <https://doi.org/10.1080/22221751.2024.2317915>.
- Lebreton F, van Schaik W, McGuire AM, Godfrey P, Griggs A, Mazumdar V, et al. Emergence of epidemic multidrug-resistant Enterococcus faecium from animal and commensal strains. *mBio.* 2013;**4**(4). [PubMed ID: 23963180]. [PubMed Central ID: PMC3747589]. <https://doi.org/10.1128/mBio.00534-13>.
- Qin X, Galloway-Pena JR, Sillanpaa J, Roh JH, Nallapareddy SR, Chowdhury S, et al. Complete genome sequence of Enterococcus faecium strain TX16 and comparative genomic analysis of Enterococcus faecium genomes. *BMC Microbiol.* 2012;**12**:135. [PubMed ID: 22769602]. [PubMed Central ID: PMC3433357]. <https://doi.org/10.1186/1471-2180-12-135>.
- Freitas AR, Tedim AP, Novais C, Coque TM, Peixe L. Distribution of putative virulence markers in Enterococcus faecium: Towards a safety profile review. *J Antimicrob Chemother.* 2018;**73**(2):306-19. [PubMed ID: 29149293]. <https://doi.org/10.1093/jac/dkx387>.
- Sanderson H, Gray KL, Manuele A, Maguire F, Khan A, Liu C, et al. Exploring the mobilome and resistome of Enterococcus faecium in a One Health context across two continents. *Microb Genom.* 2022;**8**(9). [PubMed ID: 36129737]. [PubMed Central ID: PMC9676038]. <https://doi.org/10.1099/mgen.0.000880>.
- van Hal SJ, Willems RJL, Gouliouris T, Ballard SA, Coque TM, Hammerum AM, et al. The interplay between community and hospital Enterococcus faecium clones within health-care settings: A genomic analysis. *Lancet Microbe.* 2022;**3**(2):e133-41. [PubMed ID: 35146465]. [PubMed Central ID: PMC8810393]. [https://doi.org/10.1016/S2666-5247\(21\)00236-6](https://doi.org/10.1016/S2666-5247(21)00236-6).
- Ali SA, Bin-Asif H, Hasan KA, Rehman M, Abbasi A. Molecular assessment of virulence determinants, hospital associated marker (ISI6gene) and prevalence of antibiotic resistance in soil borne Enterococcus species. *Microb Pathog.* 2017;**105**:298-306. [PubMed ID: 28258002]. <https://doi.org/10.1016/j.micpath.2017.02.041>.
- Domig KJ, Mayer HK, Kneifel W. Methods used for the isolation, enumeration, characterisation and identification of Enterococcus spp. 1. Media for isolation and enumeration. *Int J Food Microbiol.* 2003;**88**(2-3):147-64. [PubMed ID: 14596987]. [https://doi.org/10.1016/S0168-1605\(03\)00177-6](https://doi.org/10.1016/S0168-1605(03)00177-6).
- Clinical and Laboratory Standards Institute. *Performance standards for antimicrobial susceptibility testing.* Clinical and Laboratory Standards Institute; 2023. Available from: <http://clsi.org/about/news/clsi-publishes-m100-performance-standards-for-antimicrobial-susceptibility-testing-33rd-edition/>.
- Bolger AM, Lohse M, Usadel B. Trimmomatic: A flexible trimmer for Illumina sequence data. *Bioinformatics.* 2014;**30**(15):2114-20. [PubMed ID: 24695404]. [PubMed Central ID: PMC4103590]. <https://doi.org/10.1093/bioinformatics/btu170>.
- Nurk S, Bankevich A, Antipov D, Gurevich AA, Korobeynikov A, Lapidus A, et al. Assembling single-cell genomes and mini-metagenomes from chimeric MDA products. *J Comput Biol.*

- 2013;**20**(10):714-37. [PubMed ID: [24093227](#)]. [PubMed Central ID: [PMC3791033](#)]. <https://doi.org/10.1089/cmb.2013.0084>.
16. Aziz RK, Bartels D, Best AA, DeJongh M, Disz T, Edwards RA, et al. The RAST server: Rapid annotations using subsystems technology. *BMC Genomics*. 2008;**9**:75. [PubMed ID: [18261238](#)]. [PubMed Central ID: [PMC2265698](#)]. <https://doi.org/10.1186/1471-2164-9-75>.
17. Seemann T. Prokka: Rapid prokaryotic genome annotation. *Bioinformatics*. 2014;**30**(14):2068-9. [PubMed ID: [24642063](#)]. <https://doi.org/10.1093/bioinformatics/btu153>.
18. Hall BG, Nisbet J. Building phylogenetic trees from genome sequences with kSNP4. *Mol Biol Evol*. 2023;**40**(11). [PubMed ID: [37948764](#)]. [PubMed Central ID: [PMC10640685](#)]. <https://doi.org/10.1093/molbev/msad235>.
19. Letunic I, Bork P. Interactive tree of life (iTOL) v6: Recent updates to the phylogenetic tree display and annotation tool. *Nucleic Acids Res*. 2024;**52**(W1):W78-82. [PubMed ID: [38613393](#)]. [PubMed Central ID: [PMC11223838](#)]. <https://doi.org/10.1093/nar/gkac268>.
20. Tonkin-Hill G, MacAlasdair N, Ruis C, Weimann A, Horesh G, Lees JA, et al. Producing polished prokaryotic pangenomes with the Panaroo pipeline. *Genome Biol*. 2020;**21**(1):180. [PubMed ID: [32698896](#)]. [PubMed Central ID: [PMC7376924](#)]. <https://doi.org/10.1186/s13059-020-02090-4>.
21. Page AJ, Taylor B, Delaney AJ, Soares J, Seemann T, Keane JA, et al. SNP-sites: Rapid efficient extraction of SNPs from multi-FASTA alignments. *Microbial Genomics*. 2016;**2**(4). <https://doi.org/10.1099/mgen.0.000056>.
22. Nascimento M, Sousa A, Ramirez M, Francisco AP, Carrico JA, Vaz C. PHYLOVIZ 2.0: Providing scalable data integration and visualization for multiple phylogenetic inference methods. *Bioinformatics*. 2017;**33**(1):128-9. [PubMed ID: [27605102](#)]. <https://doi.org/10.1093/bioinformatics/btw582>.
23. Tonkin-Hill G, Lees JA, Bentley SD, Frost SDW, Corander J, RhiherBAPS: An R implementation of the population clustering algorithm hierBAPS. *Wellcome Open Res*. 2018;**3**:93. [PubMed ID: [30345380](#)]. [PubMed Central ID: [PMC6178908](#)]. <https://doi.org/10.12688/wellcomeopenres.14694.1>.
24. Jolley KA, Bray JE, Maiden MCJ. Open-access bacterial population genomics: BIGSdb software, the PubMLST.org website and their applications. *Wellcome Open Res*. 2018;**3**:124. [PubMed ID: [30345391](#)]. [PubMed Central ID: [PMC6192448](#)]. <https://doi.org/10.12688/wellcomeopenres.14826.1>.
25. Bortolaia V, Kaas RS, Ruppe E, Roberts MC, Schwarz S, Cattori V, et al. ResFinder 4.0 for predictions of phenotypes from genotypes. *J Antimicrob Chemother*. 2020;**75**(12):3491-500. [PubMed ID: [32780112](#)]. [PubMed Central ID: [PMC7662176](#)]. <https://doi.org/10.1093/jac/dkaa345>.
26. Roer L, Kaya H, Tedim AP, Novais C, Coque TM, Aarestrup FM, et al. VirulenceFinder for Enterococcus faecium and Enterococcus lactis: An enhanced database for detection of putative virulence markers by using whole-genome sequencing data. *Microbiol Spectr*. 2024;**12**(3):e0372423. [PubMed ID: [38329344](#)]. [PubMed Central ID: [PMC10913372](#)]. <https://doi.org/10.1128/spectrum.03724-23>.
27. Carattoli A, Zankari E, Garcia-Fernandez A, Voldby Larsen M, Lund O, Villa L, et al. In silico detection and typing of plasmids using PlasmidFinder and plasmid multilocus sequence typing. *Antimicrob Agents Chemother*. 2014;**58**(7):3895-903. [PubMed ID: [24777092](#)]. [PubMed Central ID: [PMC4068535](#)]. <https://doi.org/10.1128/AAC.02412-14>.
28. Wang M, Goh YX, Tai C, Wang H, Deng Z, Ou HY. VRprofile2: Detection of antibiotic resistance-associated mobilome in bacterial pathogens. *Nucleic Acids Res*. 2022;**50**(W1):W768-73. [PubMed ID: [35524563](#)]. [PubMed Central ID: [PMC9252795](#)]. <https://doi.org/10.1093/nar/gkac321>.
29. Alexander DH, Novembre J, Lange K. Fast model-based estimation of ancestry in unrelated individuals. *Genome Res*. 2009;**19**(9):1655-64. [PubMed ID: [19648217](#)]. [PubMed Central ID: [PMC2752134](#)]. <https://doi.org/10.1101/gr.094052.109>.
30. Purcell S, Neale B, Todd-Brown K, Thomas L, Ferreira MA, Bender D, et al. PLINK: A tool set for whole-genome association and population-based linkage analyses. *Am J Hum Genet*. 2007;**81**(3):559-75. [PubMed ID: [17701901](#)]. [PubMed Central ID: [PMC1950838](#)]. <https://doi.org/10.1086/519795>.
31. Higgs C, Sherry NL, Seemann T, Horan K, Walpole H, Kinsella P, et al. Optimising genomic approaches for identifying vancomycin-resistant Enterococcus faecium transmission in healthcare settings. *Nat Commun*. 2022;**13**(1):509. [PubMed ID: [35082278](#)]. [PubMed Central ID: [PMC8792028](#)]. <https://doi.org/10.1038/s41467-022-28156-4>.
32. Grayson ML, Eliopoulos GM, Wennersten CB, Ruoff KL, De Girolami PC, Ferraro MJ, et al. Increasing resistance to beta-lactam antibiotics among clinical isolates of Enterococcus faecium: A 22-year review at one institution. *Antimicrob Agents Chemother*. 1991;**35**(11):2180-4. [PubMed ID: [1803989](#)]. [PubMed Central ID: [PMC245356](#)]. <https://doi.org/10.1128/AAC.35.11.2180>.
33. Wang B, Xu J, Wang Y, Stirling E, Zhao K, Lu C, et al. Tackling soil ARG-carrying pathogens with Global-Scale metagenomics. *Adv Sci (Weinh)*. 2023;**10**(26):e2301980. [PubMed ID: [37424042](#)]. [PubMed Central ID: [PMC10502870](#)]. <https://doi.org/10.1002/advs.202301980>.
34. Soge OO, Tivoli LD, Meschke JS, Roberts MC. A conjugative macrolide resistance gene, mef(A), in environmental Clostridium perfringens carrying multiple macrolide and/or tetracycline resistance genes. *J Appl Microbiol*. 2009;**106**(1):34-40. [PubMed ID: [19120611](#)]. <https://doi.org/10.1111/j.1365-2672.2008.03960.x>.
35. Boccella M, Santella B, Pagliano P, De Filippis A, Casolaro V, Galdiero M, et al. Prevalence and antimicrobial resistance of Enterococcus species: A retrospective cohort study in Italy. *Antibiotics (Basel)*. 2021;**10**(12). [PubMed ID: [34943764](#)]. [PubMed Central ID: [PMC8698357](#)]. <https://doi.org/10.3390/antibiotics10121552>.
36. Chen Y, Ji J, Ying C, Wang P, Yang Q, Kong H, et al. BRICS report of 2016-2017: The distribution and antimicrobial resistance profile of clinical isolates from blood culture in China. *Chinese J Clin Infect Dis*. 2020;**13**(1):42-54.
37. Chen Y, Ji J, Ying C, Wang P, Liu Z, Yang Q, et al. BRICS report of 2018-2019: The distribution and antimicrobial resistance profile of clinical isolates from blood culture in China. *Chinese J Clin Infect Dis*. 2021;**14**(1):32-45.
38. Chen Y, Ji J, Ying C, Liu Z, Yang Q, Kong H, et al. BRICS report of 2020: The bacterial composition and antimicrobial resistance profile of clinical isolates from bloodstream infections in China. *Chinese J Clin Infect Dis*. 2021;**14**(6):413-26.
39. Liu Z, Chen Y, Ji J, Ying C, Yang Q, Kong H, et al. National bloodstream infection bacterial resistance surveillance report (2022): Gram-negative bacteria. *Chinese J Clin Infect Dis*. 2024;**17**(2):42-57.
40. Chen Y, Ji J, Liu Z, Ying C, Yang Q, Kong H, et al. BRICS report of 2021: the distribution and antimicrobial resistance profile of clinical bacterial isolates from blood stream infections in China. *Chinese J Clin Infect Dis*. 2023;**16**(1):33-47.