



Monitoring of Element Changes During in-Vessel Composting for Removal of Total Petroleum Hydrocarbons from Oily Acidic Sludge

Ali Reza Asgari^{1,2}, Ramin Nabizadeh¹, Amir Hossein Mahvi^{1,2}, Simin Naseri^{1,3}, Mohammad Hadi Dehghani¹, Shahrokh Nazmara¹ and Kamyar Yaghmaeian^{1,2,*}

¹Department of Environmental Health Engineering, School of Public Health, Tehran University of Medical Sciences, Tehran, Iran

²Center for Solid Waste Research, Institute for Environmental Research, Tehran University of Medical Sciences, Tehran, Iran

³Center for Water Quality Research (CWQR), Institute for Environmental Research (IER), Tehran University of Medical Sciences, Tehran

*Corresponding author: Center for Solid Waste Research, Institute for Environmental Research, Tehran University of Medical Sciences, Tehran, Iran. Tel: +98-9123311992, Fax: +98-2188978397, Email: kyaghmaeian@gmail.com

Received 2017 January 14; Revised 2017 May 27; Accepted 2017 June 30.

Abstract

Background: Oily acidic sludge (OAS) from re-refineries has a high concentration of total petroleum hydrocarbons (TPH), elements, and heavy metals.

Objectives: This research investigated the monitoring of elements during in-vessel composting of OAS with urban immature compost.

Methods: This experimental study was conducted as a batch mode in a plastic container (500 mL). The ratios of OAS to compost were 1:0 (as control), 1:5 to 100 (as dry basis) at a C:N:P ratio of 100:5:1, and with 45% - 65% moisture content for 70 days. The elements Zn, Cu, Fe, Mo, B, Mn, Al, Pb, Cr, Sn, Ni, Li, V, As, Cd, Co, and Hg were monitored every week.

Results: The highest and lowest total petroleum hydrocarbons (TPH) removals were observed in mixing ratios of 1:5 (71.6%) and 1:100 (48.6%), respectively. The amount of Zn, Cu, Fe, Al, and B in OAS was very high. Element analyses after mixing OAS with immature compost showed that the initial concentrations of the elements had decreased. ANOVA test results showed that the changes in time were not effective on the average concentrations of elements ($P = 0.99$).

Conclusions: According to the obtained results, the mixing ratio of 10:1 can be selected as the preferred choice for removing TPH and reduce elements' concentrations.

Keywords: Element Changes, Oily Acidic Sludge, In-Vessel Composting, Total Petroleum Hydrocarbons

1. Background

Concerns regarding health and environment, especially the safe disposal of industrial and hazardous waste, have been the topic of current interest in developing countries (1-3). Non-biodegradability of heavy metals and other metal elements in the environment can lead to be addressed for protecting the ecosystem (4-6). Industrial and hazardous waste like oily acidic sludge and oily sludge from refineries and re-refineries facilities are the main sources of pollution in some industrial zones in Iran. The final products of some facilities and industries are engine, lubricant, flux and hydraulic oil, and wastes like oily acidic sludge and filter cake (7). These wastes include a high concentration of volatile organic carbon (VOC), total petroleum hydrocarbon (TPH) and other materials that were enhanced to the oil during the initial processes (8, 9). Intentional and/or accidental discharge of these haz-

ardous wastes into the environment, including soil and water resources, have caused some negative effects on the environment as well as human health due to different pollutants such as TPH, heavy metals and other elements in the air, and leakage of the contaminants in groundwater and soil (10). Oily sludge resulted from Re-refinery Industries contain hazardous materials that are recognized as an immunotoxicant and carcinogen agents. The acidity of the oily sludge was used in old wax refining methods in the refinery. Composting has been considered as a cost-effective and environmentally friendly method for biodegrading some wastes in the past few years (7). Aerated in-vessel composting is a technology that can easily check environmental parameters such as temperature, pH, oxygen required, nutrients, moisture content, oxidation-reduction potential, and mixing ratio. In-vessel systems need high initial investments, however, they require less space and provide better control than windrow systems;

the final product by this method is more valuable (11). Composting technology has been widely applied for treating and biodegrading many types of waste such as PAHs, chlorophenols compounds, explosive materials, and polychlorobiphenyls (PCBs) (12). Simplicity, low cost, odor control, and low time reaction required for pollutant degradation are the most important advantage of this process (12). Co-composting of sludge oil and other materials and wastes is the most important characteristic of In-vessel composting.

2. Objectives

This study aimed to use in-vessel composting (effects of various environmental) factors for reducing TPH from OAS from the re-refineries industries.

3. Methods

3.1. Sampling

The present work was the experimental study that was conducted on the batch system. OAS samples were taken from refinery industry at Eshtehard industrial town (south west of Alborz province), according to the sampling protocol (13). In addition, the immature compost was provided from the Tehran composting plant (May to September, 2017 (spring and summer)). The composite composting samples were collected from first week of the composting time and various depths and then, additional materials like glass were segregated from the main mixed samples. Next, the samples were crushed to reach a size of two cm and mixed with dry manure (5% w/w) to provide required microorganisms (14).

3.2. Pilot Features

In-vessel composting reactors were plastic containers (500 mL) that were equipped to an oxygen blower, thermometer, and water supply. Diaphragm pumps (Model ACO 5505, Hailea, Guangdong, China) and distribution system was used to provide the same amount of air for each container; the amount of effluent air to each container was 20 mL/min.

3.3. Design of Experiments

3.3.1. OAS Ratio to Immature Compost

First, various ratios of OAS to compost (1:5, 1:8, 1:10, 1:15, 1:20, 1:30, 1:40, 1:50, 1:75, and 1:100) were provided and two reactors (with OAS to compost ratio was 1:0) were used for controlling the process. In addition, HgCl_2 (2%) was added as biocide to one reactor, while the other reactor had no additive. The effect of aeration and volatilization

process to reduce the TPH was determined in these reactors through the aeration of samples. The adaptation time to prevent the shock related to toxic materials was considered 20 days. After the passing of adaptation time, OAS was gradually injected to the reactors one time in each five days. HgCl_2 was used to avoid of biological activities in the reactor.

3.3.2. Adjustment of Nutrients and Moisture Content

Nitrogen (N), phosphorus (P), and carbon (C) were formulated as 1:5:100 using NH_4Cl (99.9%, Sigma-Aldrich, St. Louis, MO) as a source of N and KH_2PO_4 (99.5%, Sigma-Aldrich) as a source of P. The moisture content in all reactors was kept 45% to 65% duration of the composting process.

3.3.3. Analytical Methods

Before the sampling, the reactor contents were completely blended and the samples were collected in different depths. The samples were prepared with addition of 4 mL of n-hexane (99.9%, Merck, Darmstadt, Germany) 1 g of dry sample. Then, to achieve the uniform samples, the papered mixed was agitated for one minute at 300 rpm and finally the deposited particles were maintained at a refrigerator at 4°C until the analysis. GC-FID (Model CP-3800, Varian, Belrose, Australia) was used to measure the TPH. In addition, mercury thermometers and laboratory pH meter (Model, Portable Meter, Germany) were daily employed to determine the temperature and pH, respectively. To detecting pH samples at the laboratory, 1 g of dry sample was agitated in 5 mL of distilled water for one min and 200 rpm and then the supernatant was separated (13). For determining the element fluctuations during the composting process, 2 g of mixing sample was dried at 105°C for 24 hours. ICP device (Model ARCOS FHE12, Spectro, Kleve, Germany) and digestion method by nitric acid digestion was used to measure the elements (15).

4. Results and Discussion

4.1. Characteristics of OAS and Immature Compost as a Preliminary Analysis

OAS and the immature compost characteristics are presented in Table 1. As is evident from the table, TPH include more than 50% of the OAS by mass, and the pH in the obtained samples were extremely acidic ($\text{pH} = 1.35$). It shows that waste petroleum and acidic pH are the main issues related to the discharging these wastes to the environment. Other studies showed that the TPH contents of oily sludge were 5% to 86.2% by mass (often in the range of 15% to 50%) (10).

Table 1. Physicochemical Properties of the Filter Cake and Compost

Parameter	Unit	Acidic Sludge	Unmaturated Compost
Organic carbon (OC)	g.kg ⁻¹	539.3	240
TKN	g.kg ⁻¹	10.0	4.61
TP	g.kg ⁻¹	2.19	2.09
pH	-	1.41	7.31
Moisture content	%	10.6	46.0
TPH	g.kg ⁻¹	520	N.D
C:N ratio	-	54.0	52.0

Table 2 shows the changes of the element concentrations in the OAS. It clears that the concentration of Zn, Cu, Fe, Al, and B in the OAS was very high and exceeded from 1000 mg.kg⁻¹. In addition, Mo, Pb, and Mn concentrations were fairly high (between 100 - 1000 mg.kg⁻¹). The concentration of Ni, Cr, Sn, and Li were between 47 to 69 mg.kg⁻¹, and the concentration of other elements was less than 10 mg.kg⁻¹. The high concentration of elements may be related to the oil interaction in the engine as well as the main source of oil. High concentrations of the elements in the oily sludge was reported in previous studies (10, 13).

Table 2. Elemental Analysis of OAS Used in This Study

Element	Unit	Concentration
Zn	g.kg ⁻¹	5.22
Cu	g.kg ⁻¹	4.42
Fe	g.kg ⁻¹	5.53
Al	g.kg ⁻¹	2.73
B	g.kg ⁻¹	1.36
Mn	g.kg ⁻¹	0.39
Mo	g.kg ⁻¹	0.29
Pb	g.kg ⁻¹	0.19
Cr	mg.kg ⁻¹	69.1
Sn	mg.kg ⁻¹	58.6
Ni	mg.kg ⁻¹	56.0
Li	mg.kg ⁻¹	47.9
V	mg.kg ⁻¹	8.28
As	mg.kg ⁻¹	4.96
Cd	mg.kg ⁻¹	4.44
Co	mg.kg ⁻¹	3.78
Hg	mg.kg ⁻¹	3.49

4.2. TPH Removal in Composting Reactors

TPH removal efficiency during the composting period are shown in Table 3. According to the results, the highest and lowest concentration of TPH at adaptation time after 10 weeks was obtained in the sludge to compost ratio of 1:5 and 1:100, respectively. It means that 83.9 and 2.80 g of the TPH were removed. Decreasing the removal efficiency of the biodegradation process was more than 48% in all reactors; however, the highest removal efficiency was obtained in the sludge to compost ratio of 1:5 and 1:8 that was 71.6% 70.6%. The maximum removal efficiency compared to the initial amount that actually occurred within the first three weeks indicates that the high amount the hydrocarbons (mainly saturated fractions) was decomposed. Figure 1 illustrates the changes of TPH removal efficiency during the composting process. The minimum TPH removal efficiency was obtained at a mixing ratio of 1:100 (48.5%).

The TPH removal efficiency was higher than 60% at mixing ratios of less than 1:10 and 48.5% to 58.3% for mixing ratios of more than 1:10. Thus, the effects of mixing ratios on the removal of organic compounds and TPH was significant. These results are similar to previous studies (8, 12, 13). The results also revealed that the mixing ratios of more than 1:10 need further compost to mitigate the contamination. In addition, the removal efficiency of TPH at the mixing ratios of more than 1:10 increase insignificantly in comparison with less than 1:10. Therefore, increasing organic amendment will reduce efficiency of TPH reduction (16).

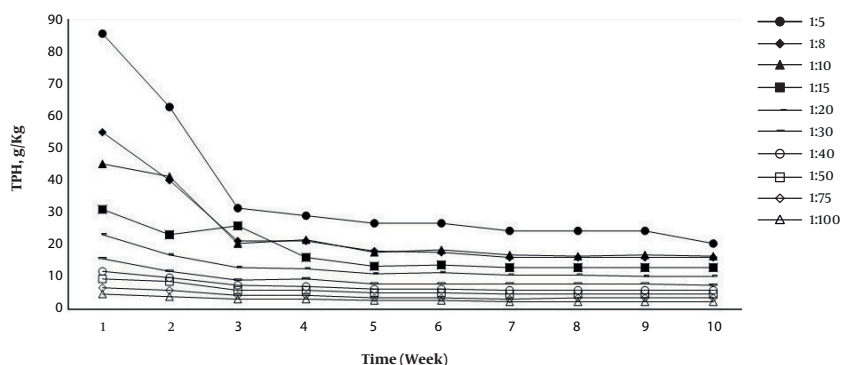
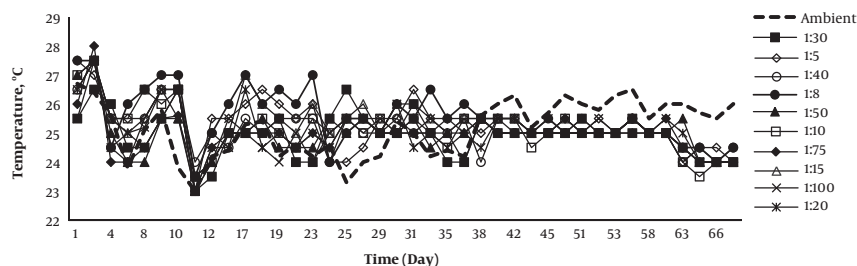
4.3. Monitoring Parameters (pH and Temperature)

Figures 2 and 3 represent the temperature and pH monitoring for the 10 weeks of experiments. The reactor temperature was above the ambient in the first six weeks. Temperature variations indicate the microorganism activity during the composting process. The correlation between the temperature and biological reaction rate of composting process was very strong (17). Reducing the temperature after 6 weeks presents a diminution of the biodegradable material. Since small reactors were used for this study, the temperatures set were higher. The maximum and minimum temperatures of composting reactors and ambient air were 28.0°C, 23.0°C, 26.5°C, and 23.0°C (mesophilic temperature), respectively. According to these results (Figures 1 and 2), when the temperature of reactor was reduced less than ambient temperature, the removal efficiency of TPH was very slow. Therefore, the reactor temperature has a considerable effect on the biodegradation of TPH during the composting process. These results were confirmed by other studies (12, 13, 18).

The pH plays an important role in the microbial activity. The pH value in this study, at the initial stages, varied

Table 3. TPH Removal Efficiency During the Composting Period

Time (Week)	Removal Efficiency (%)									
	1:5 Ratio	1:8 Ratio	1:10 Ratio	1:15 Ratio	1:20 Ratio	1:30 Ratio	1:40 Ratio	1:50 Ratio	1:75 Ratio	1:100 Ratio
0	18.1	13.0	8.50	6.80	5.90	10.9	9.00	11.3	7.00	10.3
2	27.0	27.0	9.10	24.6	26.7	23.4	16.5	6.90	6.90	16.9
3	64.4	61.1	55.1	47.2	43.5	40.9	38.3	35.8	33.0	36.4
4	66.0	61.3	52.7	48.5	45.6	40.5	40.2	36.3	36.7	35.8
5	68.8	67.2	61.4	56.5	52.3	49.6	47.7	44.3	43.4	44.0
6	68.9	67.6	59.5	55.0	51.0	49.2	46.5	45.2	43.3	42.8
7	71.8	70.8	62.8	58.7	55.0	50.9	50.7	49.4	49.4	48.5
8	71.6	70.9	63.3	58.3	55.0	50.3	51.2	50.1	48.3	48.7
9	71.5	70.9	62.9	58.2	55.5	50.9	51.6	50.5	49.0	49.2
10	71.6	70.9	63.3	58.3	55.5	51.1	51.5	50.1	49.2	48.5

**Figure 1.** Trend of TPH removal during the composting period**Figure 2.** Temperature profile during the composting for removing TPH

between 6.70 and 7.20 and then dropped (about 5.50) after two weeks. It was due to the decomposition of organic matter and the production of acidic agents such as organic acids and carbon dioxide during the microbial activities in the reactors (17, 19). In addition, after four weeks, the pH value was in the range of 6.50 to 7.00 during the nitrogen

compound mineralization (Figure 3). The significant relationship between temperature, time, and pH and degradation of organic materials was observed.

4.4. Volatilization and Abiotic Degradation

According to the results, the total volatilization loss with and without HgCl_2 during the composting process af-

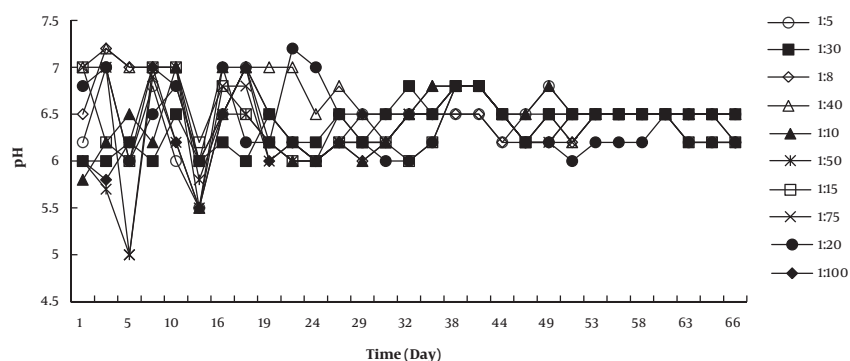


Figure 3. pH profile during the composting for removing TPH

ter 10 weeks were 1.22% and 2.00%, respectively. Thus, the results of this study showed that the roles of abiotic degradation and volatilization were minor (less than 5.00%). The temperature employed in this survey was lower than the temperature which might have significantly impacted on the TPH removal by volatilization (8, 20). Therefore, biodegradation and biological process during the composting process is the main cause of TPH degradation. According to the other studies, microbial activity was the main mechanism of TPH removal in biodegradation of petroleum waste in the composting technology (8, 21).

4.5. Elements Analysis

The results of the analyses of elements for four times after the adjustment periods are shown in Tables 4 and 5. After mixing the OAS with immature compost in 10 ratios, the initial concentrations of the elements decreased so that for concentrations below 10 mg.kg⁻¹ in mixing ratios greater than 1:8, the values changed to µg.kg⁻¹ (Table 5). ANOVA test results showed that the changes in time were not effective on the average concentrations of the elements ($P = 0.99$). Thus, the concentration of metals in the composting process would not be changed. In previous studies, the concentrations of heavy metals had increased with the passage of time (11, 22). The highest and lowest percentages of increased concentrations of metals in the mixing ratios are as follows: Al: 1:30 (36.3%) to 1:10 (3.63%), Fe: 1:50 (20.1%) to 1:8 (0.84%), Zn: 1:20 (23.0%) to 1:75 (0.68%), Cu: 1:75 (13.0%) to 1:15 (0.88%), B: 1:75 (38.3%) to 1:8 (0.66%), Mn: 1:5 (16.8%) to 1:20 (0.85%), Pb: 1:5 (9.11%) to 1:40 (1.48%), Mo: 1:8 (6.06%) to 1:5 (1.34%), Cr: 1:50 (13.1%) to 1:20 (0.72%), Sn: 1:40 (6.54%) to 1:8 (3.16%), Ni: 1:50 (5.80%) to 1:10 (0.93%), Li: 1:75 (5.88%) to 1:5 (1.58%), As: 1:50 (66.1%) to 1:10 (1.75%), Cd: 1:8 (25.0%) to 1:50 (1.94%), V: 1:100 (12.9%) to 1:50 (0.57%), Co: 1:75 (10.8%) to 1:100 (3.60%), and Hg: 1:5 (14.2%) to 1:50 (0.63%), respectively. The statistical analysis showed that the relationship

between concentration of metals (the highest and lowest percentages) were significant (P value < 0.05). Reduction of organic matter was listed as the main reason for the increase in concentrations of metals during composting in previous studies, (11, 22). According to Figure 1 and Table 1, the highest TPH removal efficiency occurred in the ratios of 1:5 (71.6%), 1:8 (70.6%), and 1:10 (63.3%), respectively. The minimum concentrations of elements for the three mentioned ratios were 1:10, 1:8, and 1:5, respectively. The minimum and maximum concentration reduction in the ratio of 1:8 to 1:5, 1.11 (Cd) to 2.04 (Co), the ratio of 1:10 to 1:5, 1.50 (As) to 4.25 (B), and the ratio of 1:10 to 1:8 was equivalent to 0.89 (Co) to 3.38 (B) times, respectively. The statistical analysis showed that the relationship between concentration of metals (the minimum and maximum) were significant (P value < 0.05). Thus, the ratio of 1:10 is the best option for removal of TPH and reduction of elements' concentrations. Previous studies showed that concentrations of zinc were higher than those of copper, the selenium was even lower (23).

5. Conclusion

Based on the results of this study, combination of OAS and composting materials can significantly reduce TPH. In addition, reduction of the TPH (more than 63.0%) and element concentrations was significant at mixing ratio (sludge to compost) of 10:1. Nevertheless, the residual TPH and elements concentrations are higher than existing environmental standards, however, addition of immature compost as an amendment in in-vessel composting could be considered as an effective method for minimization of TPH.

Table 5. Elemental Analysis in Each Reactor with Low Concentration

Time (Week)	Concentration of Elements ($\mu\text{g.kg}^{-1}$)									
	1:5 Ratio	1:8 Ratio	1:10 Ratio	1:15 Ratio	1:20 Ratio	1:30 Ratio	1:40 Ratio	1:50 Ratio	1:75 Ratio	1:100 Ratio
As										
2	2371	2076	1556	1300	735	585	488	196	191	98.3
4	2516	2214	1047	730	597	771	338	247	198	97.3
6	2684	2157	1790	1009	725	864	277	185	184	110
8	2425	2132	1583	1250	857	539	645	326	178	110
Cd										
2	1194	752	675	576	490	336	283	200	156	83.7
4	1665	980	819	698	541	336	276	215	150	79.6
6	1169	1053	753	697	474	398	240	195	146	83.7
8	1257	941	738	619	583	332	258	204	155	86.6
V										
2	2760	1765	1178	951	579	487	305	236	168	97.5
4	2735	1842	1155	944	568	482	295	243	171	104
6	2617	1904	1231	959	580	487	292	231	175	114
8	2784	1771	1170	990	589	457	321	237	180	110
Co										
2	1362	957	721	605	482	350	234	171	90.8	61.9
4	1565	924	649	564	413	277	221	181	89.9	60.1
6	1431	703	789	344	378	330	228	194	94.0	63.4
8	1449	909	672	513	472	324	226	169	101	64.1
Hg										
2	1116	667	470	393	284	161	125	91.9	65.3	46.0
4	1229	636	384	391	300	164	131	90.8	76.8	47.5
6	1160	618	440	379	267	148	130	92.9	70.3	46.5
8	1275	700	475	403	286	172	127	92.5	68.2	46.1

Acknowledgments

This research was part of a Ph.D. dissertation and has been financially supported by a grant (project No.: 94-04-46-28699) from Center for Solid Waste Research, Institute for Environmental Research, Tehran University of Medical Sciences, Tehran, Iran. The authors would like to thank the Department of Environmental Health Engineering, School of Public Health, Tehran University of Medical Sciences for their collaborations.

Footnote

Authors' Contribution: Kamyar Yaghmaeian engaged in the intellectual helping in various stages of the study. Kamyar Yaghmaeian, Ramin Nabizadeh and Ali Reza Asgari

have taken part in all stages of the study (design and conduct of the study, collecting and analyzing of data). Amir Hossein Mahvi, Shahrokh Nazmara and Mohammad Hadi Dehghani participated in data interpretation and analysis and manuscript preparation. Ali Reza Asgari carried out technical analysis and manuscript preparation.

References

1. Haroun M, Idris A, Omar S. Analysis of heavy metals during composting of the tannery sludge using physicochemical and spectroscopic techniques. *J Hazard Mater.* 2009;**165**(1-3):111-9. doi: [10.1016/j.jhazmat.2008.09.092](https://doi.org/10.1016/j.jhazmat.2008.09.092). [PubMed: 18990495].
2. Hossaini H, Fatehizadeh A, Yousefi N, Reshadat S, Gilan NR, Ghasemi S, et al. Application of enhanced softening process in slaughterhouse wastewater treatment. *NISCAIR-CSIR.* 2013;**20**(3):217-21.
3. Ahmadian M, Reshadat S, Yousefi N, Mirhossieni SH, Zare MR, Ghasemi SR, et al. Municipal leachate treatment by Fenton process: Effect of

- some variable and kinetics. *J Environ Public Health*. 2013;**2013**:169682. doi: [10.1155/2013/169682](https://doi.org/10.1155/2013/169682). [PubMed: [23840229](https://pubmed.ncbi.nlm.nih.gov/23840229/)]. [PubMed Central: [PMC3690258](https://pubmed.ncbi.nlm.nih.gov/PMC3690258/)].
4. Asgari AR, Vaezi F, Nasser S, Dördelmann O, Mahvi AH, Dehghani Fard E. Removal of hexavalent chromium from drinking water by granular ferric hydroxide. *Iran J Env Health, Sci Engin*. 2008;**5**(4):277-82.
 5. Ahmadi M, Teymouri P, Setodeh A, Mortazavi MS, Asgari AR. Adsorption of Pb (II) from aqueous solution onto lewattit Fo36 nano resin: Equilibrium and kinetic studies. *Env Engin Manage J*. 2011;**10**(10):1579-87. doi: [10.30638/eemj.2011.219](https://doi.org/10.30638/eemj.2011.219).
 6. Ahmadian M, Malakootian M, Yousefi N, Fatehizadeh A, Ginkel SWV, Ghorbani M, et al. Nickel (II) removal from industrial plating effluent by fenton process. *Env Engine Manage J*. 2015;**14**(4):837-42. doi: [10.30638/eemj.2015.093](https://doi.org/10.30638/eemj.2015.093).
 7. Jonidi Jafari A, Hassanpour M, Farzadkia M. Economic evaluation of recycling acidic sludge project of reprocessing industries to bitumen (A case study). *Env Tech Innov*. 2016;**5**:30-40. doi: [10.1016/j.eti.2015.11.004](https://doi.org/10.1016/j.eti.2015.11.004).
 8. Koolivand A, Naddafi K, Nabizadeh R, Nasser S, Jonidi Jafari A, Yunesian M, et al. Degradation of petroleum hydrocarbons from bottom sludge of crude oil storage tanks using in-vessel composting followed by oxidation with hydrogen peroxide and Fenton. *J Mater Cycles Waste Manage*. 2013;**15**(3):321-7. doi: [10.1007/s10163-013-0121-1](https://doi.org/10.1007/s10163-013-0121-1).
 9. Asgari AR, Nabizadeh R, Mahvi AH, Nasser S, Dehghani MH, Nazmara S, et al. Biodegradation of total petroleum hydrocarbons from acidic sludge produced by re-refinery industries of waste oil using in-vessel composting. *J Env Health Sci Engine*. 2017;**15**(3). doi: [10.1186/s40201-017-0267-1](https://doi.org/10.1186/s40201-017-0267-1).
 10. Hu G, Li J, Zeng G. Recent development in the treatment of oily sludge from petroleum industry: A review. *J Hazard Mater*. 2013;**261**:470-90. doi: [10.1016/j.jhazmat.2013.07.069](https://doi.org/10.1016/j.jhazmat.2013.07.069). [PubMed: [23978722](https://pubmed.ncbi.nlm.nih.gov/23978722/)].
 11. Kim JD, Park JS, In BH, Kim D, Namkoong W. Evaluation of pilot-scale in-vessel composting for food waste treatment. *J Hazard Mater*. 2008;**154**(1-3):272-7. doi: [10.1016/j.jhazmat.2007.10.023](https://doi.org/10.1016/j.jhazmat.2007.10.023). [PubMed: [18023532](https://pubmed.ncbi.nlm.nih.gov/18023532/)].
 12. Antizar-Ladislao B, Lopez-Real J, Beck AJ. Degradation of polycyclic aromatic hydrocarbons (PAHs) in an aged coal tar contaminated soil under in-vessel composting conditions. *Environ Pollut*. 2006;**141**(3):459-68. doi: [10.1016/j.envpol.2005.08.066](https://doi.org/10.1016/j.envpol.2005.08.066). [PubMed: [16246473](https://pubmed.ncbi.nlm.nih.gov/16246473/)].
 13. Koolivand A, Naddafi K, Nabizadeh R, Nasser S, Jonidi Jafari A, Yunesian M, et al. Biodegradation of petroleum hydrocarbons of bottom sludge from crude oil storage tanks by in-vessel composting. *Toxicol env chem*. 2013;**95**(1):101-9. doi: [10.1080/02772248.2012.753073](https://doi.org/10.1080/02772248.2012.753073).
 14. Brewer LJ, Sullivan DM. Maturity and stability evaluation of composted yard trimmings. *Compost Sci Utiliz*. 2003;**11**(2):96-112. doi: [10.1080/1065657x.2003.10702117](https://doi.org/10.1080/1065657x.2003.10702117).
 15. Hseu ZY. Evaluating heavy metal contents in nine composts using four digestion methods. *Bioresour Technol*. 2004;**95**(1):53-9. doi: [10.1016/j.biortech.2004.02.008](https://doi.org/10.1016/j.biortech.2004.02.008). [PubMed: [15207295](https://pubmed.ncbi.nlm.nih.gov/15207295/)].
 16. Thomas J, Ward C, Raymond R, Wilson J, Loehr R. Bioremediation. *Encyclopedia of Microbiology*. 1992. p. 369-85.
 17. Zhang L, Sun X. Influence of bulking agents on physical, chemical, and microbiological properties during the two-stage composting of green waste. *Waste Manag*. 2016;**48**:115-26. doi: [10.1016/j.wasman.2015.11.032](https://doi.org/10.1016/j.wasman.2015.11.032). [PubMed: [26644164](https://pubmed.ncbi.nlm.nih.gov/26644164/)].
 18. Coulon F, Pelletier E, Gourhant L, Delille D. Effects of nutrient and temperature on degradation of petroleum hydrocarbons in contaminated sub-Antarctic soil. *Chemosphere*. 2005;**58**(10):1439-48. doi: [10.1016/j.chemosphere.2004.10.007](https://doi.org/10.1016/j.chemosphere.2004.10.007). [PubMed: [15686763](https://pubmed.ncbi.nlm.nih.gov/15686763/)].
 19. Li Y, Li W. Nitrogen transformations and losses during composting of sewage sludge with acidified sawdust in a laboratory reactor. *Waste Manag Res*. 2015;**33**(2):139-45. doi: [10.1177/0734242X14564642](https://doi.org/10.1177/0734242X14564642). [PubMed: [25649403](https://pubmed.ncbi.nlm.nih.gov/25649403/)].
 20. Loehr RC, Smith JR, Corsi RL. VOC and SVOC emissions from slurry and solid phase bioremediation processes. *Pract Period Hazard Toxic Radioactive Waste Manage*. 2001;**5**(4):211-24. doi: [10.1061/\(asce\)1090-025x\(2001\)5:4\(211\)](https://doi.org/10.1061/(asce)1090-025x(2001)5:4(211)).
 21. Nam K, Rodriguez W, Kukor JJ. Enhanced degradation of polycyclic aromatic hydrocarbons by biodegradation combined with a modified Fenton reaction. *Chemosphere*. 2001;**45**(1):11-20. doi: [10.1016/s0045-6535\(01\)00051-0](https://doi.org/10.1016/s0045-6535(01)00051-0).
 22. Hsu JH, Lo SL. Effect of composting on characterization and leaching of copper, manganese, and zinc from swine manure. *Env Pollut*. 2001;**114**(1):119-27. doi: [10.1016/s0269-7491\(00\)00198-6](https://doi.org/10.1016/s0269-7491(00)00198-6).
 23. Comas J, Dominguez C, Salas-Vazquez DI, Parera J, Diez S, Bayona JM. Input and leaching potential of copper, zinc, and selenium in agricultural soil from swine slurry. *Arch Environ Contam Toxicol*. 2014;**66**(2):277-86. doi: [10.1007/s00244-013-9982-5](https://doi.org/10.1007/s00244-013-9982-5). [PubMed: [24374934](https://pubmed.ncbi.nlm.nih.gov/24374934/)].

Table 4. Elemental Analysis in Each Reactor with High Concentration

Time (Week)	Concentration of Elements (mg.kg ⁻¹)									
	1:5 Ratio	1:8 Ratio	1:10 Ratio	1:15 Ratio	1:20 Ratio	1:30 Ratio	1:40 Ratio	1:50 Ratio	1:75 Ratio	1:100 Ratio
Al										
2	1149	655	468	227	200	165	141	104	88.0	53.0
4	1053	783	457	204	203	202	163	112	93.0	60.0
6	1096	702	425	211	182	248	169	94	101	59.0
8	1071	882	485	292	221	225	166	119	105	56.0
Fe										
2	1792	1097	811	658	451	352	252	152	134	85.1
4	1836	963	836	583	473	334	247	146	130	88.2
6	1955	1147	838	655	474	345	217	167	119	82.1
8	1899	1106	888	607	470	338	247	182	130	89.0
Zn										
2	1737	1146	817	573	375	291	195	148	111	65.6
4	1771	1102	857	510	437	266	199	135	98.9	60.7
6	1513	1170	789	555	418	301	194	132	108	56.8
8	1685	1172	880	593	462	296	198	141	112	62.6
Cu										
2	1559	990	642	558	364	267	184	156	121	68.0
4	1401	742	660	515	402	297	177	153	104	59.2
6	1400	924	605	523	384	311	195	146	141	75.9
8	1544	943	675	553	395	296	194	161	137	68.8
B										
2	563	453	181	183	123	70.7	70.6	34.8	27.2	21.4
4	663	418	216	184	94.5	95.2	79.4	49.0	28.4	25.3
6	507	403	119	161	67.2	82.8	73.8	22.6	32.8	27.4
8	600	456	245	191	128.5	80.6	85.5	41.1	37.6	27.9
Mn										
2	122	72.5	51.5	41.8	27.1	21.8	14.4	10.1	8.50	6.31
4	132	72.0	52.3	38.7	22.8	22.8	13.1	9.66	9.00	5.63
6	120	73.1	53.8	43.9	25.2	22.4	14.9	9.79	8.72	5.70
8	143	73.1	53.2	43.2	27.3	22.3	14.1	10.2	8.59	6.43
Pb										
2	61.3	39.1	27.3	22.8	14.2	10.1	6.74	5.34	3.86	2.40
4	58.7	42.7	26.1	21.9	13.3	10.4	6.29	5.51	3.55	2.36
6	60.7	36.4	27.0	19.7	15.1	8.15	6.22	5.70	4.08	2.39
8	66.9	39.7	28.3	23.6	13.8	10.5	6.84	5.52	3.67	2.22
Mo										
2	97.9	61.8	44.2	34.4	23.3	16.1	10.6	7.87	5.46	2.59
4	82.8	69.0	41.4	29.7	22.1	14.7	10.9	8.58	5.30	2.82

6	96.4	73.2	40.6	32.2	22.3	14.0	10.2	7.72	6.16	2.76
8	99.2	65.6	42.2	34.9	22.1	16.8	10	7.64	5.73	2.47
Cr										
2	28.7	17.5	13.7	10.1	6.88	5.95	3.93	2.36	1.64	1.05
4	24.4	20.7	11.3	10.0	6.51	5.83	3.92	2.63	1.40	1.02
6	29.6	19.6	12.1	10.3	6.41	5.42	3.98	2.48	1.65	1.02
8	28.2	18.8	13.5	10.5	6.93	6.05	3.99	2.67	1.62	1.11
Sn										
2	17.8	11.7	7.34	6.26	4.30	3.43	2.14	1.66	1.27	0.71
4	16.7	12.0	7.29	6.65	4.39	3.28	2.37	1.57	1.21	0.66
6	18.7	12.1	7.43	6.74	4.10	3.54	2.42	1.72	1.20	0.68
8	18.5	12.1	7.67	6.54	4.51	3.12	2.28	1.73	1.32	0.70
Ni										
2	16.8	11.3	7.48	6.07	4.09	3.08	1.99	1.55	1.16	0.68
4	17.4	11.3	6.89	5.80	3.99	2.94	1.88	1.44	1.08	0.65
6	17.73	11.2	6.61	5.92	4.07	2.90	1.80	1.52	1.19	0.62
8	16.31	11.3	7.55	6.19	4.18	3.05	1.90	1.64	1.19	0.66
Li										
2	13.85	8.96	5.86	5.10	3.42	2.67	1.71	1.19	1.02	0.75
4	13.63	9.94	5.94	5.21	3.94	2.66	1.56	1.11	0.93	0.69
6	13.06	9.22	6.00	4.94	3.78	3.05	1.79	1.15	0.98	0.78
8	14.07	9.41	6.19	5.03	3.57	2.73	1.81	1.17	1.08	0.69