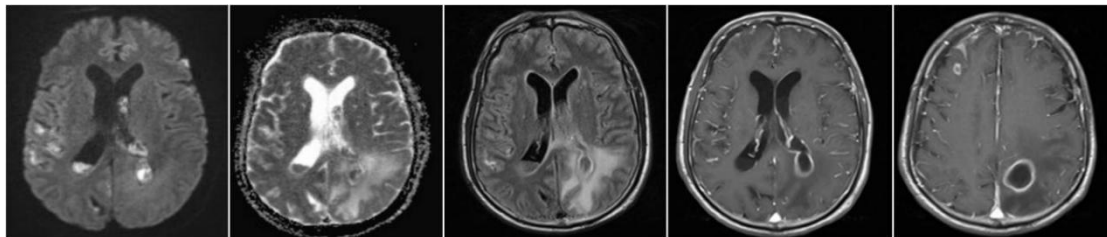


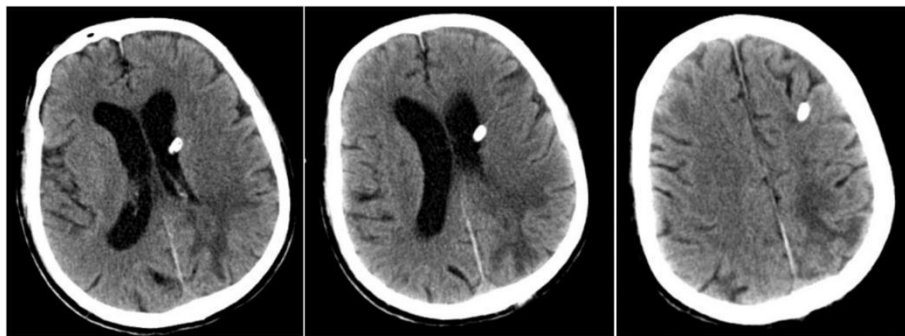


Supplementary Figure 1 Clinical oral examination reveals poor dental hygiene with characteristic pathological findings:

- a)Gross morphology:Generalized tooth surface pigmentation,Multiple carious lesions,Residual roots.
- b)Chronic periodontitis features:Clinical attachment loss ≥ 3 mm;Generalized gingival inflammation (Modified Gingival Index ≥ 2)



Supplementary Figure 2 Follow-up MRI,The lesion now exhibits more regular margins compared to prior imaging, with slight changes in morphology and prominent ring enhancement. The inferior aspect of the abscess communicates with the left posterior horn of the lateral ventricle, indicating rupture into the ventricular system.



Supplementary Figure 3 Postoperative changes in the left parietal lobe abscess on follow-up cranial CT (December 30).