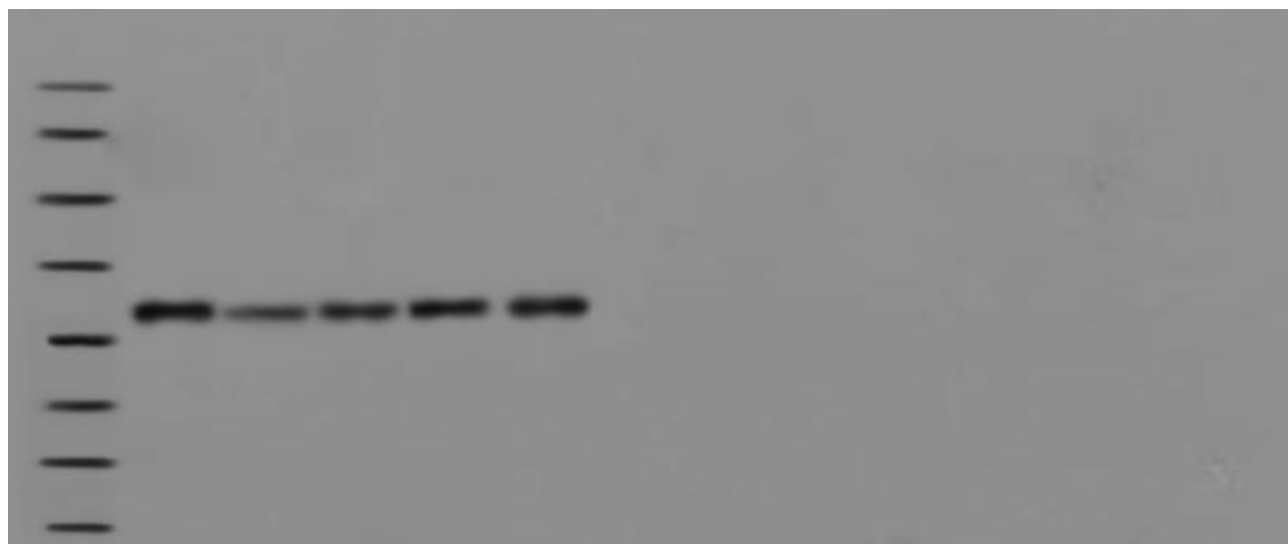
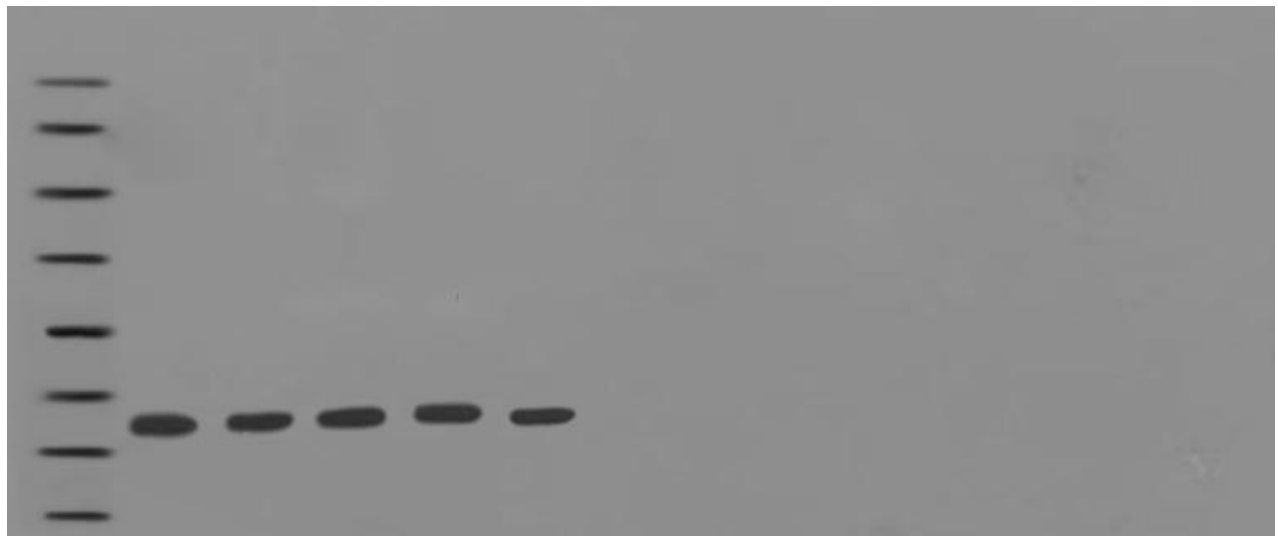




**Supplementary Fig. S1.** Full-length, uncropped Western blot image of SREBP-1c corresponding to the results shown in Fig. 6. All sample lanes and molecular weight markers are included to demonstrate that no cropping, splicing, or digital modifications were performed.



**Supplementary Fig. S2.** Full-length, uncropped Western blot image of PPAR $\alpha$  corresponding to Fig. 6. The complete blot is provided, including all sample lanes and molecular weight markers, ensuring full transparency of the protein expression data.



**Supplementary Fig. S3.** Full-length, uncropped Western blot image of GAPDH used as the loading control for Fig. 6. The complete presentation of all lanes and markers confirms uniform protein loading across samples and validates the normalization procedures.